


Refuge County Forest Road # 12, Crow Wing County, Minnesota

| PARCEL # | RE CODE | FEENAME | SECTION | TOWNSHIP | RANGE | LEGAL DESCRIPTION |
|-----------|-----------------|------------------------------|---------|----------|-------|-------------------|
| PARCEL 1 | 600172300000009 | TAX FORFEITED | 17 | 137 | 26 | SW1/4 OF NW1/4 |
| PARCEL 2 | 600172200000009 | TAX FORFEITED | 17 | 137 | 26 | NW1/4 OF NW1/4 |
| PARCEL 3 | 600181100000009 | TAX FORFEITED | 18 | 137 | 26 | NE1/4 OF NE1/4 |
| PARCEL 4 | 600074400000009 | TAX FORFEITED | 7 | 137 | 26 | SE1/4 OF SE1/4 |
| PARCEL 5 | 600074100000009 | POTLATCH FOREST HOLDINGS INC | 7 | 137 | 26 | NE1/4 OF SE1/4 |
| PARCEL 6 | 600071400000009 | TAX FORFEITED | 7 | 137 | 26 | SE1/4 OF NE1/4 |
| PARCEL 7 | 600071100000009 | TAX FORFEITED | 7 | 137 | 26 | NE1/4 OF NE1/4 |
| PARCEL 8 | 600082300000009 | TAX FORFEITED | 8 | 137 | 26 | SW1/4 OF NW1/4 |
| PARCEL 9 | 600083200000009 | TAX FORFEITED | 8 | 137 | 26 | NW1/4 OF SW1/4 |
| PARCEL 10 | 600083100000009 | POTLATCH FOREST HOLDINGS INC | 8 | 137 | 26 | NE1/4 OF SW1/4 |
| PARCEL 11 | 600084200000009 | POTLATCH FOREST HOLDINGS INC | 8 | 137 | 26 | NW1/4 OF SE1/4 |
| PARCEL 12 | 600081300000009 | POTLATCH FOREST HOLDINGS INC | 8 | 137 | 26 | SW1/4 OF NE1/4 |
| PARCEL 13 | 600081400000009 | POTLATCH FOREST HOLDINGS INC | 8 | 137 | 26 | SE1/4 OF NE1/4 |
| PARCEL 14 | 600092300000009 | TAX FORFEITED | 9 | 137 | 26 | SW1/4 OF NW1/4 |

May 7, 2008
DATE OF PUBLIC HEARING


RACHEL REABE NYSTROM, CHAIR
BOARD OF COUNTY COMMISSIONERS
CROW WING COUNTY, MINNESOTA

ATTEST:

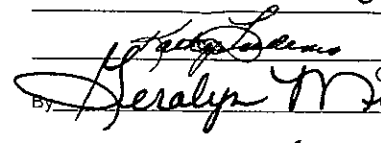

DEBORAH A. ERICKSON, COUNTY AUDITOR
CROW WING COUNTY, MINNESOTA

Adopted at Brainerd, Minnesota, this 10th day of June, 2008

COUNTY RECORDING SPACE BELOW

Office of County Recorder
County of Crow Wing, MN

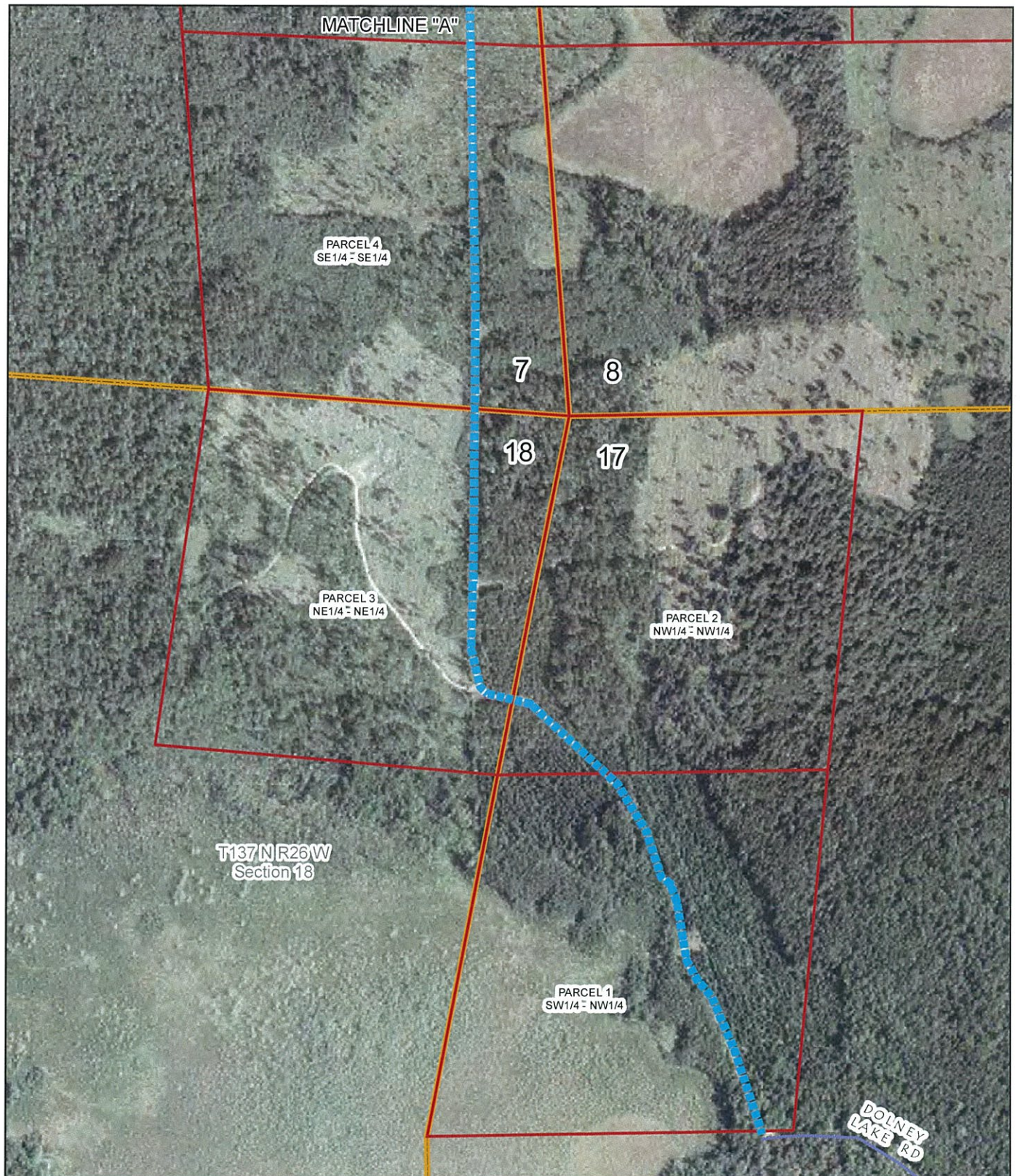
I hereby certify that the within instrument was filed
in this office for record on the 15 day of July
A.D. 2008 at 3 o'clock P.M.
and was duly recorded as Doc. No. 0750726


County Recorder
Deputy
1 of 3

RETURN TO

Rand Sept.

Refuge County Forest Road #12, Crow Wing County , Minnesota



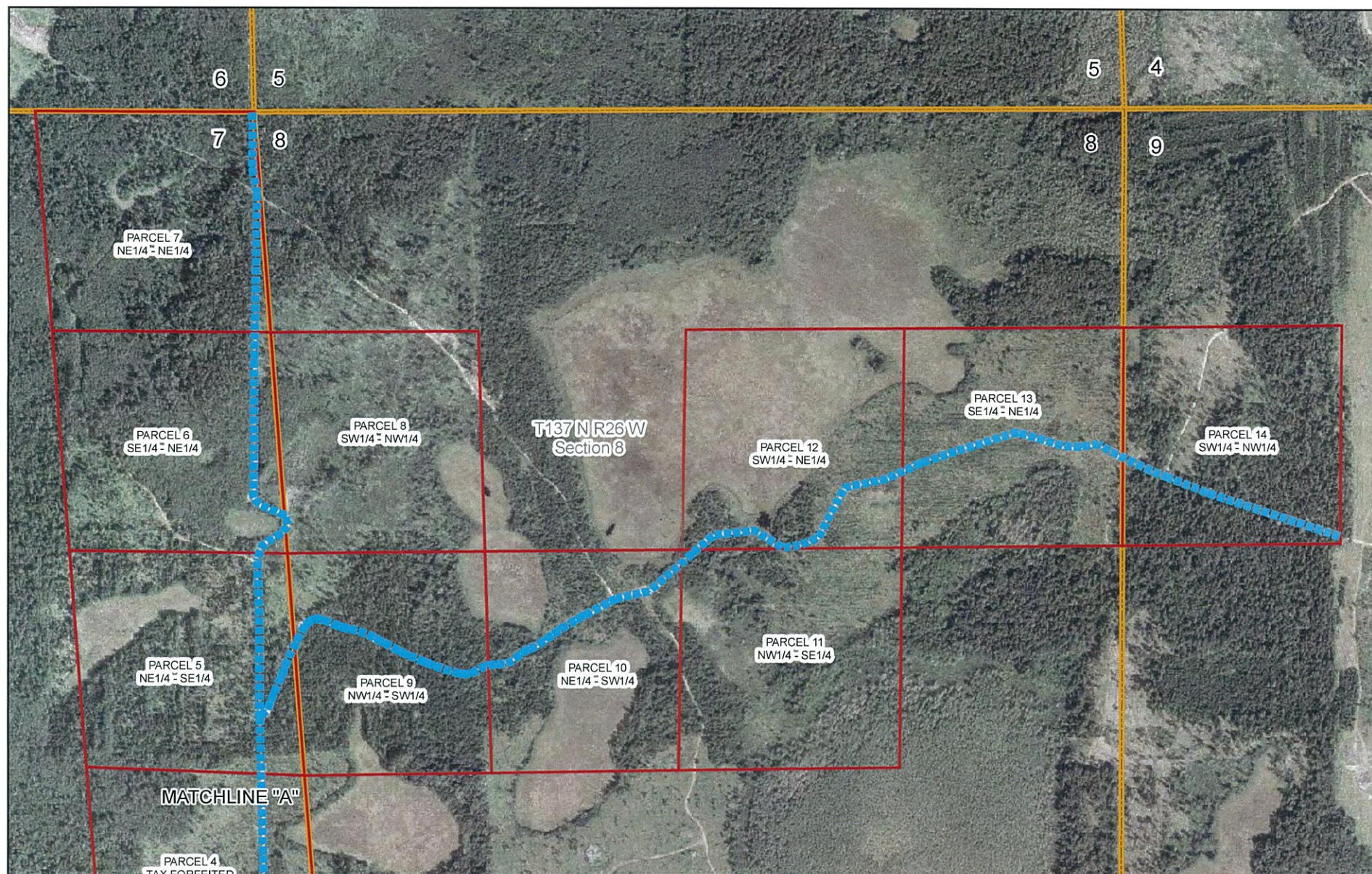
1 inch equals 487 feet



----- Refuge County Forest Rd

MS 89.715 states "the roads to be recorded will be to the width of the actual use including ditches, backslopes, fills, and maintained rights-of-ways". County Forest Roads are variable in width and the map symbol representing the County Forest Roads is intended to represent the location of those County Forest Roads, not the actual width.

Refuge County Forest Road #12, Crow Wing County , Minnesota



1 inch equals 811 feet



MS 89.715 states "the roads to be recorded will be to the width of the actual use including ditches, backslopes, fills, and maintained rights-of-ways". County Forest Roads are variable in width and the map symbol representing the County Forest Roads is intended to represent the location of those County Forest Roads, not the actual width.

--- Refuge County Forest Rd