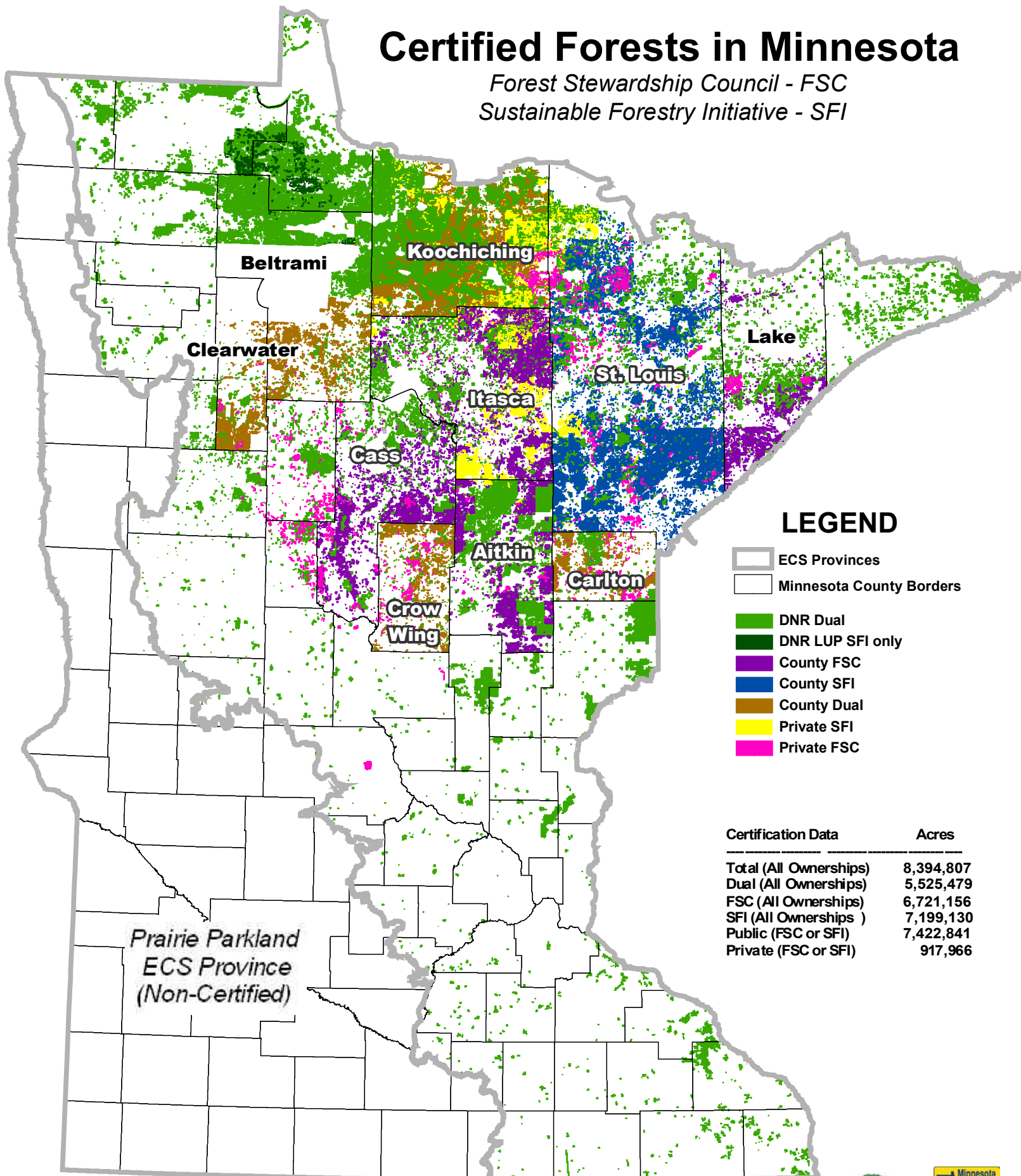


Certified Forests in Minnesota

Forest Stewardship Council - FSC
Sustainable Forestry Initiative - SFI



LEGEND

- ECS Provinces
- Minnesota County Borders
- DNR Dual
- DNR LUP SFI only
- County FSC
- County SFI
- County Dual
- Private SFI
- Private FSC

Certification Data	Acres
Total (All Ownerships)	8,394,807
Dual (All Ownerships)	5,525,479
FSC (All Ownerships)	6,721,156
SFI (All Ownerships)	7,199,130
Public (FSC or SFI)	7,422,841
Private (FSC or SFI)	917,966

Prairie Parkland
ECS Province
(Non-Certified)

215,976 certified acres in the American Tree Farm System
are not shown due to concerns regarding privacy rights.

Date: Revised 2016
Contact: Rebecca Barnard, MnDNR Forestry
651-259-5256

www.dnr.state.mn.us/forestry/certification/index.html



Forest Management Certificates in Minnesota

Total Certified Acres

Total (<i>All ownerships</i>)	8,394,807 acres
Public (<i>FSC or SFI</i>)	7,422,841 acres
Private (<i>FSC/SFI/PEFC</i>)*	917,966 acres
Dual (<i>All ownerships</i>)	5,525,479 acres

FSC Certified Acres

All Ownerships	6,721,156 acres
Public: DNR	4,825,839 acres**
Public: County	1,627,667 acres
Private: Industry	252,217 acres
Private: Non-Industry	15,433 acres

SFI Certified Acres

All Ownerships	7,199,130 acres
Public: DNR	4,900,000 acres**
Public: County	1,594,814 acres
Private: Industry	488,340 acres
Private: Non-Industry	215,976 acres

FSC Certificates

Public

Minnesota DNR	4,825,839 acres**
MCSFC***	699,640 acres
Aitkin County Land Dept.	221,657 acres
Cass County Land Dept.	253,494 acres
Lake County Land Dept.	151,216 acres
Itasca County	301,660 acres

Private

Aitkin County SWCD	2,689 acres
C. Forestry Resource Center	2,400 acres
Potlatch Forest Holdings	252,217 acres
St. John's Abbey	1,484 acres
The Nature Conservancy (TNC)	8,860 acres

SFI/PEFC Certificates

Public

Minnesota DNR	4,900,000 acres
MCSFC***	699,640 acres
St. Louis County Land Dept.	895,174 acres

Private

Forest Capital Partners	298,955 acres
UPM-Kymmene	189,385 acres
MN Tree Farmers (<i>PEFC</i>)****	215,976 acres

Dual (FSC & SFI) Certificates

Minnesota DNR (<i>2005-present</i>)	4,825,839 acres
MCSFC*** (<i>2009-present</i>)	699,640 acres
<i>Beltrami County</i>	<i>147,000 acres</i>
<i>Carlton County</i>	<i>73,000 acres</i>
<i>Clearwater County</i>	<i>90,140 acres</i>
<i>Crow Wing County</i>	<i>103,000 acres</i>
<i>Koochiching County</i>	<i>286,500 acres</i>

* Forest Stewardship Council (FSC); Sustainable Forestry Initiative (SFI); Programme for the Endorsement of Forest Certification schemes (PEFC)

** DNR manages 81,481 acres of USFWS-owned Land Utilization Project (LUP) lands which are SFI Certified only.

*** The Minnesota Counties Sustainable Forest Cooperative (MCSFC), is a group certificate including the 5 counties listed above. MCSFC was awarded its SFI certificate in 2008 and its FSC certificate on November 1, 2009.

**** The American Tree Farm System (ATFS) was awarded PEFC recognition on August 7, 2008. There are 1,687 Certified Tree Farmers in MN with a total of 215,976 acres. Due to privacy rights, there is no geo-spatial data available for this acreage. ATFS fiber is recognized by and tracked through the SFI Chain-of-Custody system. Please contact Tom Witkowski @ tomforester@charter.net for more info.

Data Sources: Data primarily obtained directly from certificate holders. Total acres may not correspond to those listed on the FSC-US & Metafore.org websites. In some cases, total acres include both productive & non-productive forestland, as well as non-forested acres.