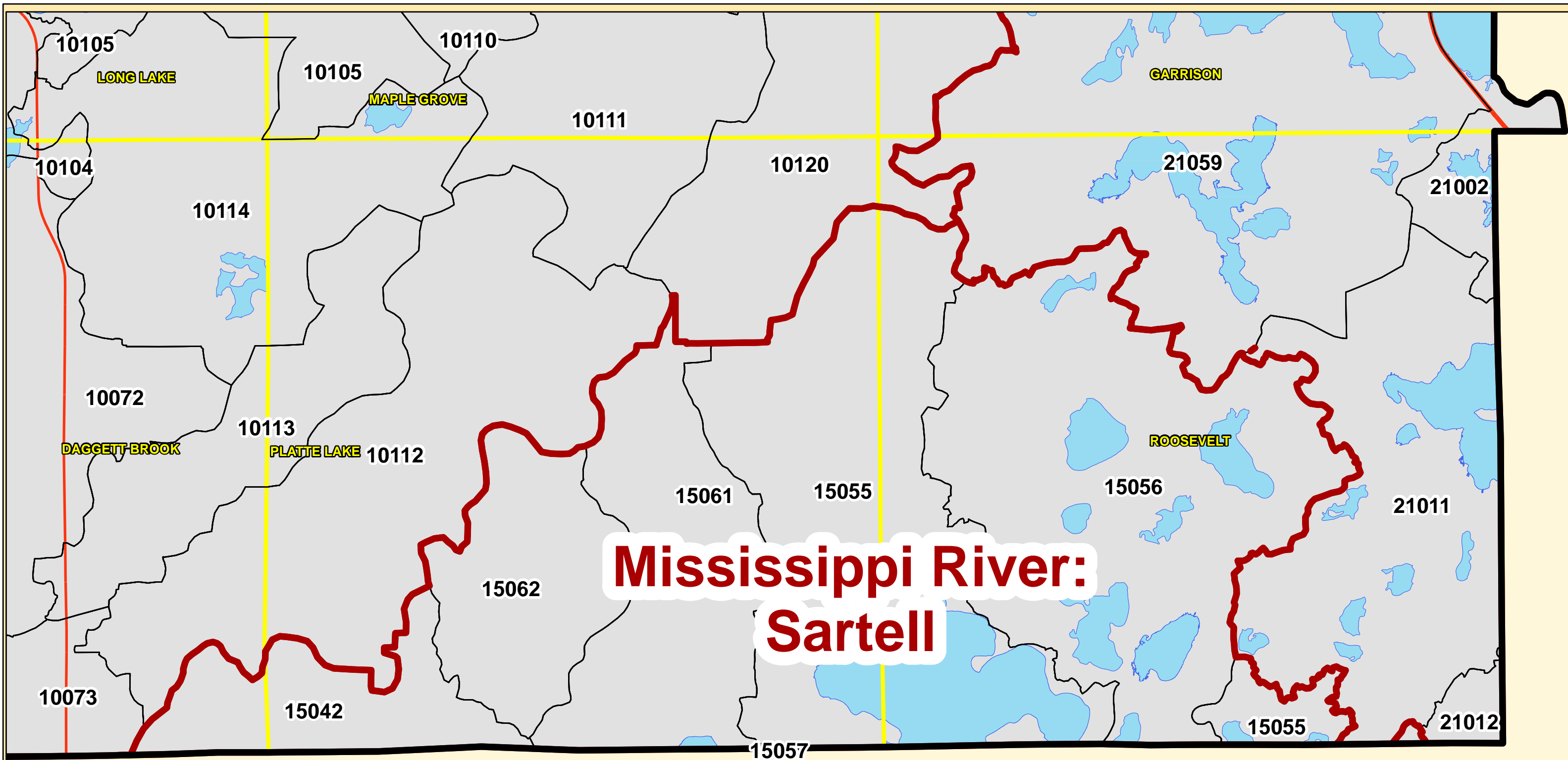




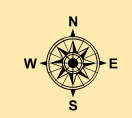
Mississippi River – Sartell (6 minor watersheds):

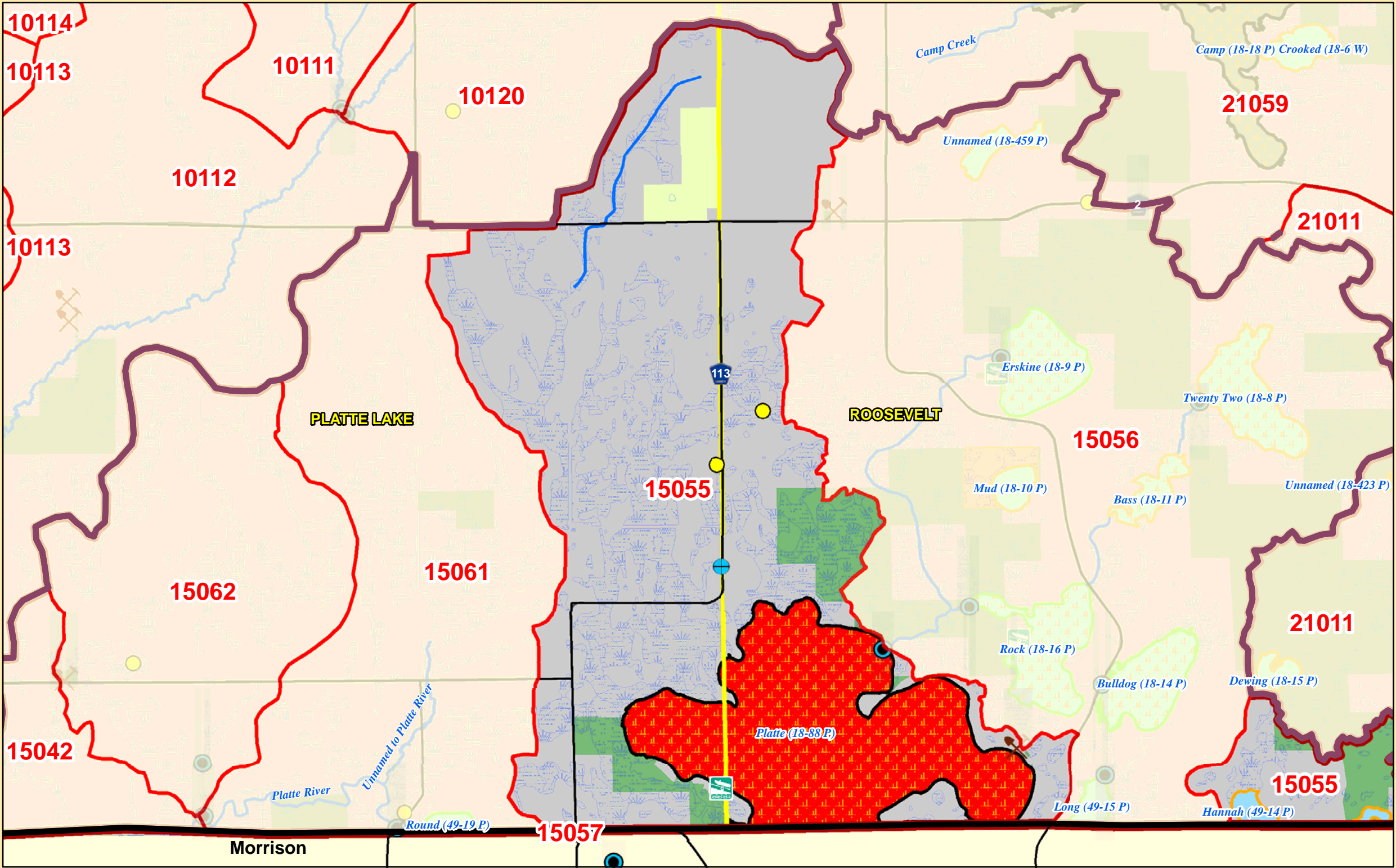
15042 Platte R
15055 Platte L
15056 Unknown DNR Minor Watershed Name
15057 Sullivan L
15061 Platte R
15062 Unknown DNR Minor Watershed Name



Mississippi River: Sartell

- Major Watersheds
- Minor Watersheds
- Cities / Townships
- U.S. Highways
- State Highways
- Lakes
- Mississippi River





Minor Watershed #	15055
Major Watershed Name	Mississippi River - Sartell
Area (sq. miles)	12
Population 2010 (persons per sq. mile)	16
Population Change 2000 to 2010 (persons per sq. mile)	0
Surficial Geology	Till, drumlinized / Outwash (sand & gravel)
% Slope (avg.)	3
% Forested (private)	26
% Disturbed Land Cover	31
% Developed	3
Extractive Uses	Minimal
# of Animal Units	128
Biological Diversity	Minimal
% Public Land	13
% Easements	2
% Lakes	19
% Streams	0
% Wetlands (private)	22
% Protected	56
Assigned Risk Level	Enhance
Implementation Priorities	
Top 24 Priority Watershed	
Surface Water	
Aquatic Invasive Species	
Stormwater	x
Shoreline Buffers	x
Lake Focus: Recreational Use & Development	x
Lake Focus: Wild Rice / Wildlife	x
Rivers / Floodplains	
Agricultural BMPs	x
Ecological Sensitive Areas	
Bluffs & Steep Slopes	
Public & Private Drainage	x
Development (existing and potential)	
Private Forest Stewardship	
Ground Water	
Septic Systems	x
Wellhead Protection	

- W

Public Waterworks
- ★

Water Use: Air Conditioning
- Water Use: Industrial Processing
- Irrigation: Crop
- Irrigation: Non Crop
- ◆

Water Use: Special Categories
- Wellhead Protection Areas
- Drinking Water Source Protection Areas

- Feedlots (by primary animal)
- BIRDS
- BOVINES
- HORSES
- PIGS
- Water Access Sites
- Active Gravel Pits

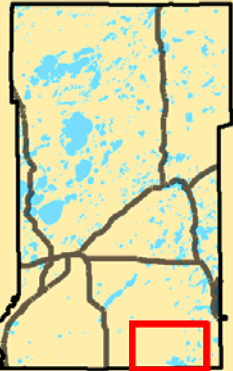
- U.S. Highways
- State Highways
- County Roads
- Paul Bunyan State Trail
- Cities / Townships
- Mississippi River
- Streams
- County Ditches
- Wetlands (from NWI)

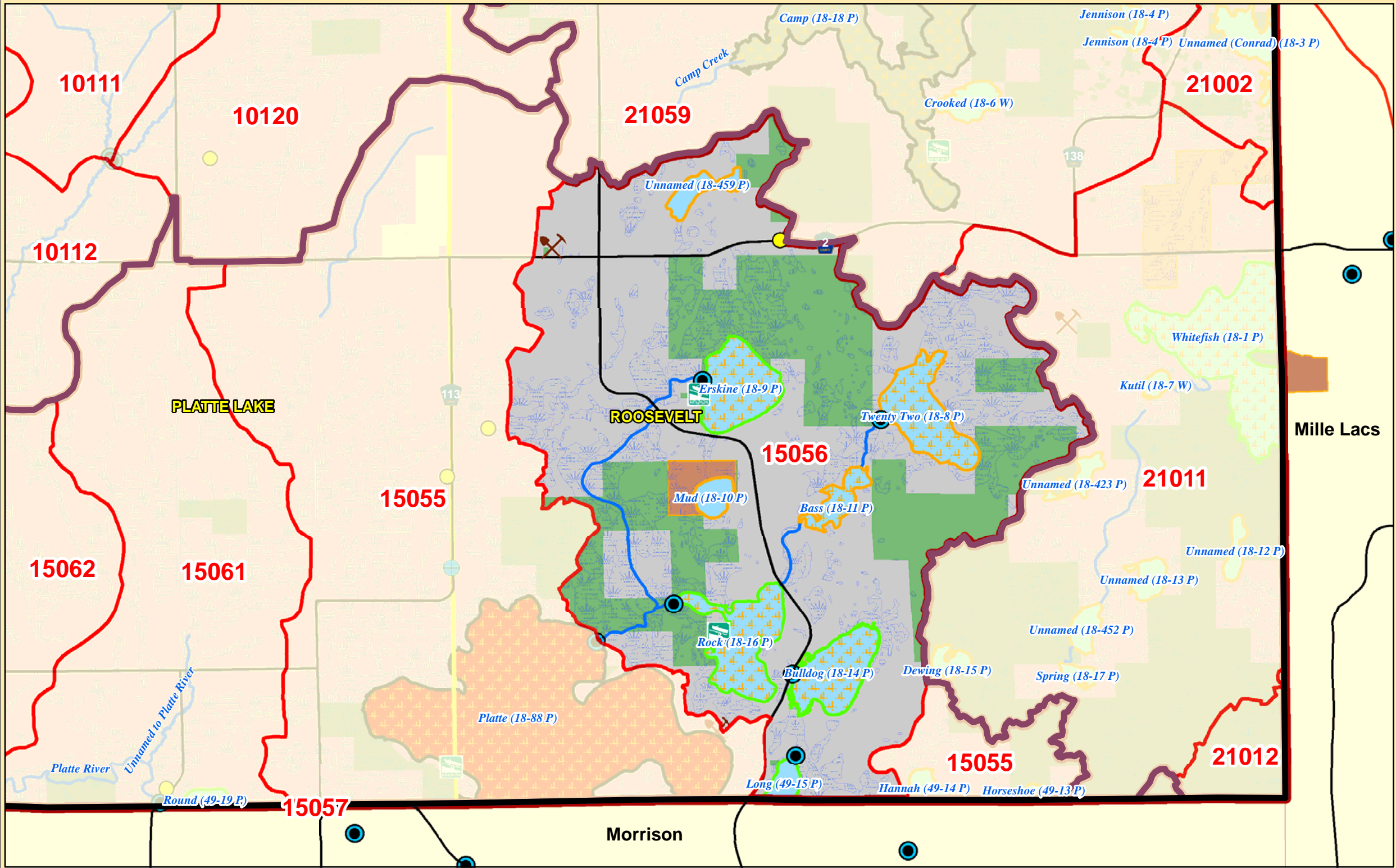
- Trout, Rice, and Cisco Lakes
- Cisco
- Cisco and Wild Rice
- Cisco and Trout
- Wild Rice
- Trout
- Infested Lakes
- Milfoil
- Milfoil, Zebra Mussels
- Zebra Mussels
- Milfoil, Zebra Mussels, Spiny Water Flea

- Lakes (Classification & Water Quality Status)
- General Development (GD)
- Recreational Development (RD)
- Natural Environment (NE)
- Natural Environment-Special Shallow (NE-SS)
- Impaired: Nutrients
- Improving
- Declining
- No Trend
- No Trend / Declining
- Multiple Trends
- Not Assessed

- State Park
- State Recreation Area
- Scientific and Natural Area Boundaries
- Wildlife Management Areas
- Conservation Easements
- Public Land
- 30 Lakes Watershed District
- Outlets of watersheds / catchments

- Minor Watersheds
- Major Watersheds
- 00.751.5Miles





Minor Watershed #	15056
Major Watershed Name	Mississippi River - Sartell
Area (sq. miles)	12
Population 2010 (persons per sq. mile)	13
Population Change 2000 to 2010 (persons per sq. mile)	-1
Surficial Geology	Glacial Till
% Slope (avg.)	11
% Forested (private)	29
% Disturbed Land Cover	14
% Developed	3
Extractive Uses	Minimal
# of Animal Units	15
Biological Diversity	Outstanding
% Public Land	30
% Easements	0
% Lakes	12
% Streams	0
% Wetlands (private)	17
% Protected	60
Assigned Risk Level	Protection
Implementation Priorities	
Top 24 Priority Watershed	
Surface Water	
Aquatic Invasive Species	
Stormwater	x
Shoreline Buffers	x
Lake Focus: Recreational Use & Development	x
Lake Focus: Wild Rice / Wildlife	x
Rivers / Floodplains	
Agricultural BMPs	
Ecological Sensitive Areas	x
Bluffs & Steep Slopes	
Public & Private Drainage	
Development (existing and potential)	
Private Forest Stewardship	
Ground Water	
Septic Systems	x
Wellhead Protection	

- W

Public Waterworks
- ★

Water Use: Air Conditioning
- Water Use: Industrial Processing
- Irrigation: Crop
- Irrigation: Non Crop
- ◆

Water Use: Special Categories
- Wellhead Protection Areas
- Drinking Water Source Protection Areas

- Feedlots (by primary animal)

● BIRDS

● BOVINES

● HORSES

● PIGS

■

Water Access Sites

■

Active Gravel Pits

- U.S. Highways

State Highways

County Roads

Paul Bunyan State Trail

Cities / Townships

Mississippi River

Streams

County Ditches

Wetlands (from NWI)

- Trout, Rice, and Cisco Lakes

■ Cisco

■ Cisco and Wild Rice

■ Cisco and Trout

■ Wild Rice

■ Trout

Infested Lakes

■ Milfoil

■ Milfoil, Zebra Mussels

■ Zebra Mussels

■ Milfoil, Zebra Mussels, Spiny Water Flea

- Lakes (Classification & Water Quality Status)

■ General Development (GD)

■ Recreational Development (RD)

■ Natural Environment (NE)

■ Natural Environment-Special Shallow (NE-SS)

■ Impaired: Nutrients

■ Improving

■ Declining

■ No Trend

■ No Trend / Declining

■ Multiple Trends

■ Not Assessed

- State Park

State Recreation Area

Scientific and Natural Area Boundaries

Wildlife Management Areas

Conservation Easements

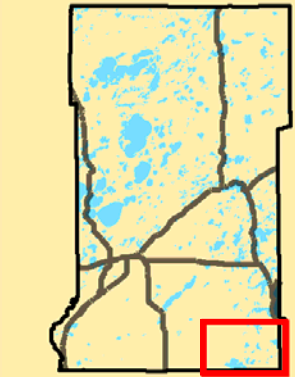
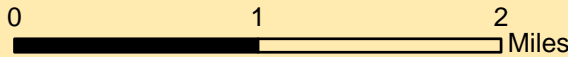
Public Land

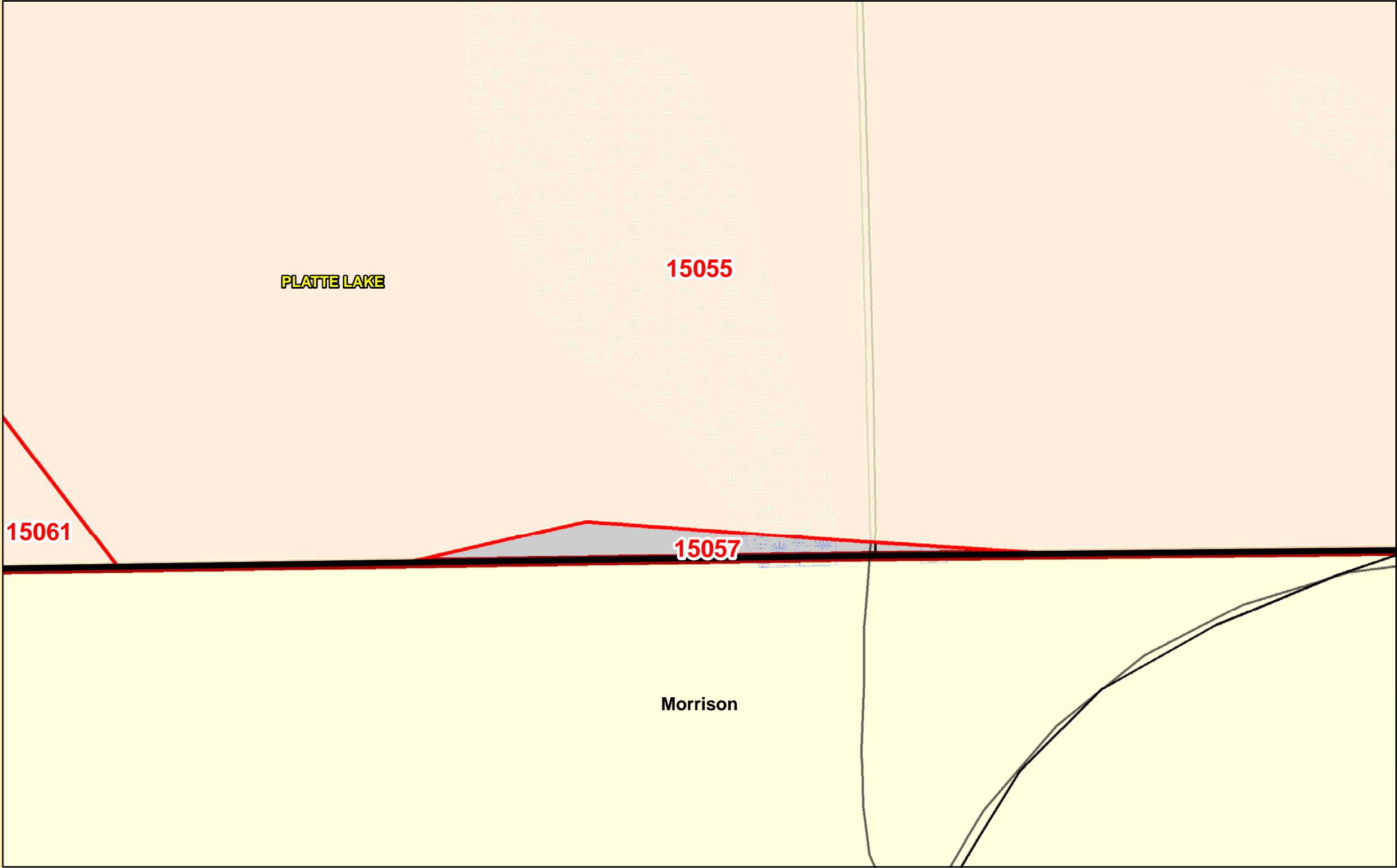
30 Lakes Watershed District

● Outlets of watersheds / catchments

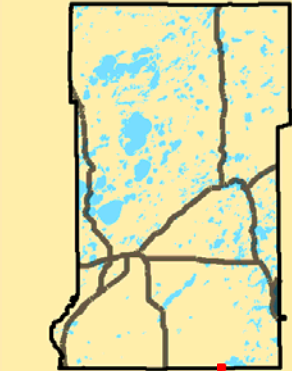
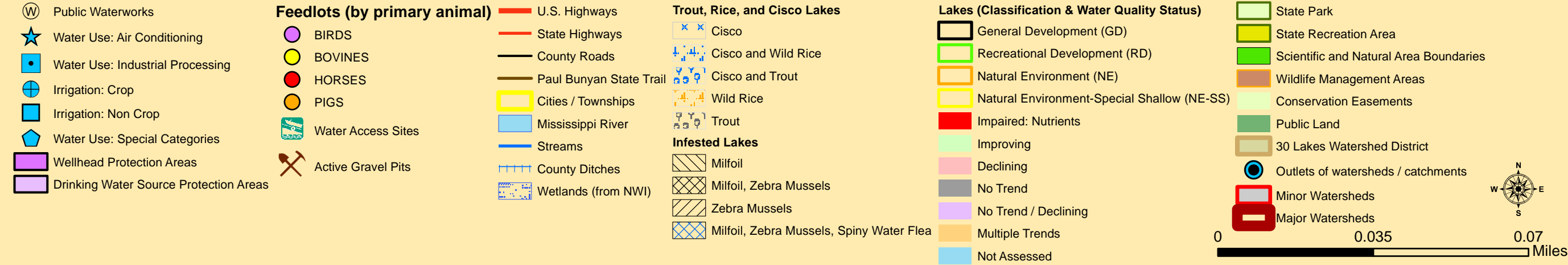
■ Minor Watersheds

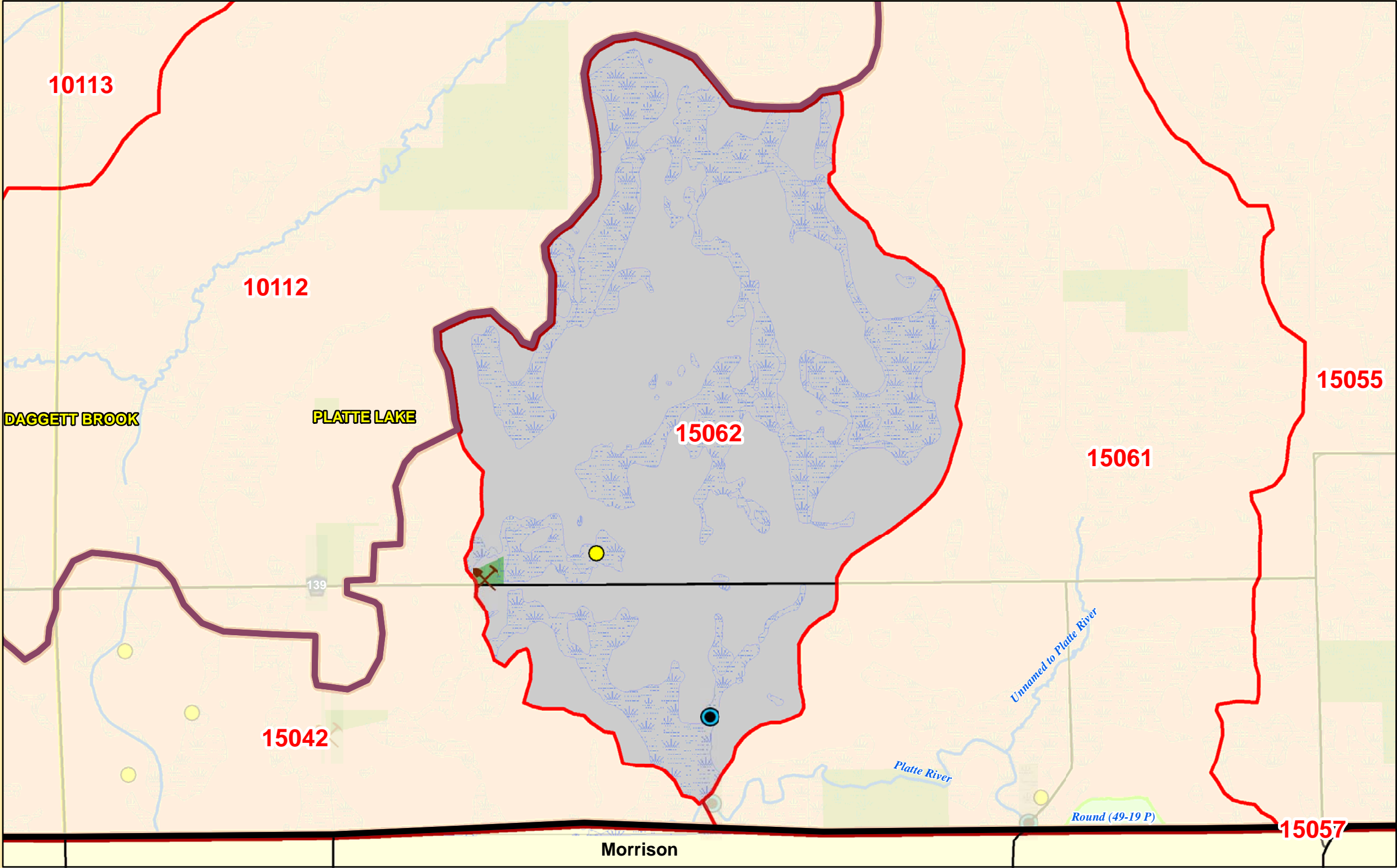
■ Major Watersheds





Minor Watershed #	15057
Major Watershed Name	Mississippi River - Sartell
Area (sq. miles)	0
Population 2010 (persons per sq. mile)	0
Population Change 2000 to 2010 (persons per sq. mile)	0
Surficial Geology	Glacial Till
% Slope (avg.)	0
% Forested (private)	29
% Disturbed Land Cover	0
% Developed	0
Extractive Uses	Minimal
# of Animal Units	0
Biological Diversity	Minimal
% Public Land	0
% Easements	0
% Lakes	0
% Streams	0
% Wetlands (private)	3
% Protected	3
Assigned Risk Level	Enhance
Implementation Priorities	
Top 24 Priority Watershed	
Surface Water	
Aquatic Invasive Species	
Stormwater	
Shoreline Buffers	
Lake Focus: Recreational Use & Development	
Lake Focus: Wild Rice / Wildlife	
Rivers / Floodplains	
Agricultural BMPs	
Ecological Sensitive Areas	
Bluffs & Steep Slopes	
Public & Private Drainage	
Development (existing and potential)	
Private Forest Stewardship	
Ground Water	
Septic Systems	
Wellhead Protection	





Minor Watershed #	15062
Major Watershed Name	Mississippi River - Sartell
Area (sq. miles)	4
Population 2010 (persons per sq. mile)	8
Population Change 2000 to 2010 (persons per sq. mile)	2
Surficial Geology	Till, drumlinized
% Slope (avg.)	4
% Forested (private)	40
% Disturbed Land Cover	40
% Developed	2
Extractive Uses	Minimal
# of Animal Units	77
Biological Diversity	Minimal
% Public Land	0
% Easements	0
% Lakes	0
% Streams	0
% Wetlands (private)	33
% Protected	33
Assigned Risk Level	Enhance
Implementation Priorities	
Top 24 Priority Watershed	
Surface Water	
Aquatic Invasive Species	
Stormwater	
Shoreline Buffers	
Lake Focus: Recreational Use & Development	
Lake Focus: Wild Rice / Wildlife	
Rivers / Floodplains	
Agricultural BMPs	
Ecological Sensitive Areas	
Bluffs & Steep Slopes	
Public & Private Drainage	
Development (existing and potential)	
Private Forest Stewardship	x
Ground Water	
Septic Systems	
Wellhead Protection	

Ⓜ Public Waterworks

★ Water Use: Air Conditioning

■ Water Use: Industrial Processing

⊕ Irrigation: Crop

■ Irrigation: Non Crop

⬠ Water Use: Special Categories

■ Wellhead Protection Areas

■ Drinking Water Source Protection Areas

Feedlots (by primary animal)

● BIRDS

● BOVINES

● HORSES

● PIGS

■ Water Access Sites

⚡ Active Gravel Pits

— U.S. Highways

— State Highways

— County Roads

— Paul Bunyan State Trail

■ Cities / Townships

■ Mississippi River

— Streams

— County Ditches

■ Wetlands (from NWI)

Trout, Rice, and Cisco Lakes

■ Cisco

■ Cisco and Wild Rice

■ Cisco and Trout

■ Wild Rice

■ Trout

Infested Lakes

■ Milfoil

■ Milfoil, Zebra Mussels

■ Zebra Mussels

■ Milfoil, Zebra Mussels, Spiny Water Flea

Lakes (Classification & Water Quality Status)

■ General Development (GD)

■ Recreational Development (RD)

■ Natural Environment (NE)

■ Natural Environment-Special Shallow (NE-SS)

■ Impaired: Nutrients

■ Improving

■ Declining

■ No Trend

■ No Trend / Declining

■ Multiple Trends

■ Not Assessed

■ State Park

■ State Recreation Area

■ Scientific and Natural Area Boundaries

■ Wildlife Management Areas

■ Conservation Easements

■ Public Land

■ 30 Lakes Watershed District

● Outlets of watersheds / catchments

■ Minor Watersheds

■ Major Watersheds

0 0.5 1 Miles

N

W E S

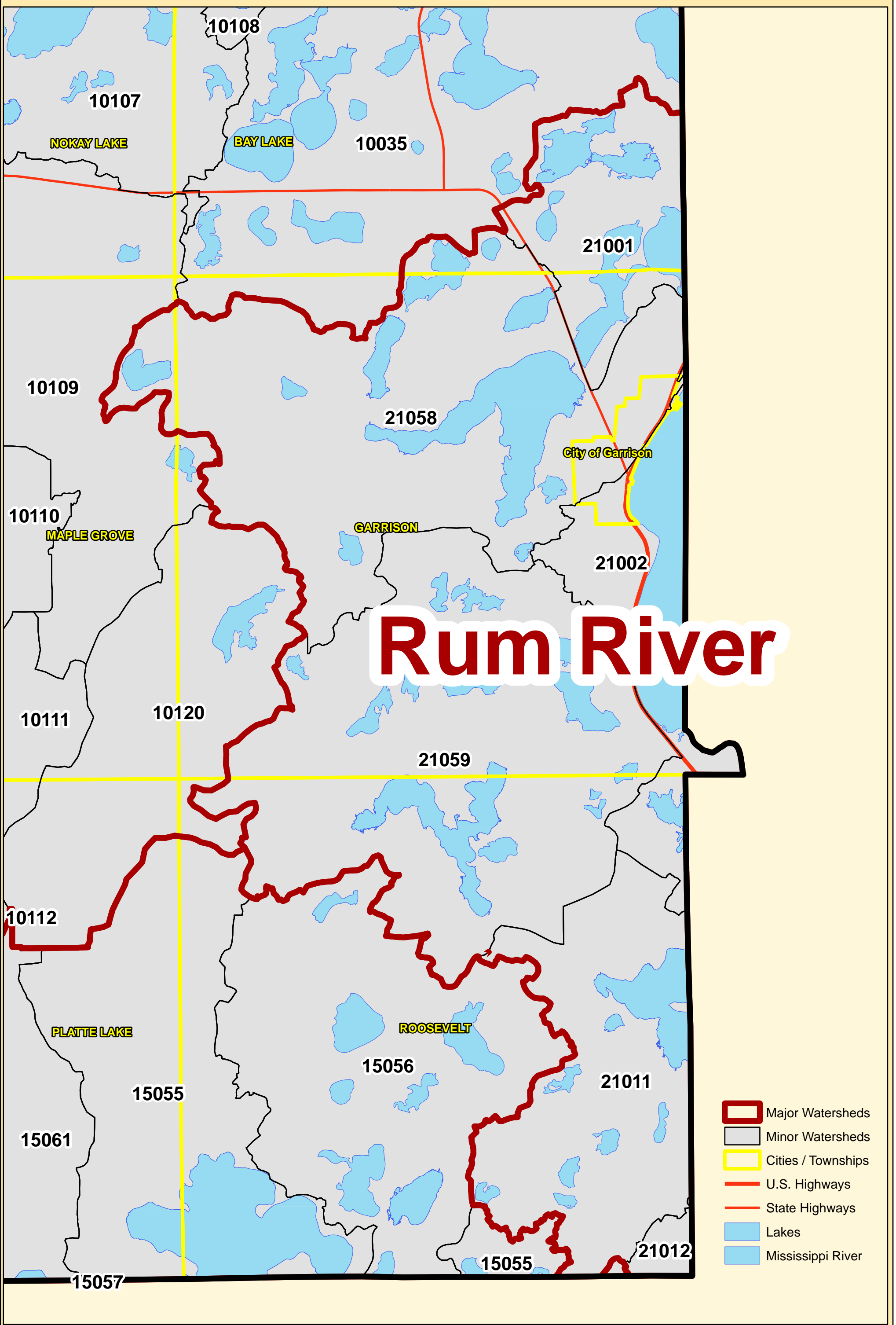
Land Services

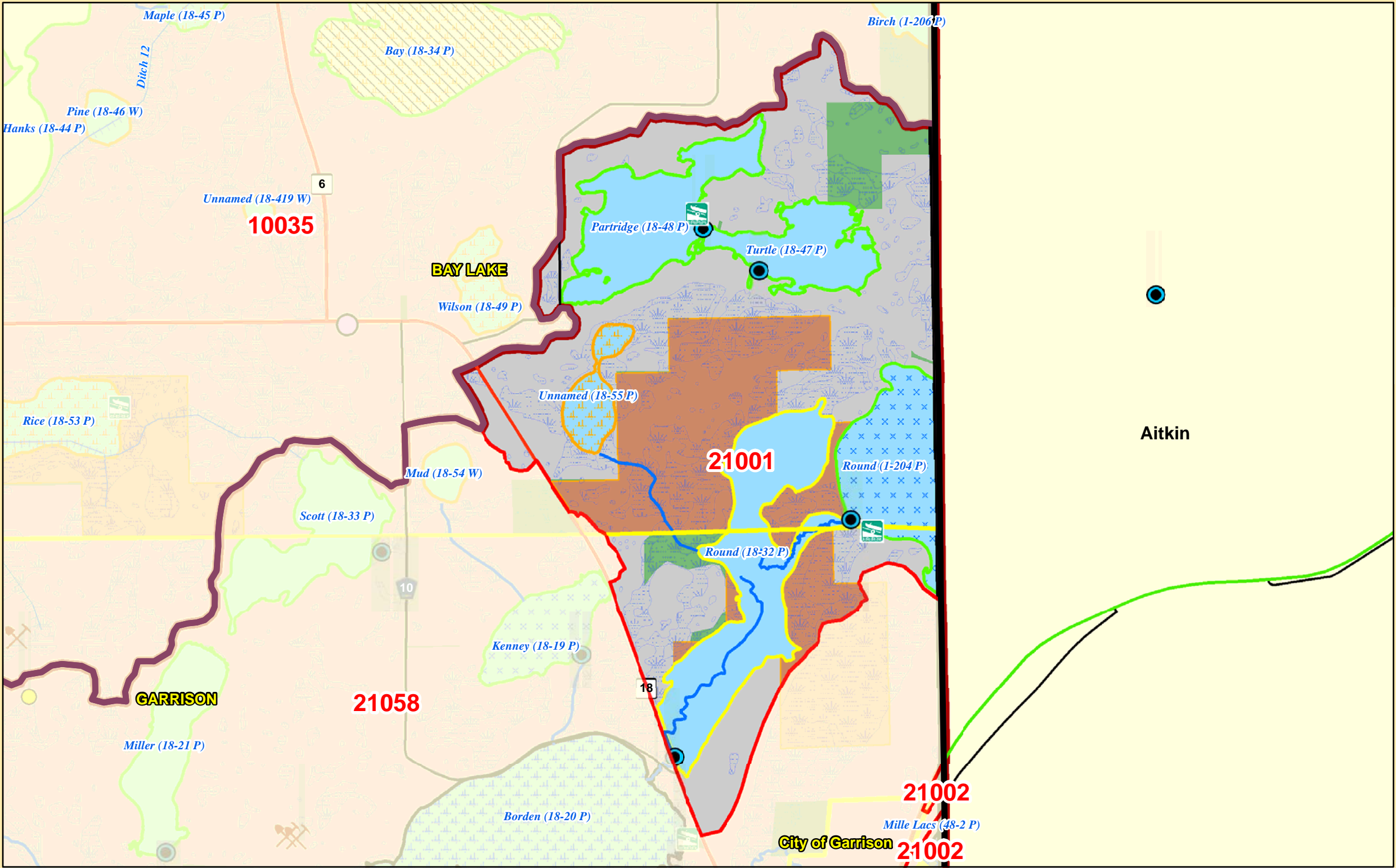
BRainerd, Minnesota 58401



Rum River (6 minor watersheds):

21001 From Round L
21002 Mille Lacs L
21011 From Whitefish L
21012 Ogechie L
21058 Garrison Cr
21059 Sequchie Cr





Minor Watershed #	21001
Major Watershed Name	Rum River
Area (sq. miles)	5
Population 2010 (persons per sq. mile)	20
Population Change 2000 to 2010 (persons per sq. mile)	0
Surficial Geology	Glacial Till
% Slope (avg.)	9
% Forested (private)	9
% Disturbed Land Cover	9
% Developed	5
Extractive Uses	Minimal
# of Animal Units	0
Biological Diversity	High
% Public Land	35
% Easements	0
% Lakes	31
% Streams	0
% Wetlands (private)	23
% Protected	89
Assigned Risk Level	Vigilance
Implementation Priorities	
Top 24 Priority Watershed	
Surface Water	
Aquatic Invasive Species	
Stormwater	x
Shoreline Buffers	x
Lake Focus: Recreational Use & Development	x
Lake Focus: Wild Rice / Wildlife	x
Lake Focus: Fisheries (Cisco)	x
Rivers / Floodplains	
Agricultural BMPs	
Ecological Sensitive Areas	x
Bluffs & Steep Slopes	
Public & Private Drainage	
Development (existing and potential)	x
Private Forest Stewardship	
Ground Water	
Septic Systems	x
Wellhead Protection	

- Ⓜ

Public Waterworks
- ★

Water Use: Air Conditioning
- Water Use: Industrial Processing
- ⊕

Irrigation: Crop
- Irrigation: Non Crop
- ⬠

Water Use: Special Categories
- Drinking Water Source Protection Areas
- Wellhead Protection Areas

●

Feedlots (by primary animal)

●

BIRDS

●

BOVINES

●

HORSES

●

PIGS

■

Water Access Sites

⛏

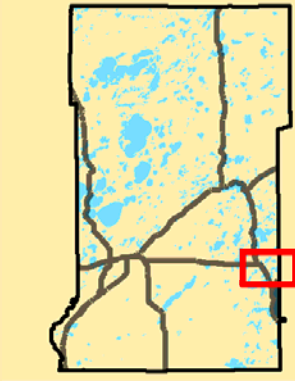
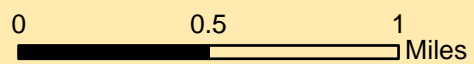
Active Gravel Pits

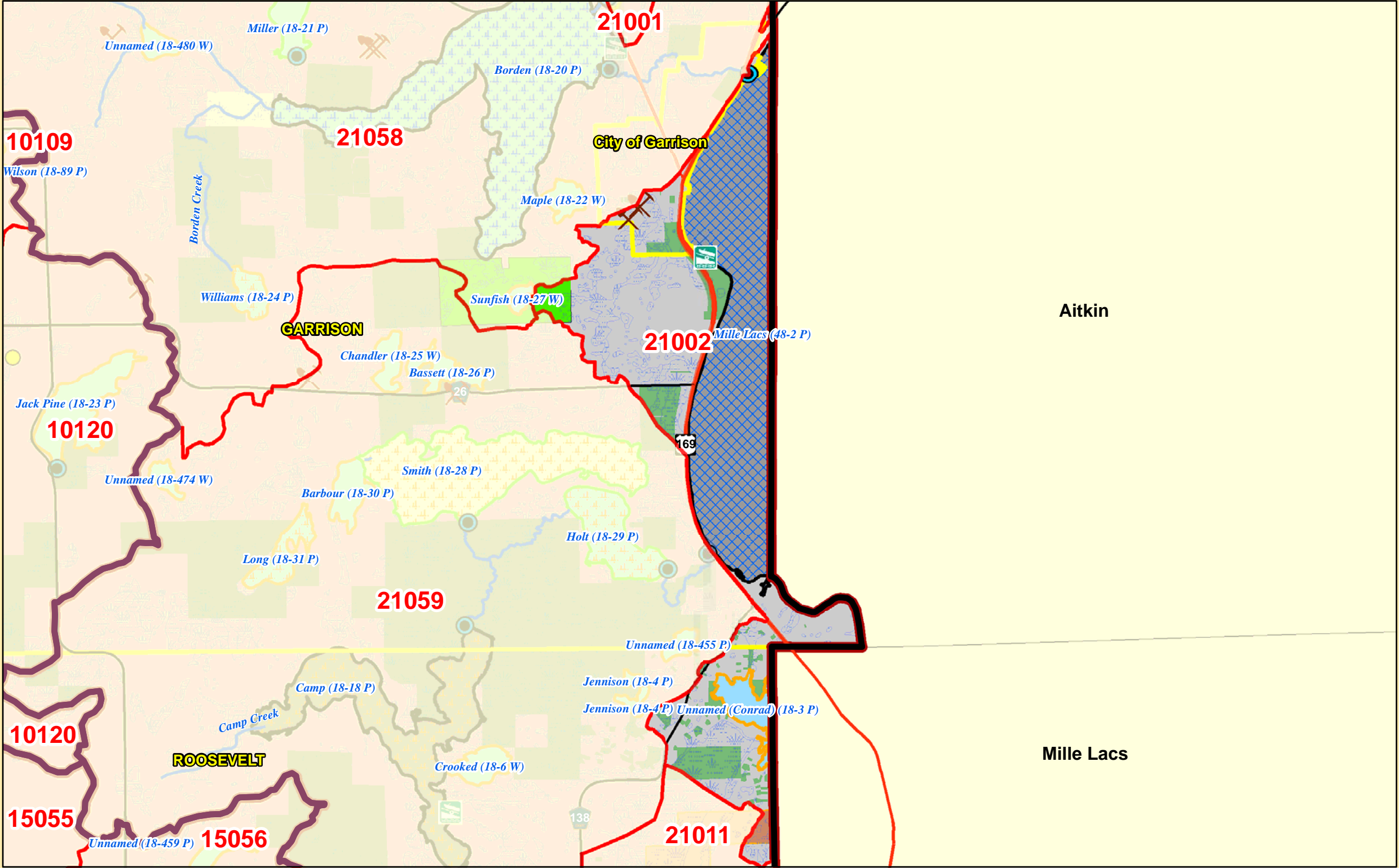
- U.S. Highways
- State Highways
- County Roads
- Paul Bunyan State Trail
- Cities / Townships
- Mississippi River
- Streams
- County Ditches
- Wetlands (from NWI)

- Trout, Rice, and Cisco Lakes
- Cisco
- Cisco and Wild Rice
- Cisco and Trout
- Wild Rice
- Trout
- Infested Lakes
- Milfoil
- Milfoil, Zebra Mussels
- Zebra Mussels
- Milfoil, Zebra Mussels, Spiny Water Flea

- Lakes (Classification & Water Quality Status)
- General Development (GD)
- Recreational Development (RD)
- Natural Environment (NE)
- Natural Environment-Special Shallow (NE-SS)
- Impaired: Nutrients
- Improving
- Declining
- No Trend
- No Trend / Declining
- Multiple Trends
- Not Assessed

- State Park
- State Recreation Area
- Scientific and Natural Area Boundaries
- Wildlife Management Areas
- Conservation Easements
- Public Land
- 30 Lakes Watershed District
- Outlets of watersheds / catchments
- Major Watersheds
- Minor Watersheds





Minor Watershed #	21002
Major Watershed Name	Rum River
Area (sq. miles)	5
Population 2010 (persons per sq. mile)	32
Population Change 2000 to 2010 (persons per sq. mile)	-1
Surficial Geology	Glacial Till
% Slope (avg.)	10
% Forested (private)	15
% Disturbed Land Cover	9
% Developed	8
Extractive Uses	Moderate
# of Animal Units	0
Biological Diversity	Outstanding
% Public Land	13
% Easements	0
% Lakes	44
% Streams	0
% Wetlands (private)	12
% Protected	69
Assigned Risk Level	Protection
Implementation Priorities	
Top 24 Priority Watershed	
Surface Water	
Aquatic Invasive Species	x
Stormwater	
Shoreline Buffers	
Lake Focus: Recreational Use & Development	x
Lake Focus: Wild Rice / Wildlife	
Rivers / Floodplains	
Agricultural BMPs	
Ecological Sensitive Areas	x
Bluffs & Steep Slopes	
Public & Private Drainage	
Development (existing and potential)	x
Private Forest Stewardship	
Ground Water	
Septic Systems	
Wellhead Protection	

Ⓜ

Public Waterworks

★

Water Use: Air Conditioning

■

Water Use: Industrial Processing

⊕

Irrigation: Crop

■

Irrigation: Non Crop

⬠

Water Use: Special Categories

■

Wellhead Protection Areas

■

Drinking Water Source Protection Areas

●

BIRDS

●

BOVINES

●

HORSES

●

PIGS

🚰

Water Access Sites

⛏

Active Gravel Pits

—

U.S. Highways

—

State Highways

—

County Roads

—

Paul Bunyan State Trail

■

Cities / Townships

■

Mississippi River

—

Streams

—

County Ditches

■

Wetlands (from NWI)

🐟

Cisco

🐟

Cisco and Wild Rice

🐟

Cisco and Trout

🐟

Wild Rice

🐟

Trout

Infested Lakes

🦠

Milfoil

🦠

Milfoil, Zebra Mussels

🦠

Zebra Mussels

🦠

Milfoil, Zebra Mussels, Spiny Water Flea

Lakes (Classification & Water Quality Status)

■

General Development (GD)

■

Recreational Development (RD)

■

Natural Environment (NE)

■

Natural Environment-Special Shallow (NE-SS)

■

Impaired: Nutrients

■

Improving

■

Declining

■

No Trend

■

No Trend / Declining

■

Multiple Trends

■

Not Assessed

■

State Park

■

State Recreation Area

■

Scientific and Natural Area Boundaries

■

Wildlife Management Areas

■

Conservation Easements

■

Public Land

■

30 Lakes Watershed District

●

Outlets of watersheds / catchments

■

Minor Watersheds

■

Major Watersheds

0

1

2

Miles

N

W

E

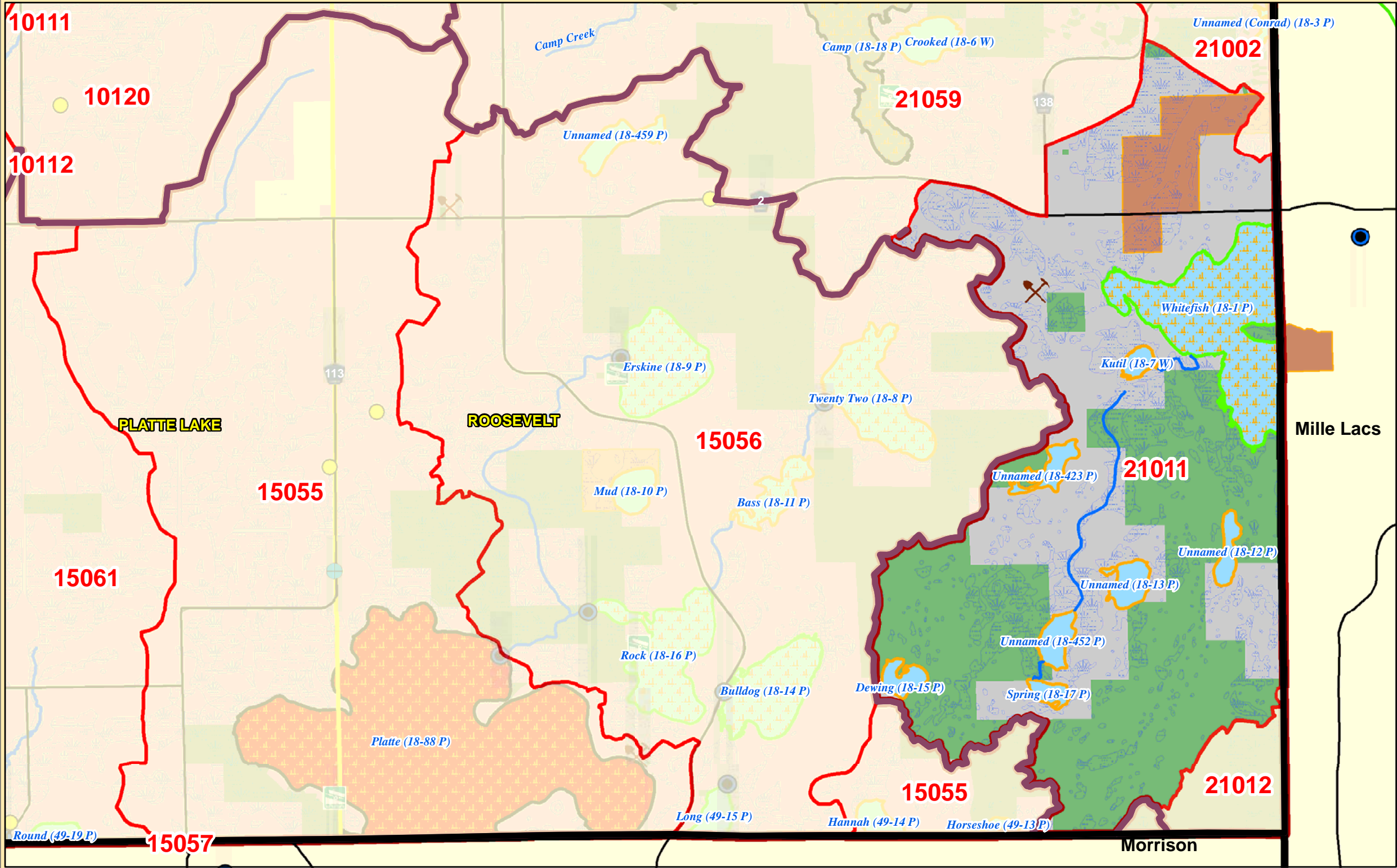
S

🌲

Land Services

CROW WING COUNTY

BRainerd, Minnesota 56401



Minor Watershed #	21011
Major Watershed Name	Rum River
Area (sq. miles)	9
Population 2010 (persons per sq. mile)	5
Population Change 2000 to 2010 (persons per sq. mile)	-3
Surficial Geology	Glacial Till
% Slope (avg.)	13
% Forested (private)	13
% Disturbed Land Cover	8
% Developed	2
Extractive Uses	Minimal
# of Animal Units	0
Biological Diversity	Outstanding
% Public Land	42
% Easements	0
% Lakes	12
% Streams	0
% Wetlands (private)	14
% Protected	68
Assigned Risk Level	Vigilance
Implementation Priorities	
Top 24 Priority Watershed	
Surface Water	
Aquatic Invasive Species	
Stormwater	x
Shoreline Buffers	x
Lake Focus: Recreational Use & Development	x
Lake Focus: Wild Rice / Wildlife	x
Rivers / Floodplains	
Agricultural BMPs	
Ecological Sensitive Areas	x
Bluffs & Steep Slopes	x
Public & Private Drainage	
Development (existing and potential)	
Private Forest Stewardship	
Ground Water	
Septic Systems	x
Wellhead Protection	

- Ⓜ

Public Waterworks
- ★

Water Use: Air Conditioning
- Water Use: Industrial Processing
- ⊕

Irrigation: Crop
- Irrigation: Non Crop
- ⬠

Water Use: Special Categories
- Drinking Water Source Protection Areas
- Wellhead Protection Areas

●

Feedlots (by primary animal)

●

BIRDS

●

BOVINES

●

HORSES

●

PIGS

■

Water Access Sites

⛏

Active Gravel Pits

- U.S. Highways
- State Highways
- County Roads
- Paul Bunyan State Trail
- Cities / Townships
- Mississippi River
- Streams
- County Ditches
- Wetlands (from NWI)

- Trout, Rice, and Cisco Lakes

■

Cisco

■

Cisco and Wild Rice

■

Cisco and Trout

■

Wild Rice

■

Trout

Infested Lakes

■

Milfoil

■

Milfoil, Zebra Mussels

■

Zebra Mussels

■

Milfoil, Zebra Mussels, Spiny Water Flea
- Lakes (Classification & Water Quality Status)

■

General Development (GD)

■

Recreational Development (RD)

■

Natural Environment (NE)

■

Natural Environment-Special Shallow (NE-SS)

■

Impaired: Nutrients

■

Improving

■

Declining

■

No Trend

■

No Trend / Declining

■

Multiple Trends

■

Not Assessed
- State Park

■

State Recreation Area

■

Scientific and Natural Area Boundaries

■

Wildlife Management Areas

■

Conservation Easements

■

Public Land

●

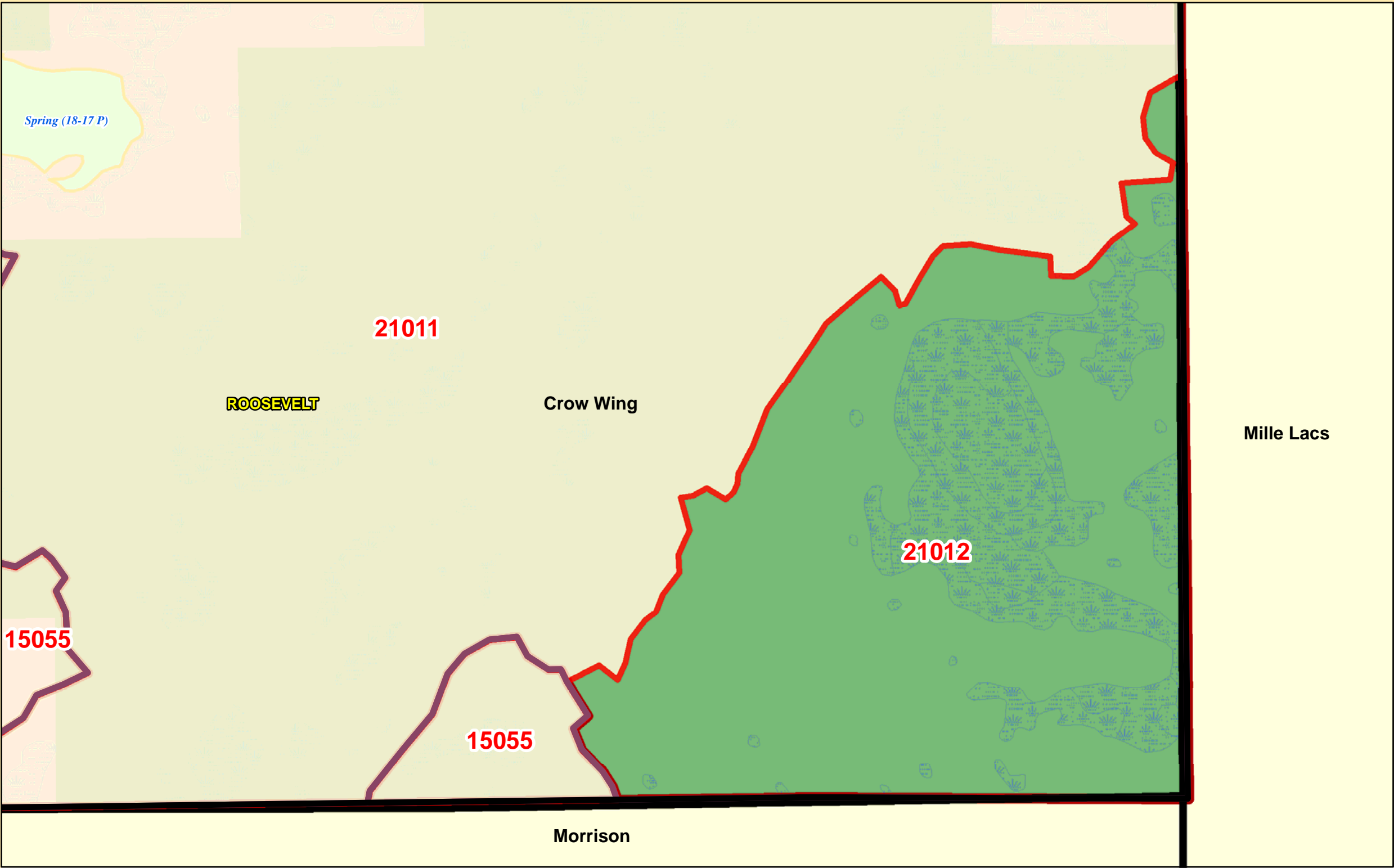
Outlets watersheds / catchments

■

Major Watersheds

■

Minor Watersheds
-
-
-
-



Minor Watershed #	21012
Major Watershed Name	Rum River
Area (sq. miles)	0
Population 2010 (persons per sq. mile)	0
Population Change 2000 to 2010 (persons per sq. mile)	0
Surficial Geology	Glacial Till
% Slope (avg.)	15
% Forested (private)	0
% Disturbed Land Cover	0
% Developed	0
Extractive Uses	Minimal
# of Animal Units	0
Biological Diversity	Outstanding
% Public Land	100
% Easements	0
% Lakes	0
% Streams	0
% Wetlands (private)	0
% Protected	100

Assigned Risk Level	Vigilance
---------------------	-----------

Implementation Priorities	
Top 24 Priority Watershed	
Surface Water	
Aquatic Invasive Species	
Stormwater	x
Shoreline Buffers	
Lake Focus: Recreational Use & Development	
Lake Focus: Wild Rice / Wildlife	
Rivers / Floodplains	
Agricultural BMPs	
Ecological Sensitive Areas	x
Bluffs & Steep Slopes	x
Public & Private Drainage	
Development (existing and potential)	
Private Forest Stewardship	
Ground Water	
Septic Systems	
Wellhead Protection	

Public Waterworks

Water Use: Air Conditioning

Water Use: Industrial Processing

Irrigation: Crop

Irrigation: Non Crop

Water Use: Special Categories

Drinking Water Source Protection Areas

Wellhead Protection Areas

Feedlots (by primary animal)

BIRDS

BOVINES

HORSES

PIGS

Water Access Sites

Active Gravel Pits

U.S. Highways

State Highways

County Roads

Paul Bunyan State Trail

Cities / Townships

Mississippi River

Streams

County Ditches

Wetlands (from NWI)

Trout, Rice, and Cisco Lakes

Cisco

Cisco and Wild Rice

Cisco and Trout

Wild Rice

Trout

Infested Lakes

Milfoil

Milfoil, Zebra Mussels

Zebra Mussels

Milfoil, Zebra Mussels, Spiny Water Flea

Lakes (Classification & Water Quality Status)

General Development (GD)

Recreational Development (RD)

Natural Environment (NE)

Natural Environment-Special Shallow (NE-SS)

Impaired: Nutrients

Improving

Declining

No Trend

No Trend / Declining

Multiple Trends

Not Assessed

State Park

State Recreation Area

Scientific and Natural Area Boundaries

Wildlife Management Areas

Conservation Easements

Public Land

Outlets of watersheds / catchments

Major Watersheds

Minor Watersheds

0

0.15

0.3

Miles

N

E

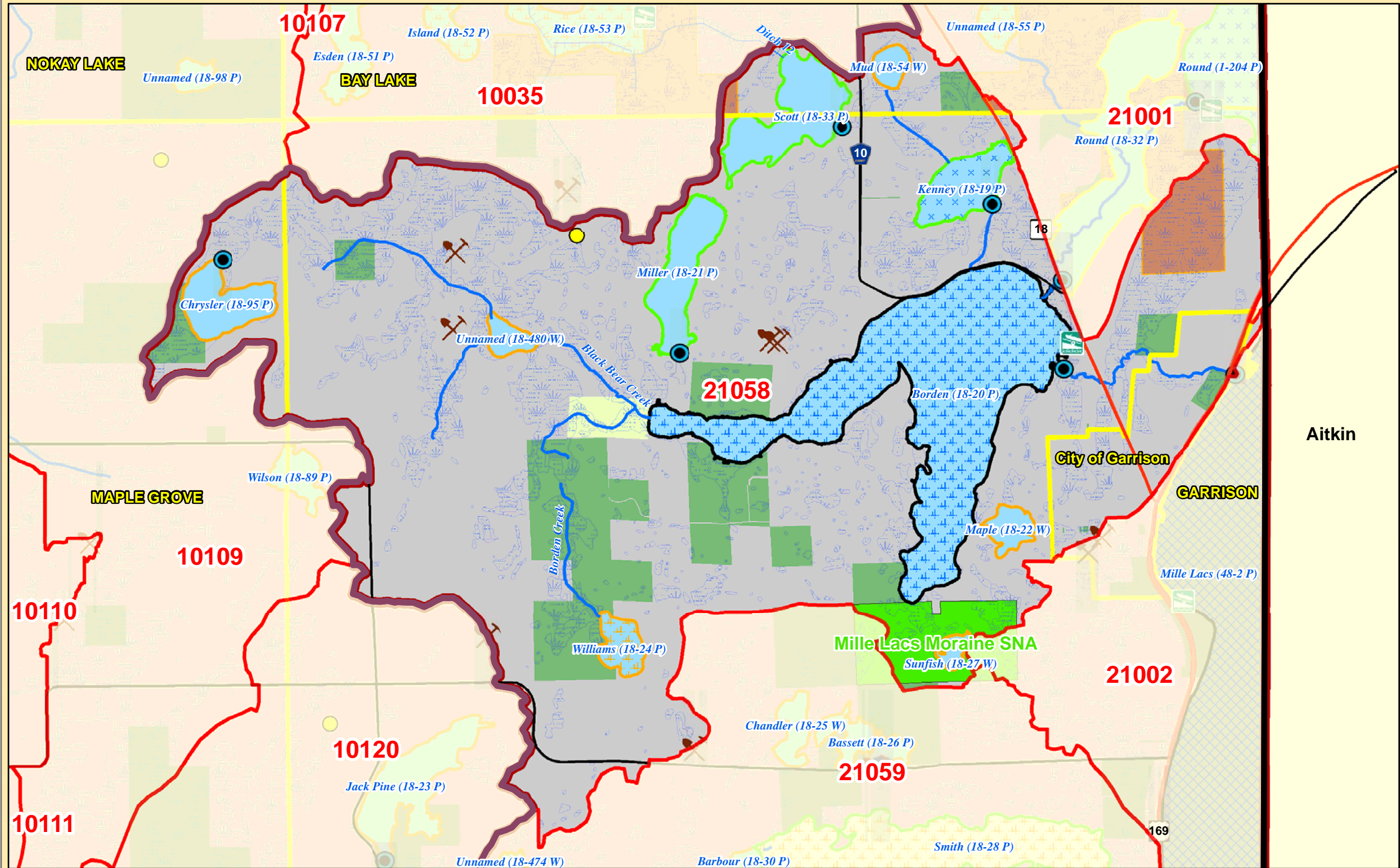
S

W

Environmental Services

CROW WING COUNTY

BRainerd, WinNEsota 58401



Minor Watershed #	21058
Major Watershed Name	Rum River
Area (sq. miles)	18
Population 2010 (persons per sq. mile)	40
Population Change 2000 to 2010 (persons per sq. mile)	5
Surficial Geology	Glacial Till
% Slope (avg.)	9
% Forested (private)	33
% Disturbed Land Cover	14
% Developed	6
Extractive Uses	High
# of Animal Units	57
Biological Diversity	Outstanding
% Public Land	11
% Easements	1
% Lakes	16
% Streams	0
% Wetlands (private)	32
% Protected	59
Assigned Risk Level	Protection
Implementation Priorities	
Top 24 Priority Watershed	x
Surface Water	
Aquatic Invasive Species	
Stormwater	x
Shoreline Buffers	x
Lake Focus: Recreational Use & Development	x
Lake Focus: Wild Rice / Wildlife	x
Lake / Stream Focus: Fisheries (Trout, Cisco)	x
Rivers / Floodplains	
Agricultural BMPs	
Ecological Sensitive Areas	x
Bluffs & Steep Slopes	
Public & Private Drainage	
Development (existing and potential)	x
Private Forest Stewardship	x
Ground Water	
Septic Systems	x
Wellhead Protection	

Public Waterworks

Water Use: Air Conditioning

Water Use: Industrial Processing

Irrigation: Crop

Irrigation: Non Crop

Water Use: Special Categories

Wellhead Protection Areas

Drinking Water Source Protection Areas

Feedlots (by primary animal)

BIRDS

BOVINES

HORSES

PIGS

Water Access Sites

Active Gravel Pits

U.S. Highways

State Highways

County Roads

Paul Bunyan State Trail

Cities / Townships

Mississippi River

Streams

County Ditches

Wetlands (from NWI)

Trout, Rice, and Cisco Lakes

Cisco

Cisco and Wild Rice

Cisco and Trout

Wild Rice

Trout

Infested Lakes

Milfoil

Milfoil, Zebra Mussels

Zebra Mussels

Milfoil, Zebra Mussels, Spiny Water Flea

Lakes (Classification & Water Quality Status)

General Development (GD)

Recreational Development (RD)

Natural Environment (NE)

Natural Environment-Special Shallow (NE-SS)

Impaired: Nutrients

Improving

Declining

No Trend

No Trend / Declining

Multiple Trends

Not Assessed

State Park

State Recreation Area

Scientific and Natural Area Boundaries

Wildlife Management Areas

Conservation Easements

Public Land

30 Lakes Watershed District

Outlets of watersheds / catchments

Minor Watersheds

Major Watersheds

Scale: 0 0.75 1.5 Miles

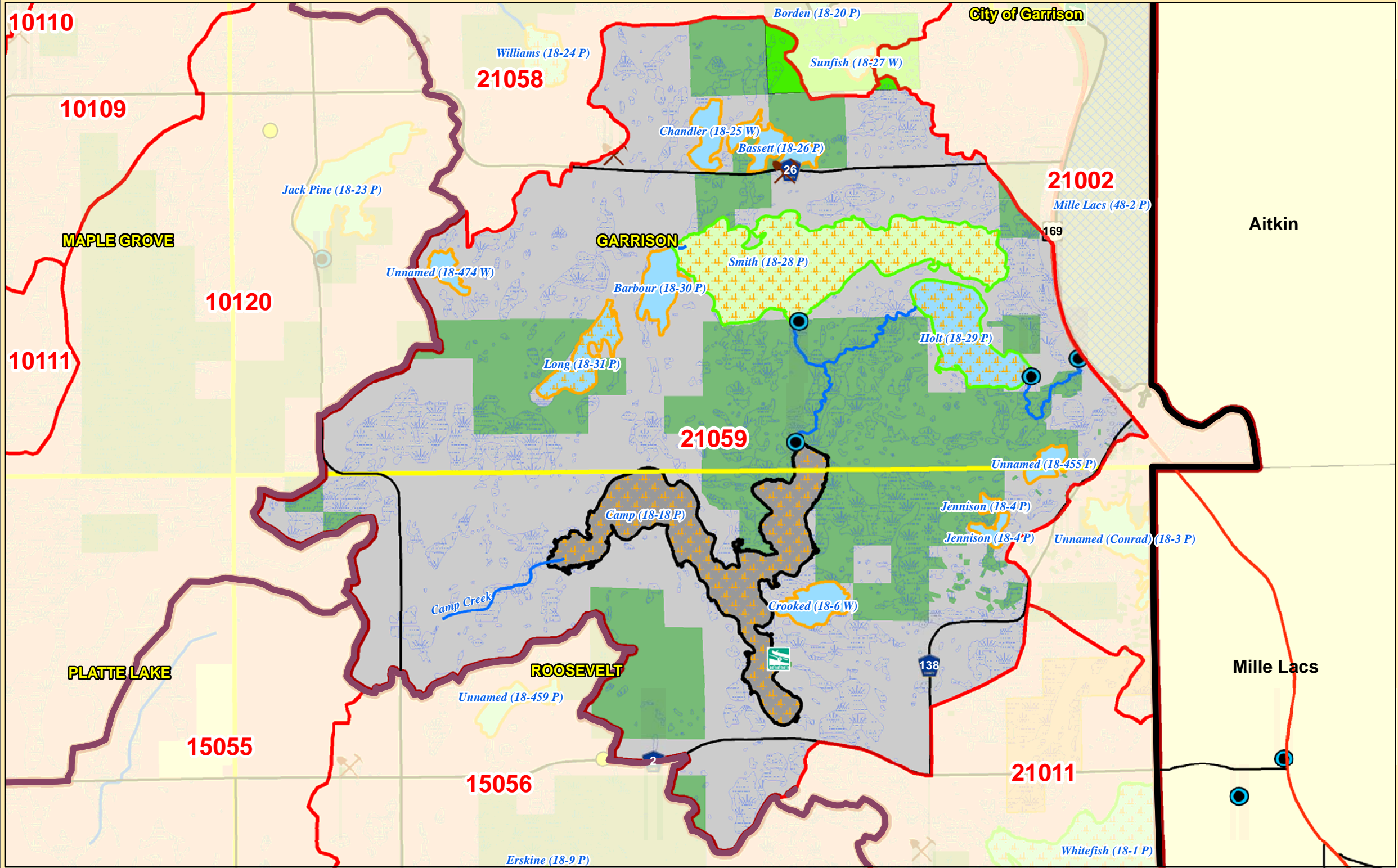
North Arrow

Inset Map of Minnesota showing the location of Crow Wing County

Land Services

CROW WING COUNTY

BRainerd, Minnesota 56401



Minor Watershed #	21059
Major Watershed Name	Rum River
Area (sq. miles)	18
Population 2010 (persons per sq. mile)	18
Population Change 2000 to 2010 (persons per sq. mile)	1
Surficial Geology	Glacial Till
% Slope (avg.)	14
% Forested (private)	27
% Disturbed Land Cover	11
% Developed	4
Extractive Uses	Moderate
# of Animal Units	0
Biological Diversity	Outstanding
% Public Land	26
% Easements	0
% Lakes	15
% Streams	0
% Wetlands (private)	14
% Protected	55
Assigned Risk Level	Protection
Implementation Priorities	
Top 24 Priority Watershed	x
Surface Water	
Aquatic Invasive Species	
Stormwater	x
Shoreline Buffers	x
Lake Focus: Recreational Use & Development	x
Lake Focus: Wild Rice / Wildlife	x
Stream Focus: Fisheries (Trout)	x
Rivers / Floodplains	
Agricultural BMPs	
Ecological Sensitive Areas	x
Bluffs & Steep Slopes	x
Public & Private Drainage	
Development (existing and potential)	x
Private Forest Stewardship	
Ground Water	
Septic Systems	x
Wellhead Protection	

- Ⓜ

Public Waterworks
- ★

Water Use: Air Conditioning
- Water Use: Industrial Processing
- ⊕

Irrigation: Crop
- Irrigation: Non Crop
- ⬠

Water Use: Special Categories
- Drinking Water Source Protection Areas
- Wellhead Protection Areas
- BIRDS
- BOVINES
- HORSES
- PIGS
- 🚰

Water Access Sites
- ⛏

Active Gravel Pits

—

U.S. Highways

—

State Highways

—

County Roads

—

Paul Bunyan State Trail

■

Cities / Townships

■

Mississippi River

—

Streams

—

County Ditches

■

Wetlands (from NWI)

—

Trout, Rice, and Cisco Lakes

■

Cisco

■

Cisco and Wild Rice

■

Cisco and Trout

■

Wild Rice

■

Trout

—

Infested Lakes

■

Milfoil

■

Milfoil, Zebra Mussels

■

Zebra Mussels

■

Milfoil, Zebra Mussels, Spiny Water Flea

—

Lakes (Classification & Water Quality Status)

■

General Development (GD)

■

Recreational Development (RD)

■

Natural Environment (NE)

■

Natural Environment-Special Shallow (NE-SS)

■

Impaired: Nutrients

■

Improving

■

Declining

■

No Trend

■

No Trend / Declining

■

Multiple Trends

■

Not Assessed

■

State Park

■

State Recreation Area

■

Scientific and Natural Area Boundaries

■

Wildlife Management Areas

■

Conservation Easements

■

Public Land

■

30 Lakes Watershed District

●

Outlets of watersheds / catchments

■

Major Watersheds

■

Minor Watersheds