

Figure 39: Implementation Priority: AIS

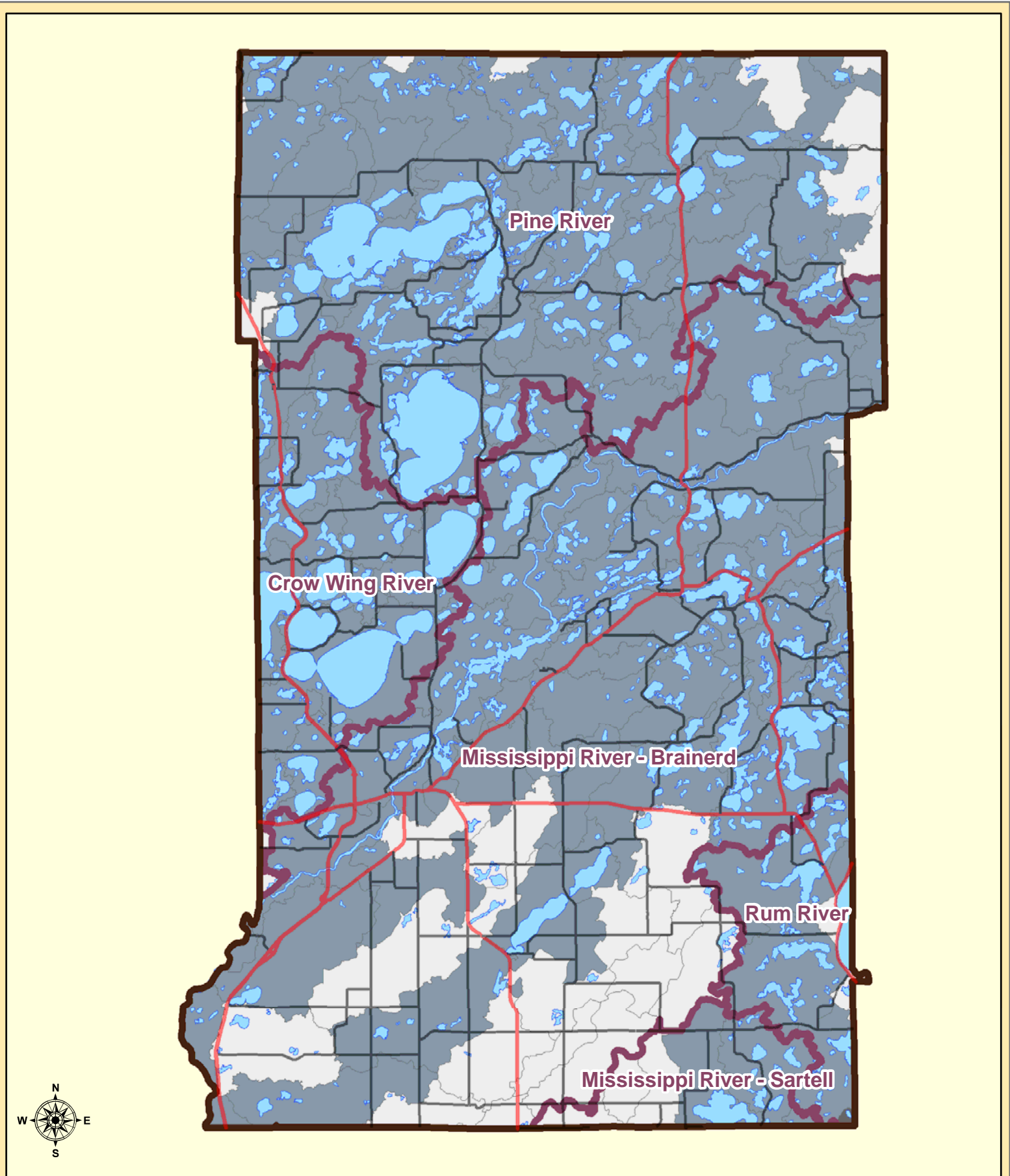
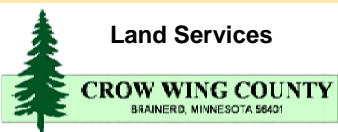


Figure 40: Stormwater & Shoreline Buffers



Watershed Focus:		Major Watersheds	US Highways
	Stormwater and Shoreline Buffers		Lakes
	Stormwater Only		Mississippi River
			State Highways
			County Roads

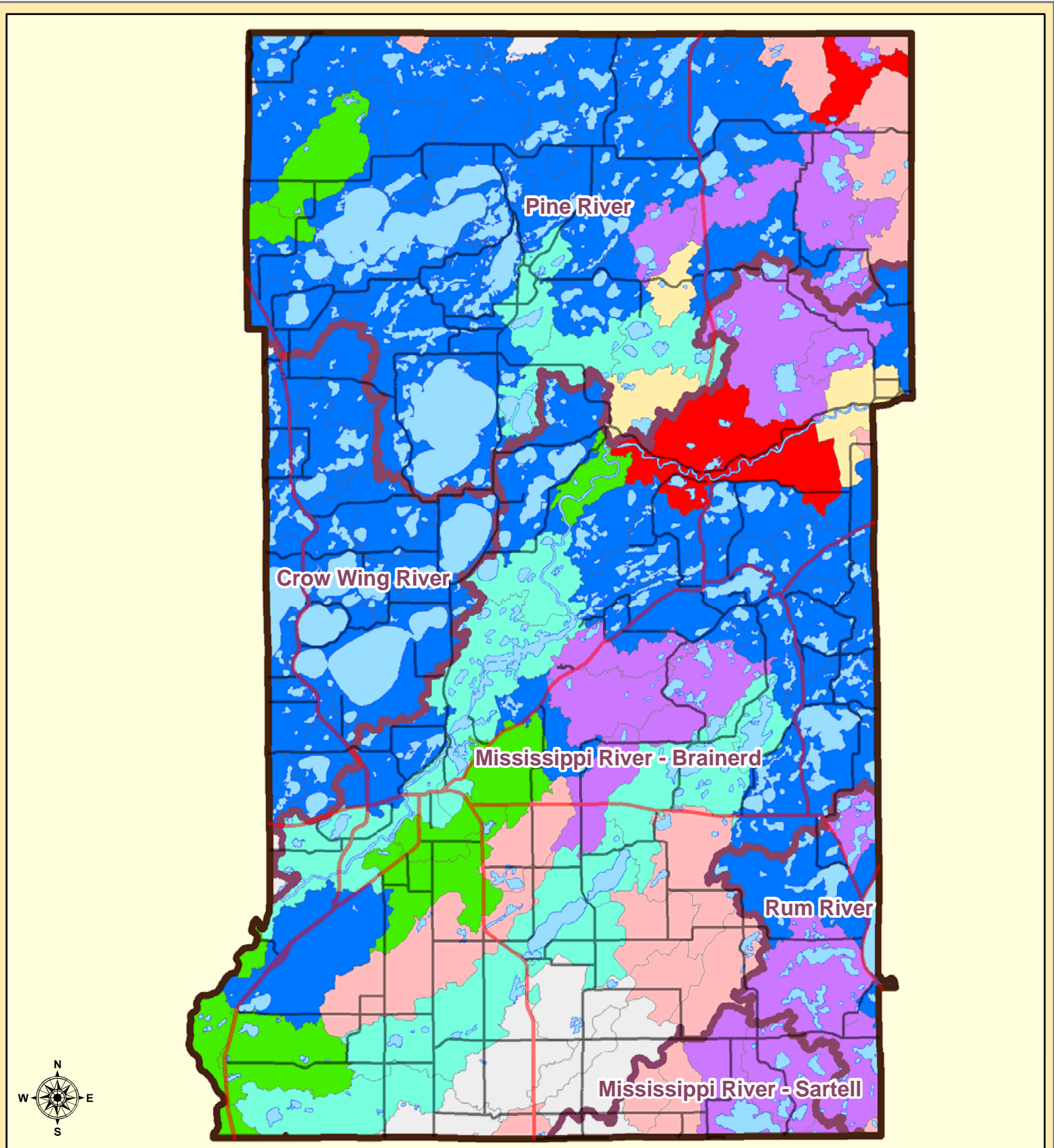
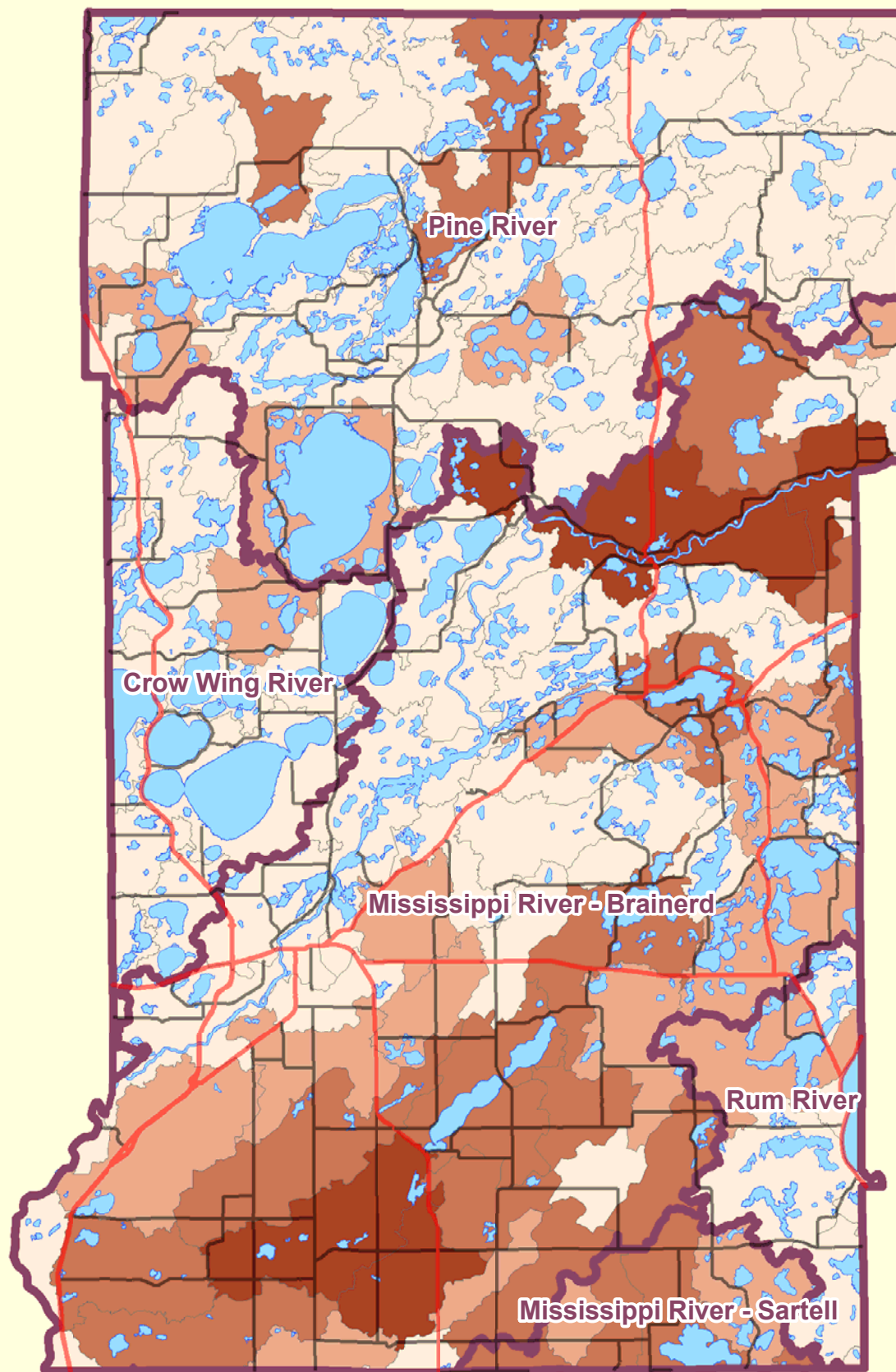


Figure 41: Surface Water Priority Watersheds

**Surface Water Focus (by watershed)**

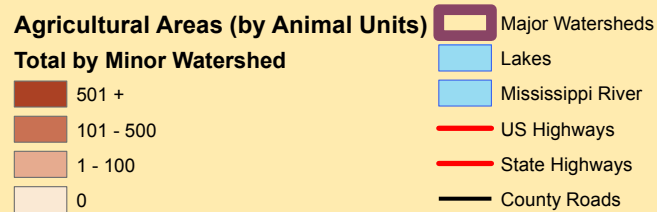
- |  |   |
|--|---|
| <span style="display: inline-block; width: 15px; height: 15px; background-color: blue; border: 1px solid black;"></span> Lakes                     | <span style="display: inline-block; width: 15px; height: 15px; background-color: brown; border: 1px solid black;"></span> Major Watersheds      |
| <span style="display: inline-block; width: 15px; height: 15px; background-color: purple; border: 1px solid black;"></span> Lakes and Wetlands      | <span style="display: inline-block; width: 15px; height: 15px; background-color: lightblue; border: 1px solid black;"></span> Lakes             |
| <span style="display: inline-block; width: 15px; height: 15px; background-color: cyan; border: 1px solid black;"></span> Lakes and Rivers          | <span style="display: inline-block; width: 15px; height: 15px; background-color: lightblue; border: 1px solid black;"></span> Mississippi River |
| <span style="display: inline-block; width: 15px; height: 15px; background-color: green; border: 1px solid black;"></span> Rivers                   | <span style="display: inline-block; width: 15px; height: 15px; background-color: red; border: 1px solid black;"></span> US Highways             |
| <span style="display: inline-block; width: 15px; height: 15px; background-color: yellow; border: 1px solid black;"></span> Rivers and Wetlands     | <span style="display: inline-block; width: 15px; height: 15px; background-color: red; border: 1px solid black;"></span> State Highways          |
| <span style="display: inline-block; width: 15px; height: 15px; background-color: pink; border: 1px solid black;"></span> Wetlands                  | <span style="display: inline-block; width: 15px; height: 15px; background-color: black; border: 1px solid black;"></span> County Roads          |
| <span style="display: inline-block; width: 15px; height: 15px; background-color: red; border: 1px solid black;"></span> Lakes, River, and Wetlands |   |

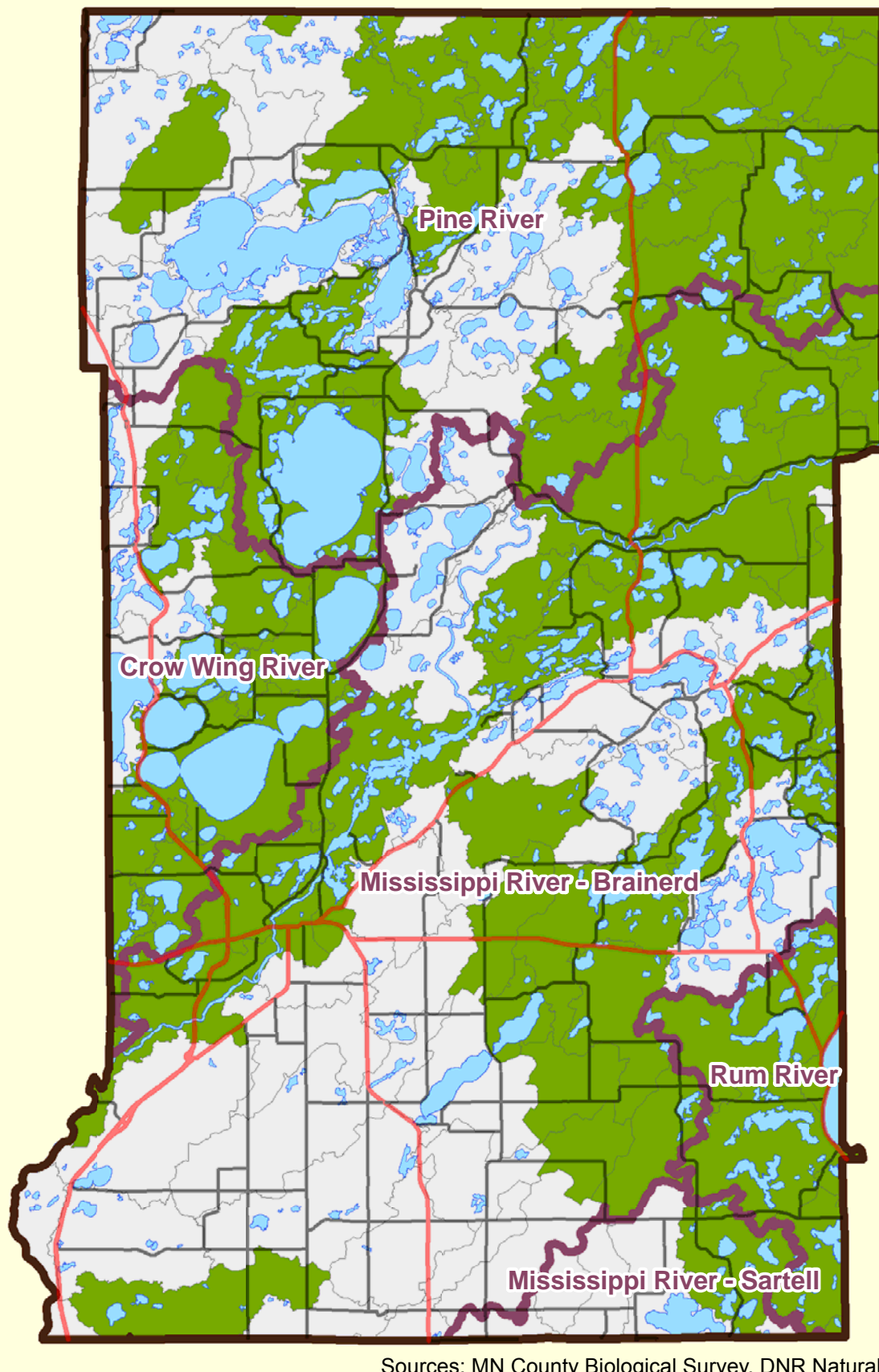




Source: Minnesota Pollution Control Agency

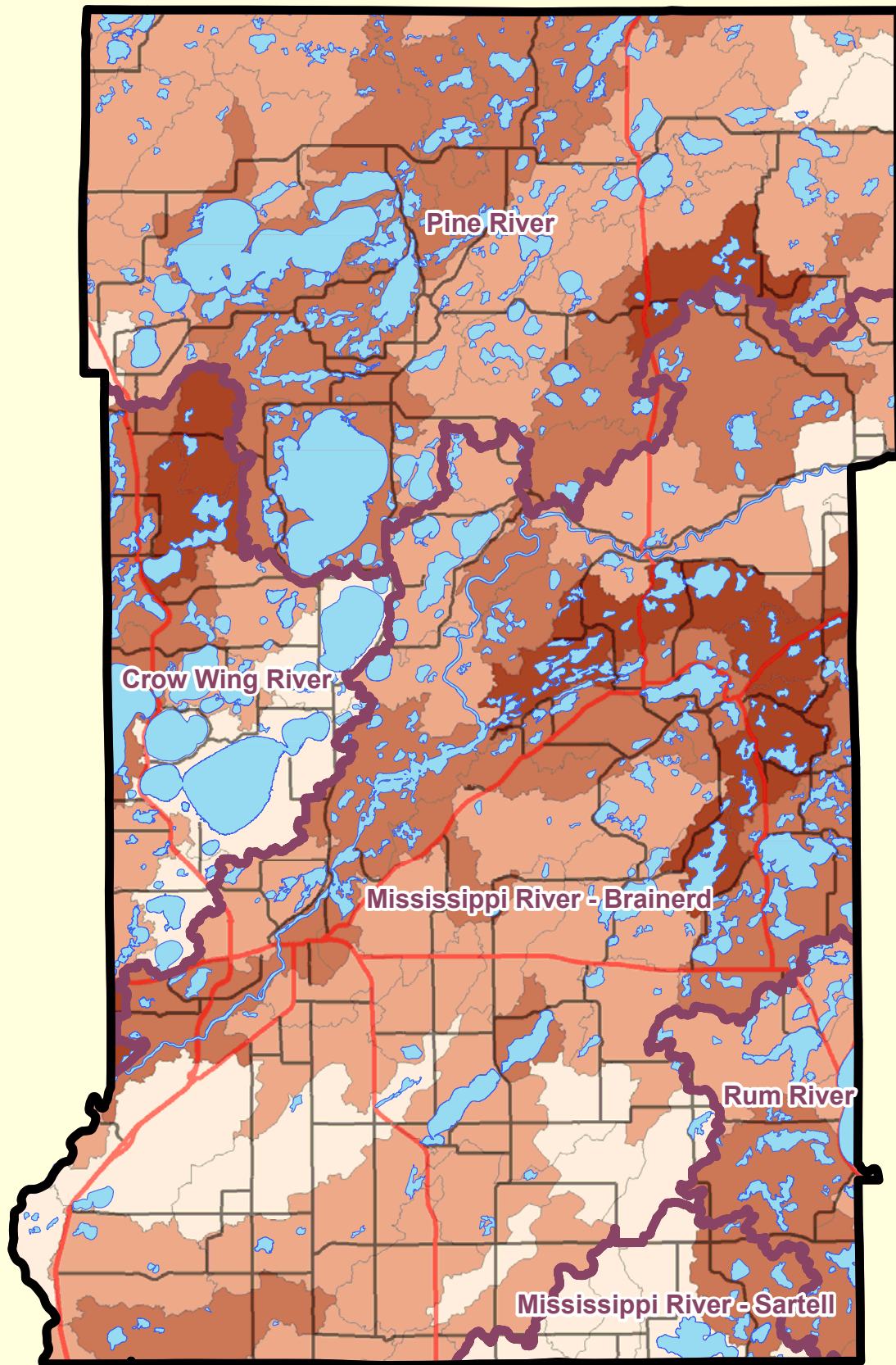
Figure 42: Implementation Priority: Agricultural BMPs





Sources: MN County Biological Survey, DNR Natural Heritage Database

Figure 43: Implementation Priority: Ecologically Important Watersheds



Slopes derived from 30 meter Digital Elevation Model (lakes were excluded).

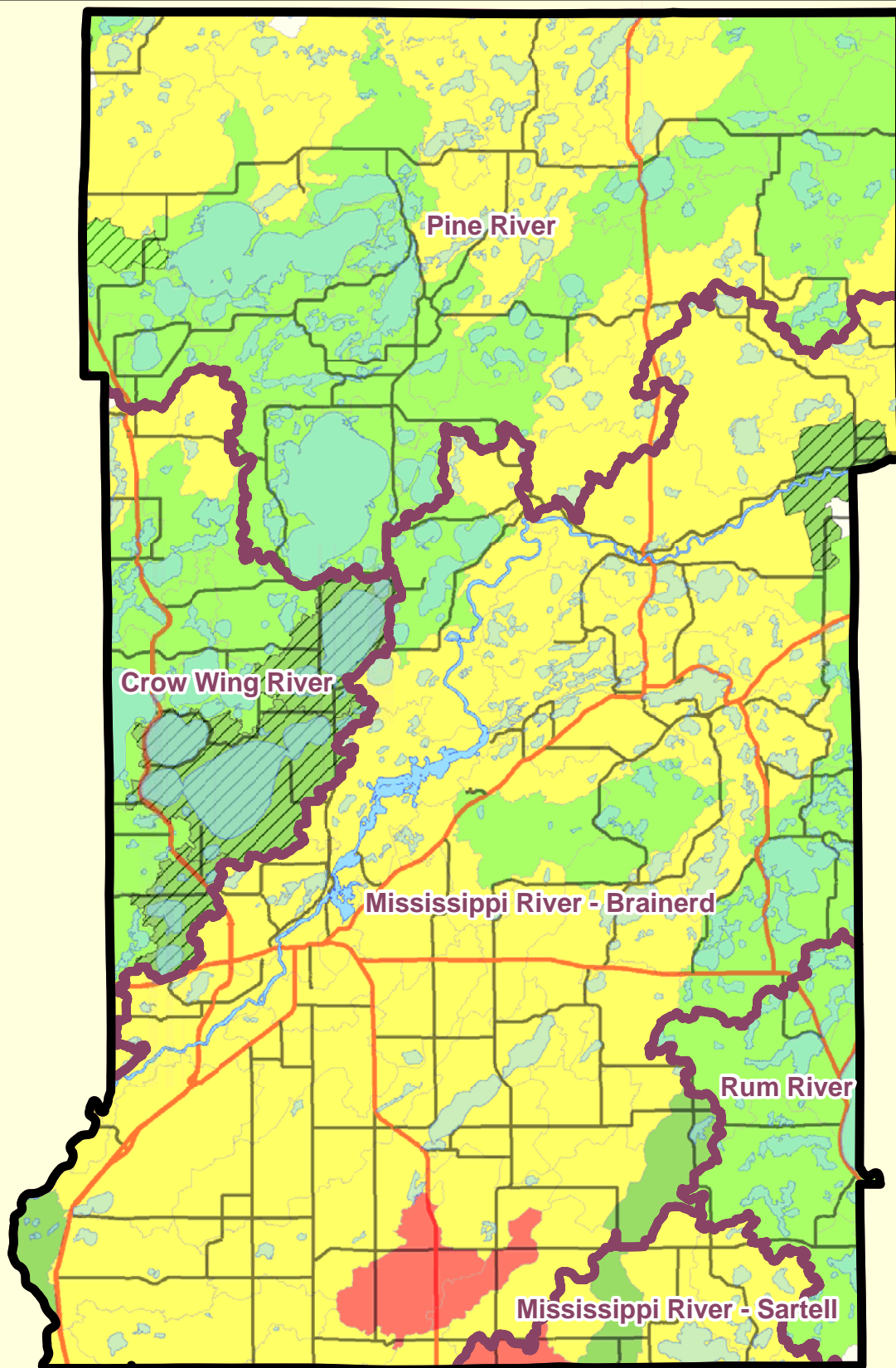
Figure 44: Implementation Priorities: Bluffs & Steep Slopes

**Average % Slope**

- 0 - 5 %
- 5 - 10 %
- 10 - 15 %
- 15+ %
- Major Watersheds

- Lakes
- Mississippi River
- US Highways
- State Highways
- County Roads



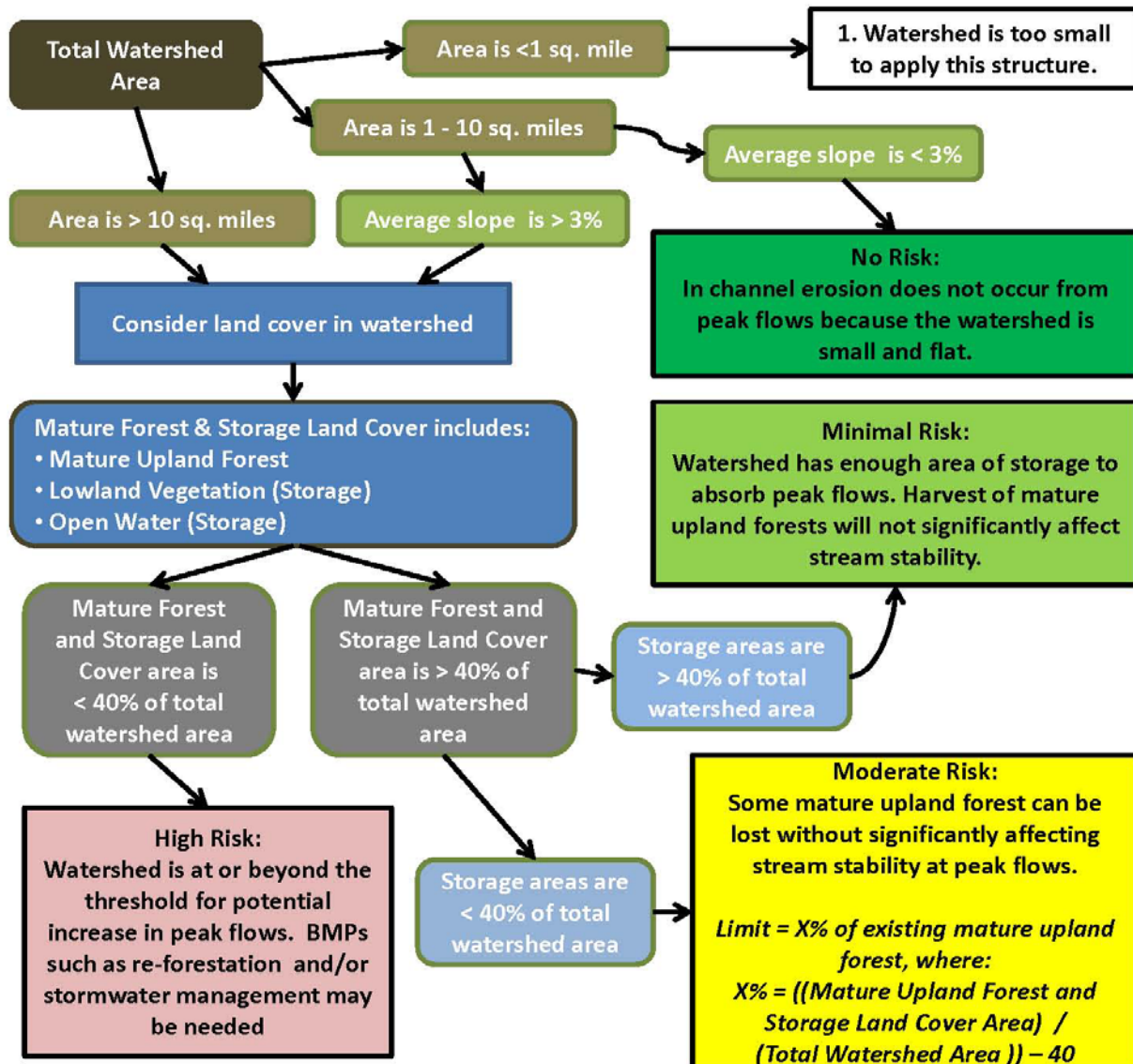


Model includes peak flows from spring snow melt and large rain events.  
 Land cover source: National Land Cover Dataset, 2006  
 Model developed by: Sandy Verry

Figure 45: Peak Flow Impacts on Stream Stability & Other CWC Ditching / Drainage Focus Areas

Figure 46. Peak Flow Model (from Sandy Verry)

**Sandy Verry Model for Assessing Stream Stability at Peak Flows in Relation to Forest Cover**



Composed by Jeff Reinhart  
Minnesota Forest Resources Council  
Funded by US Forest Service

Modified by Mitch Brinks  
Crow Wing County Land Services Department

Based on research from:  
Verry, Elon S. 2000. Land fragmentation and impacts to streams and fish in the central and upper midwest. In: Proceedings, Society of American Foresters 2000 national convention; 2000 November 16-20; Washington DC. SAF Publication 01-02. Bethesda, MD: Society of American Foresters: 38-44. Retrieved 1/14/13 from <http://nrs.fs.fed.us/pubs/2537>



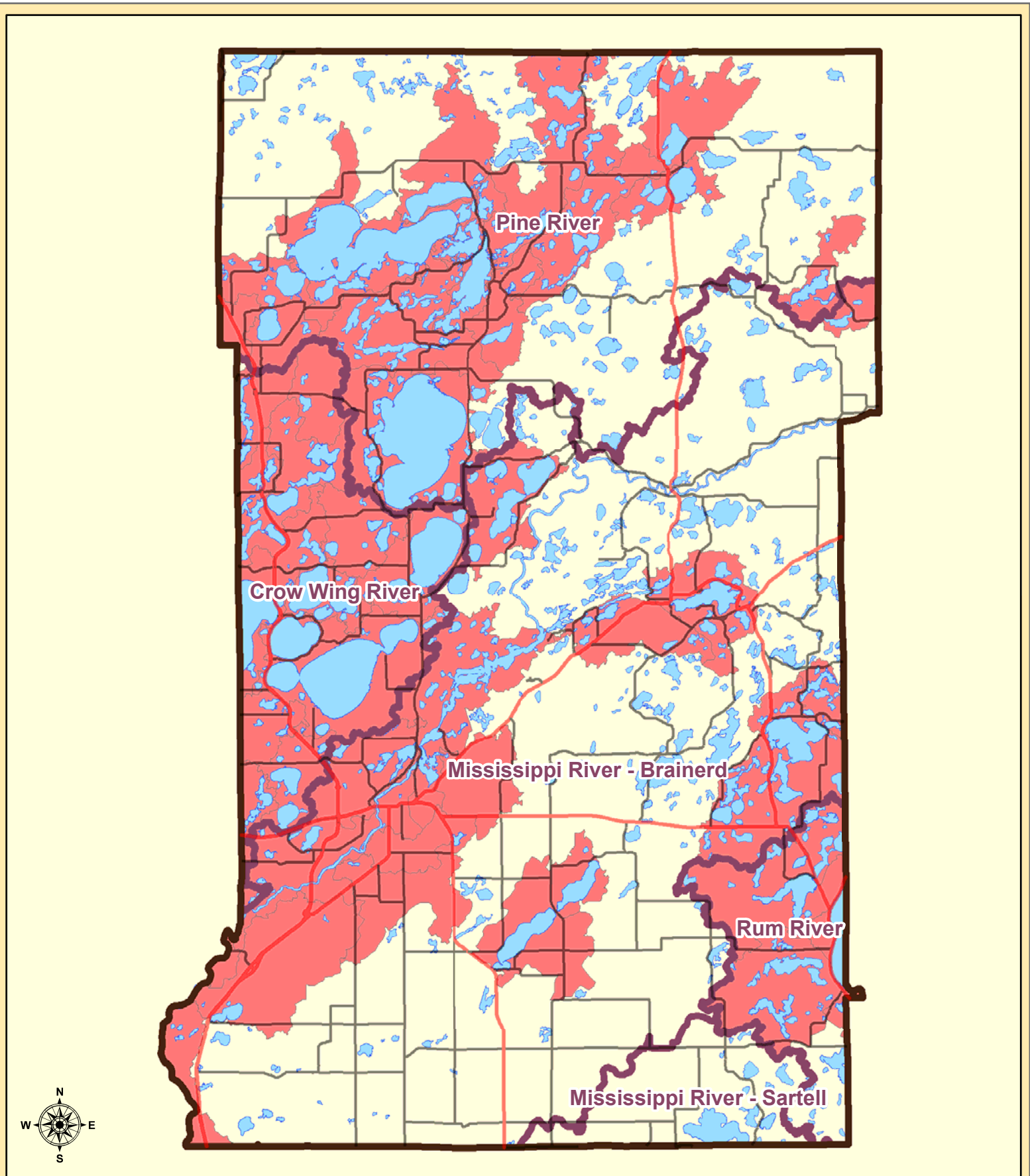


Figure 47: Implementation Priority: Growth & Development

- Development Priority Watersheds
- Major Watersheds
- Lakes
- Mississippi River
- US Highways
- State Highways
- County Roads

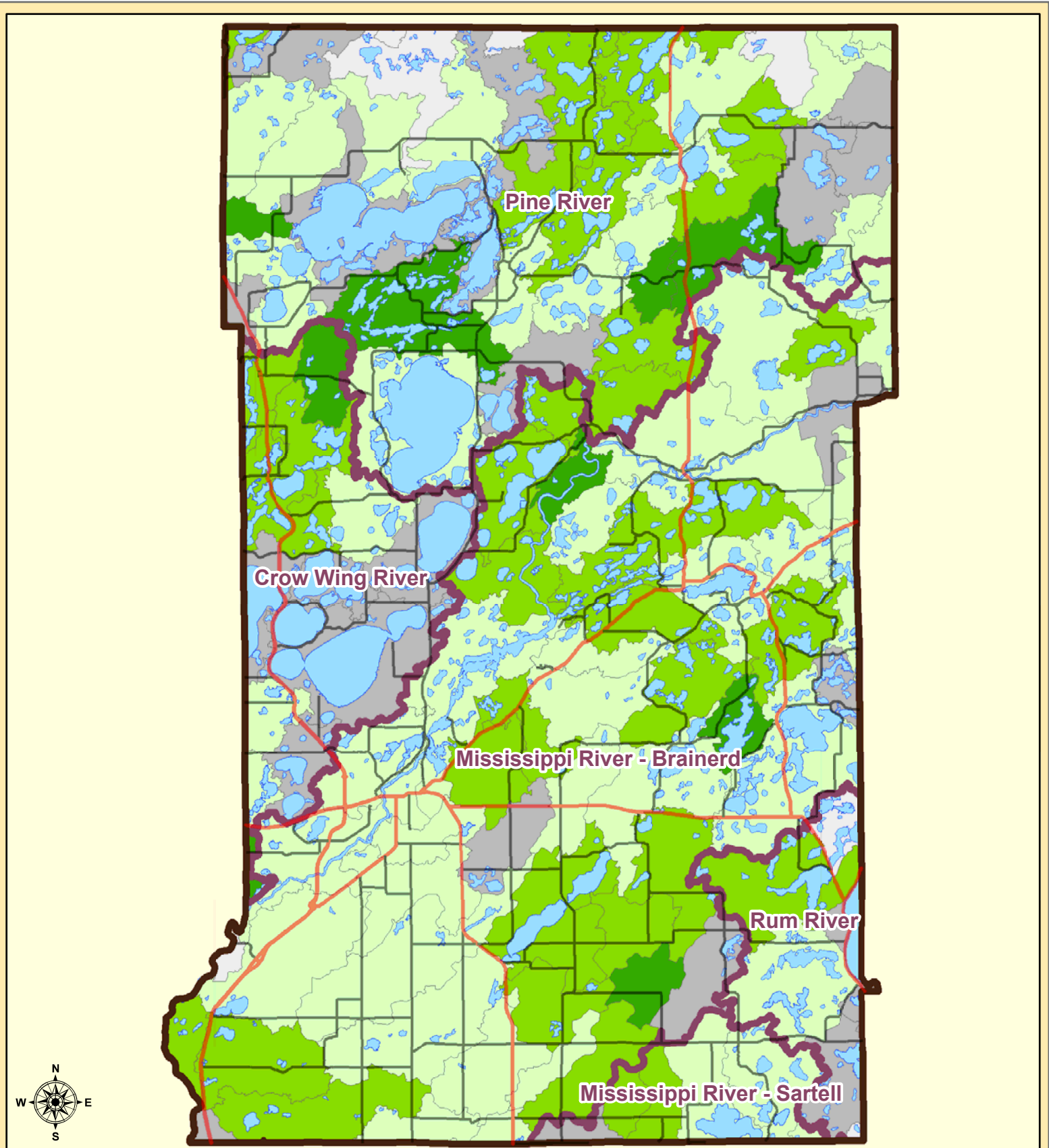


Figure 48: Implementation Priority: Private Forest Management

**Private Forest Priority Watersheds (by % private forest lands)**



Land Services

**CROW WING COUNTY**  
BRainerd, MINNESOTA 56401

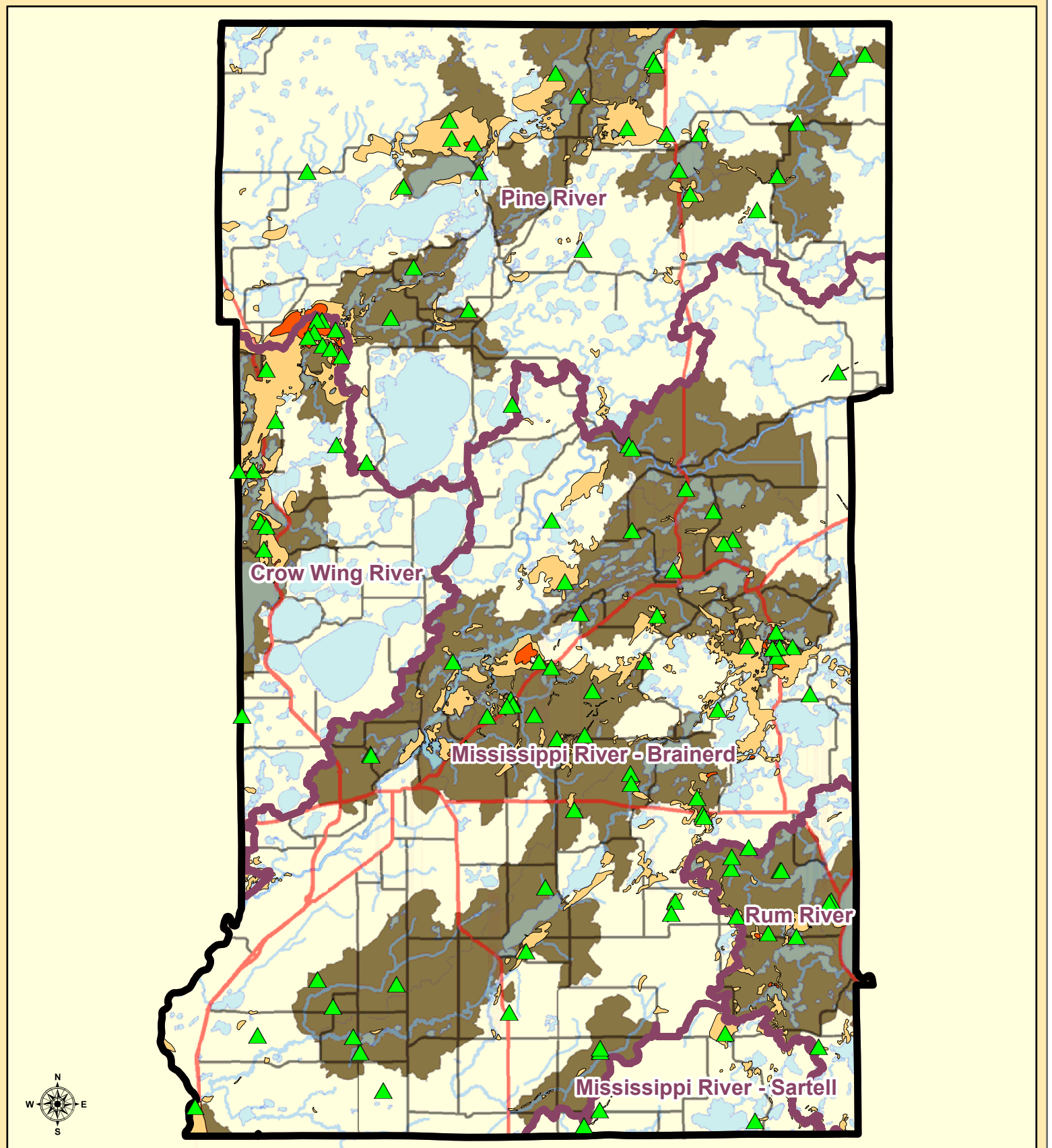


Figure 49: Extractive Uses



Land Services

**CROW WING COUNTY**  
BRainerd, MINNESOTA 56601