

PORTAGE LAKE TRAIL

PROPOSED TRAIL DEVELOPMENT PROJECT

**Part of SW1/4 SW1/4 and part of Gov. Lot 7,
Section 8, Township 46, Range 29 (Irondale Township)**

**Crow Wing County Land Services
February 21, 2013**

Summary of Trail Proposal:

Pursue development of a modern day portage and water based trail from the Mississippi River near Riverton, MN to Portage Lake for canoeists and kayakers so they may learn and understand the early history of the area while providing outdoor recreation and protection of the natural environment. The long range goal is to connect up to 5 miles of water travel and portages from the Mississippi River to Mahnomen and Turner Lakes. This water trail and portage route is a locally historic travel route used by Native Americans and trappers over 300 years ago to travel by water from the Mississippi River to Mille Lacs Lake. In 2010, Jack McAllister of Riverton brought the trail proposal to the attention of Crow Wing County and the Comprehensive Recreation Trails Plan committee. The recently completed Comprehensive Recreation Trails Plan identifies the potential development of the proposed trail. The existing Little Rabbit Lake public access parking area can be used to access Little Rabbit Lake. A smaller parking area to accommodate 3-4 vehicles is proposed to be developed off Iverson Road in Irondale Township to serve users between Little Rabbit Lake to the west and Portage Lake to the east. A potential non-portage hiking trail (up to 500 feet in length) following an existing and lightly used hiking path may be improved off the portage route to give trail users a scenic view and overlook of Little Rabbit Lake and the nearby open water pond.

Scope of Project:

The project plan which emphasizes Phase 1 consists of 19 acres of Crow Wing County managed public land and 450 acres of public waterways utilizing lakes and navigable streams. One portage of 1,900 lineal feet is to be developed on county managed public land. The portage passes through a mature hardwood forest. This is the longest portage and is the first link to get the Portage Lake Trail started. Other portages are needed for the long range plan (future phases) to create a route from Portage Lake to June Lake and other lakes located within the Cuyuna Country State Recreation Area.

Trail development (Phase 1) is 2.1 miles (see Map #1).

Total trail development potential (future phases): 5-6 miles (see Map #2).

Summary of Trail Purpose and Intended Uses:

The purpose of this trail proposal is to create a water based travel route and develop a portage that follows the general route used hundreds of years ago by Native Americans. The water trail will use public waters and public land portage routes, when possible. The proposed future water trail phases will enter the boundaries of the Cuyuna Country State Recreation Area providing users with a unique recreational experience. The public will be allowed greater access into hard to reach lakes through the development of upland portages. Trail use opportunities include portages for canoeists and kayakers, fishing, hiking, birding, snowshoeing and non-groomed cross-country skiing. Mountain biking and recreational motorized use will not be an allowed or be a designated activity.

Summary of Trail Purpose and Intended Uses (continued):

Crow Wing County is home to many small to large inland lakes and major rivers offering motorized watercraft experiences, but is lacking small lake and narrow water trails for non-motorized watercraft. This proposed water based trail will provide for a designated, non-motorized water travel route.

Public hunting will continue to be allowed on the county managed public lands. Portage trails will be posted for the intended uses. Portage trail maps will be provided and maintained by county staff and/or volunteers.

Proposed Trail Development Plan:

- Develop standards for Phase I archaeological field review.
- Identify and flag specific location of proposed upland portage route.
- Hire and administer Phase I archeological work to be performed by archaeologist.
- Review and finalize documentation of Phase I archeological work.
- If necessary, complete additional archaeological work.
- Develop interpretive information and map displays.
- Construct portage trail according to plans that comply with archaeological recommendations.
- Develop parking area off Iverson Road.
- Sign Portage Lake Trail for designated uses.
- Install interpretive information and map displays.
- Submit news release to local media outlets to inform the public of the trail opportunity.

Signage and Enforcement:

Informational signs and trail maps showing trail location and other features will be installed identifying the designated uses of the proposed trail at parking areas and along the trail route. The upland portage route may be periodically patrolled by authorized law enforcement based on trail user counts and incidences reported such as any potential trespassing, non-designated uses or other potential use violations.

Proposed Trail Maintenance Plan:

Pruning of vegetation and removal of deadfalls on the identified portage route will be performed by county personnel and/or volunteers. Trail maintenance shall be monitored and performed periodically. Where erosion may occur as a result of maintenance or foot traffic, repairs will be made in a timely manner to repair and reduce future erosion potential. Generally, maintenance will be by foot travel using hand tools.

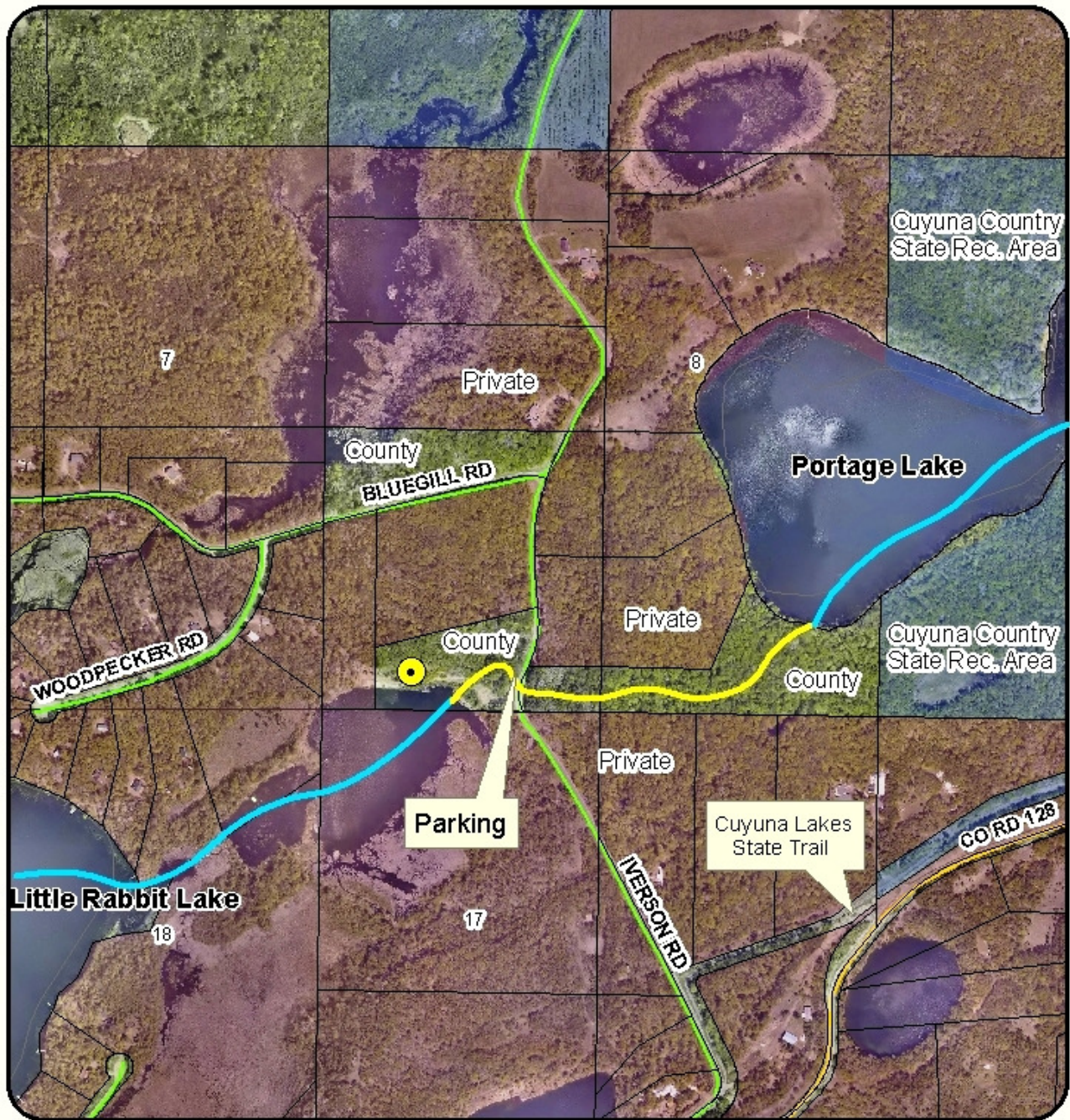
The proposed trail maintenance plan schedule is identified below:

Trail Maintenance Plan Schedule (*ie. clearing, signage, etc.*)

	Jan	Feb	Mar	Apr	May	Jun	Jul	Aug	Sep	Oct	Nov	Dec
Clearing				X		X		X		X		
Signage maintenance				X		X		X		X		
General Maintenance				X		X		X		X		

Annual maintenance will be ongoing throughout the open water season (April - October).

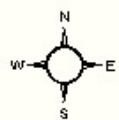
Portage Lake Trail - Upland Portage Area



0 390 780 1,560 Feet

Map 1

1 inch = 667 feet



Water Trail Route

Upland Portage Route (Phase 1)



Proposed Overlook

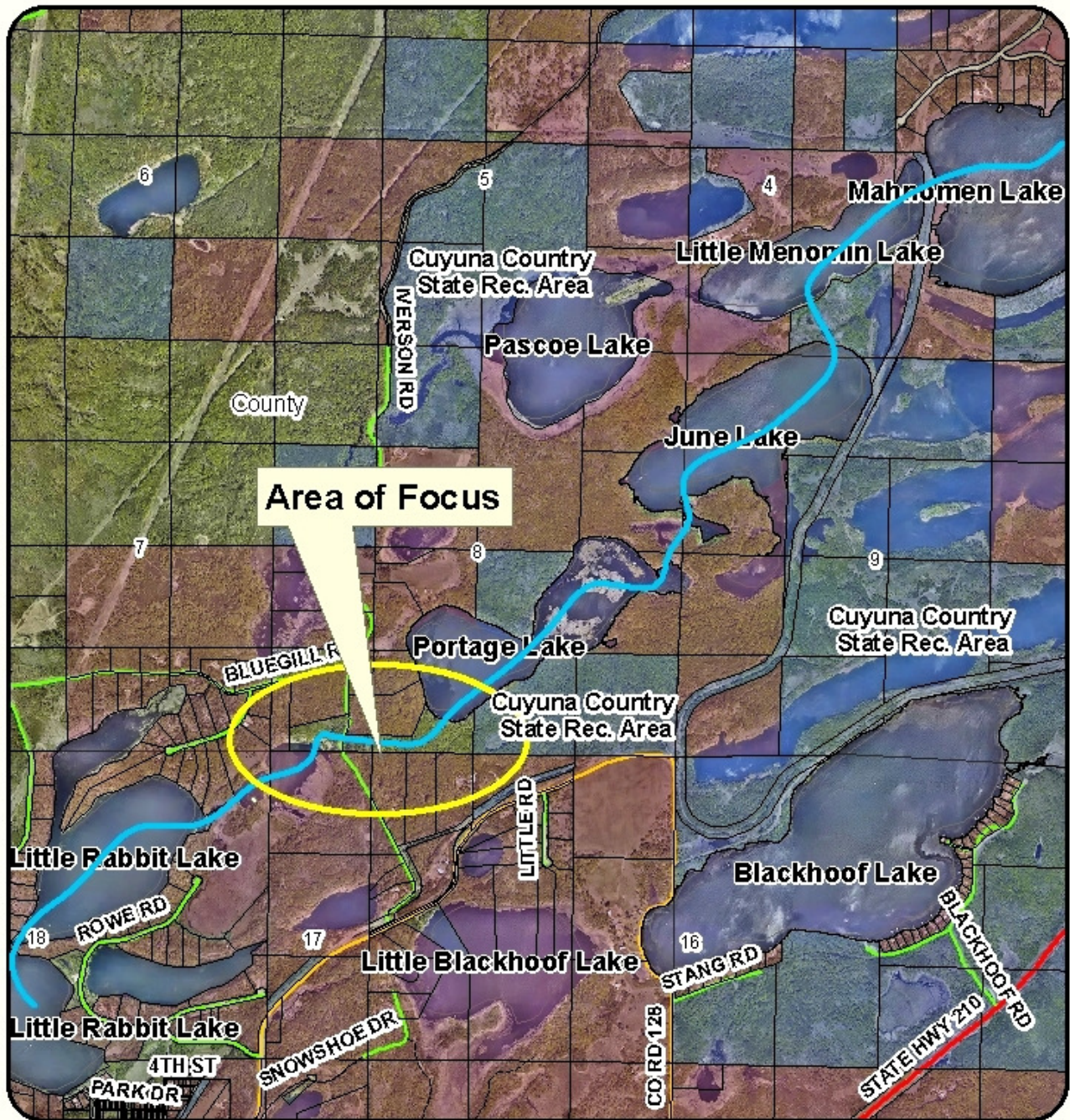
Crow Wing County
Land Services
322 Laurel Street, Suite #12

For non-legal, reference use only

218-824-1115

February 2013

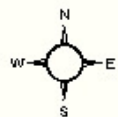
Portage Lake Trail - General Area



0 1,050 2,100 4,200 Feet

1 inch = 1,833 feet

Map 2



Historic Water Trail Route

Crow Wing County
Land Services
322 Laurel Street, Suite #12

For non-legal, reference use only

February 2013

218-824-1115