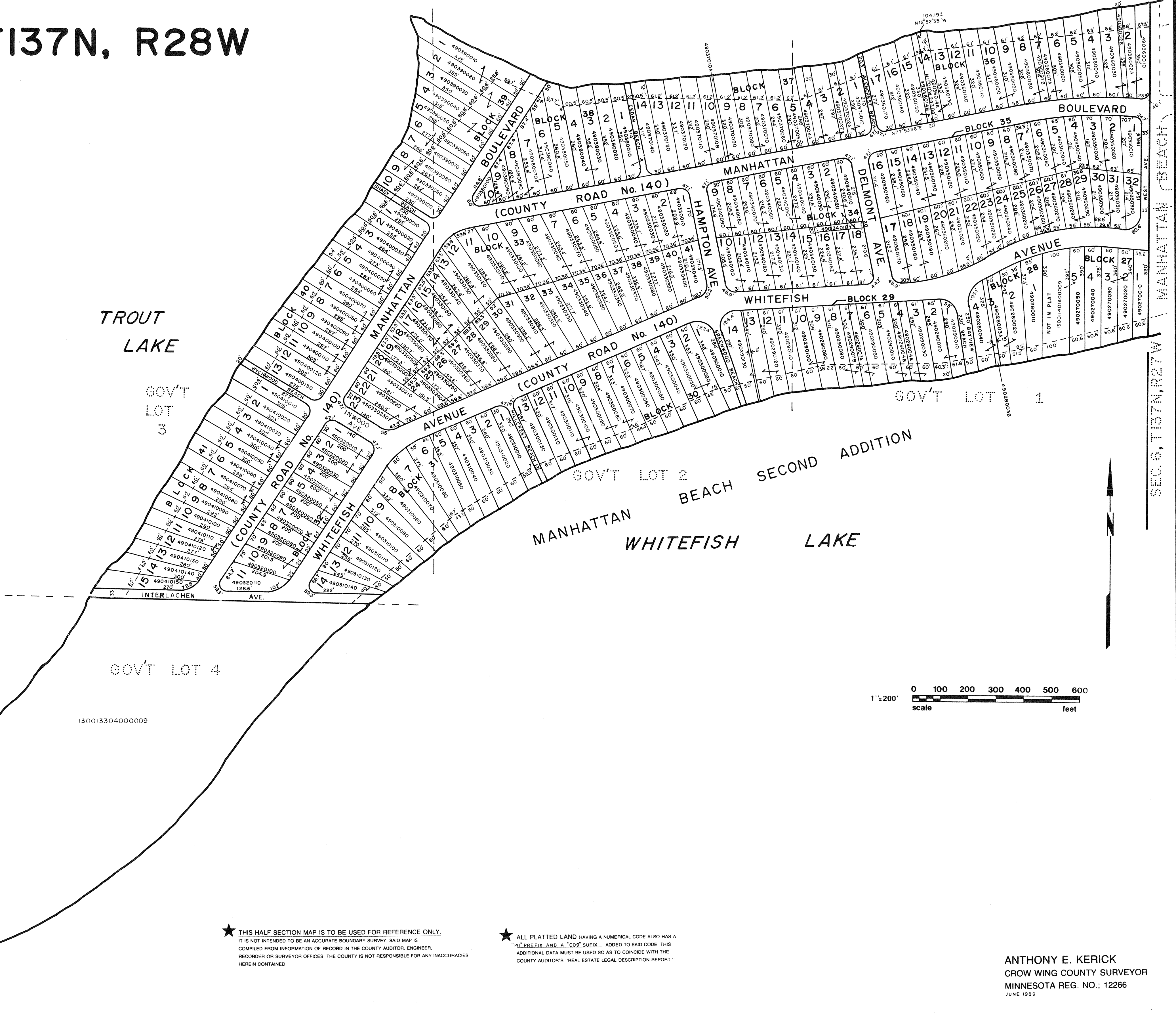


# SECTION 1, T137N, R28W



★ THIS HALF SECTION MAP IS TO BE USED FOR REFERENCE ONLY.  
IT IS NOT INTENDED TO BE AN ACCURATE BOUNDARY SURVEY. SAID MAP IS  
COMPILED FROM INFORMATION OF RECORD IN THE COUNTY AUDITOR, ENGINEER,  
RECORDER OR SURVEYOR OFFICES. THE COUNTY IS NOT RESPONSIBLE FOR ANY INACCURACIES  
HEREIN CONTAINED.

★ ALL PLATTED LAND HAVING A NUMERICAL CODE ALSO HAS A  
"4" PREFIX AND A "009" SUFFIX. ADDED TO SAID CODE. THIS  
ADDITIONAL DATA MUST BE USED SO AS TO COINCIDE WITH THE  
COUNTY AUDITOR'S "REAL ESTATE LEGAL DESCRIPTION REPORT."

ANTHONY E. KERICK  
CROW WING COUNTY SURVEYOR  
MINNESOTA REG. NO.: 12266  
JUNE 1989