



One Watershed One Plan

Citizen Advisory Committee Meeting Report
January 24, 2023

Attendees

Brainerd Attendees (Crow Wing Land Services Building):

Bethany Chaplin, Crow Wing SWCD
Bob Karls, Northern Waters Land Trust/Cedar Lake Conservancy (Aitkin)
Camille Warzecha, Morrison County Historical Society (Morrison)
Chris Pence, BWSR
David Smith, Serpent Lake Association (Crow Wing)
Jeff Hrubes, BWSR
Kathleen Maloney Hermerding Crow Wing Lake (Crow Wing)
Lance Chisholm, Morrison SWCD
Mike Stocken, Sebie Lake (Crow Wing)
Moriya Rufer, Huston Engineering
Pat Murphy, Aitkin Lakes and River Association (Aitkin)
Rick Peterson, Crow Wing Lake (Crow Wing)
Shannon Wettstein, Morrison SWCD
Tad Erickson, Region 5
Tom Gustafson, Sebie Lake (Crow Wing)

Long Prairie Attendees (Todd County Court House):

Adam Ossefoort, Todd County
Deja Anton, Todd SWCD District Manager
Josh Votruba, Todd SWCD technician
Lee Buchholz, SWCD Supervisor and crop farmer
Dr. Van Gorp, Burnhamville TWP, sheep and beef farmer
Lee Daly, Swan Lake
Eugene Hollermann, Burnhamville TWP, Beef farmer
Rick Jones, Lake Beauty
Rick Baum, Jr. Bruce TWP beef farmer
Steve Brown, Long Lake
Rick Baum, Sr.- filling in for Loren Vetch- of Little Elk TWP, farmer

Online Attendees

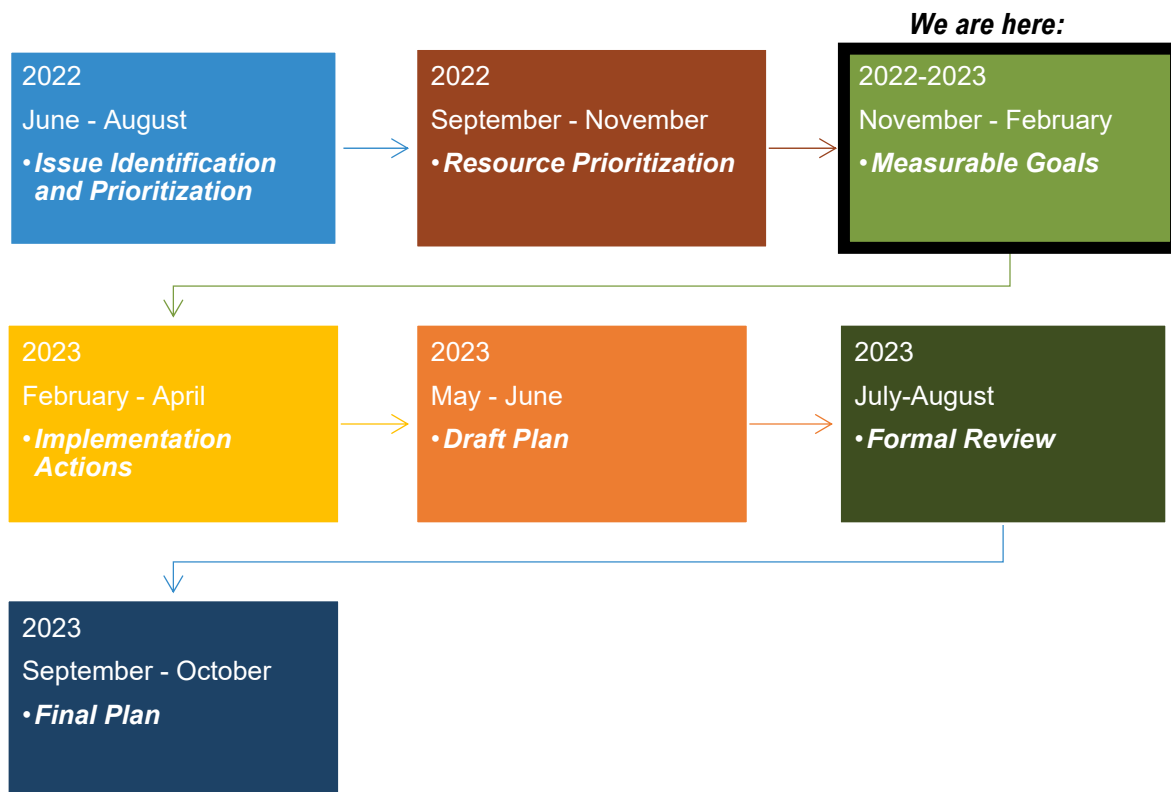
Adam Ossefoort, Todd County
Deja Anton, Todd SWCD
Ed Kees, Pine-Cedar Lakes Association (Morrison)
Tony Coffey, WAPOA (Crow Wing)
Mitch Brinks, TSA 8
Todd County- Get list from Deja
Kathy Boeckmann, Lake Beauty (Todd)
Austin Jeannette, BWSR

Meeting Purpose

The purpose of the Citizen Advisory Committee (CAC) meeting was to brainstorm actions for improving natural resources in the watershed.

Timeline

This graphic is a simplified version of the overall timeline. This timeline is a general guide, and the process can be adapted to fit as we go.



Welcome and Introduction

Attendees were welcomed and each attendee introduced themselves. A short recap of the watershed location was also presented. Counties included in the planning area are Aitkin, Crow Wing, Todd, and Morrison. Major cities include Aitkin, Brainerd, Baxter, and Little Falls (Figure 1).

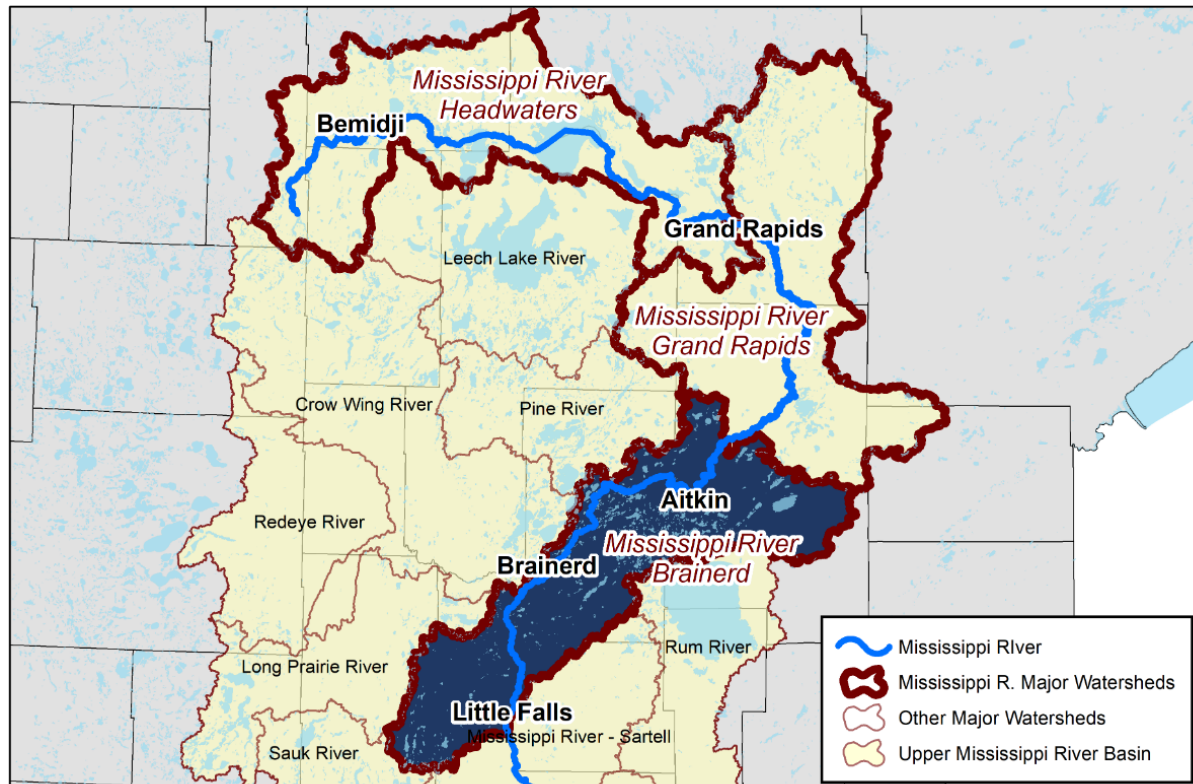


Figure 1. Mississippi River - Brainerd watershed location.

In addition, the committees and roles for the planning effort were presented. The Citizen Advisory Committee is advisory to the process and provides local priorities.

Committees and Roles



Recap of last CAC Meeting

The results from the last CAC meeting held in July 2022 were summarized. This information can be found in the meeting report on the Crow Wing County website: https://crowwing.us/DocumentCenter/View/19343/Mississippi-River-Brainerd_CACmeetingReport_7-26-2022?bidId=

Develop Plan Actions

The main purpose of this meeting was to develop actions for the plan. The draft goals were presented, and the participants split into small groups to brainstorm actions and record them on worksheets. The actions developed are summarized at the end of this report.

These actions will be used as the starting point for the Technical Advisory Committee when they develop plan actions in March and April 2023.

Next Steps

The next CAC meeting will be held in June or July. At that point, the plan will be in draft form.

Directions

- Brainstorm actions that fit under the goals provided.
- Include both project and outreach actions.



Phosphorus Reduction: *reduce phosphorus (lbs) in priority lakes and streams*

Action	Who is responsible?	How would we measure progress?
Alternatives to lawns around lakes	SWCDs	
Give away native grass and seeds	SWCDs	
Shoreline restoration	SWCDs	
Identify high phosphorus areas and mitigate		
Education and outreach	SWCDs	
Stormwater management that carries phosphorus and other pollutants	SWCDs, Cities, MNDOT, Counties	
Reduce fertilizer		
Reduce agricultural runoff		
Compliant sewer systems		
Reduce golf course fertilizer		
Utilize vegetated buffers along waterbodies on Ag land and shoreline properties		
Lake association education on what people can do in their own yards		
Partner with Ducks Unlimited, Deer Hunters Assoc., Realtors, Contractors (septic, landscape) on Outreach		
Promote water quality monitoring by lake associations and volunteers	SWCD, Lake Associations	# sites sampled
Identify phosphorus point sources into lakes and streams		
Cost share for practices		
Runoff/stormwater diversion, capture, filtration to avoid input to lakes and streams	Municipalities	# of projects
Educate on the amount of phosphorus in things like fertilizer and grass clippings	Community Groups	
Identify main sources of phosphorus inputs to lakes	Associations, LIDs	Water quality testing
Education of sources and impacts	Community groups, Lake Associations, SWCDs	# of postcards, workshops, press releases
Adopt a Highway	Lake Associations	

Directions

- Brainstorm actions that fit under the goals provided.
- Include both project and outreach actions.



Stormwater Management: *treating stormwater before it reaches the water bodies*

Action	Who is responsible?	How would we measure progress?
Rain gardens		
Stormwater management	Cities, County, MNDOT, SWCD	
American Peat Technology (s. of Aitkin) to remove oils and parking lot pollutants in stormwater		
Culvert management, make sure they are operating correctly (size, elevation)	County, SWCDs, Townships	
Fix runoff from roofs and roads		
Install gutters and directional flow to buffer collection area		
Data Gap: Future growth plans for the area (residential, commercial, economic development authority)		
Stormwater Practices in Cities		
Stabilize gully areas and retain upslope water		
Install native buffers		
Road ditches		
Stencil storm water inlets	Cities, Civic groups	Map out % done
Manage city removed snow and chemical runoff in spring	Cities	
Street sweeping	Cities	
Stormwater management in commercial parking	Businesses, Cities	Permits and compliance

Directions

- Brainstorm actions that fit under the goals provided.
- Include both project and outreach actions.



Land Protection: *adding acres of forest management and land protection*

Action	Who is responsible?	How would we measure progress?
Conservation Easements		acres
Sustainable Forest Incentive Act (>20 acres)		acres
Forest Stewardship Plan (>20 acres)		acres
Reinvest In Minnesota Program		acres
Outreach via mail, newspaper, social media		
Government offices, boards		
Network with people, have someone who has done these programs do the outreach		
Finding the right people that have local networking connections		
Planting trees		
CRP adjacent to streams		
Wetland restoration and Wetland Reserve Program		
Forest and grazing combo- rotational		
RIM wetlands and prairie potholes		
Minnesota Timber/Logging Association (out of Cloquet) – education for Arborists, loggers		
Convert unused Ag land to forest for timber management and carbon sequestration	DNR, SWCD	acres

Directions

- Brainstorm actions that fit under the goals provided.
- Include both project and outreach actions.



Riparian Stabilization: feet and miles of streambank and lakeshore stabilization

Action	Who is responsible?	How would we measure progress?
Outreach like goal above		
Education, shoreline restoration seminar, help people past the hurdle of getting started		
Site visits for possible projects	SWCDs	Number of visits
How much shoreline is there in the watershed?		
Soft armor		
Stabilize gullies and capture upslope water		
Coir logs, willow waddles	Lake Associations and Land Owners	
More County and DNR enforcement	County, DNR	
Incentivize lakeshore owners to develop natural shorelines	SWCD, landowners	Feet of shoreline
Dampen the high and low fluctuations by storing water during excessive rains	Private property	
Bogs, Berms, installation promotion	Private property	# of installments

Directions

- Brainstorm actions that fit under the goals provided.
- Include both project and outreach actions.



Agricultural Land Management: *acres of Agricultural BMPs*

Action	Who is responsible?	How would we measure progress?
Cost share incentives	SWCDs	
Outreach by word of mouth		
Filter strips	SWCDs, NRCS	
Grazing management plans, fencing and water sources	SWCDs, NRCS	acres
Inventories of feedlots	SWCDs	
MAWQ Program	NRCS	
Education on farming right up to roads, marginal lands	SWCDs, NRCS, local county boards	
Regular testing of creek runoff at Long Lake with an impaired inlet and outlet and connection to Big Swan Lake which is impaired.	MPCA/LGU (not Lake Associations)	
Ordinance-No feedlot increase allowances if you have a record of violations		
Problems can be solved through knowledge		
Silage leachate issues and control		
Filter Strips		
Windbreaks		
Manure pit closures		
Cover crops		
Feedlot (Mgt? or maintenance?) / Feedlot Reconstruction		
Grassed waterways		
Water and sediment control basins		
Nutrient management		
Buffers		
Proper plant selection		
Encourage more crop rotation		acres

Directions

- Brainstorm actions that fit under the goals provided.
- Include both project and outreach actions.



Drinking Water Protection: *both private and public drinking water sources*

Action	Who is responsible?	How would we measure progress?
Sealing unused wells	SWCDs	Wells sealed
Upgrade failing Septic systems	County	# systems
Survey and inspection of septic systems	County	By lake or priority area
Outreach and data collection: provide free well testing kits	SWCDs	
Wellhead protection outreach for private landowners	SWCDs	
Chloride runoff	SWCDs, Counties	
Water softeners affecting septic systems and city WWTPs		
Outreach through Lake Associations, WAPOA, LIDs, newsletters, speakers at meetings		
Septic tank education (no additives)		
Issue: leakage from pipelines? Do they have a plan for that and are they monitoring? Response Plan for leaks.		
Cover crops	SWCDs, NRCS	acres
Irrigation management		
Grass cover		
Manure pit closures		
Manure spreading improvements		
Well head protection plan implementation	City	
Snow (chloride, PAH, TSS) management	City and County	Cl and TSS testing

Directions

- Brainstorm actions that fit under the goals provided.
- Include both project and outreach actions.



Water Retention: *acre-feet of water storage*

Action	Who is responsible?	How would we measure progress?
Wetland protection and restoration		
Helping farmers manage pastureland (perennial plants with deep roots)		
Peatland restoration to retain more water		
Rain gardens		
Water and sediment control basins		
Road projects that incorporate storage		