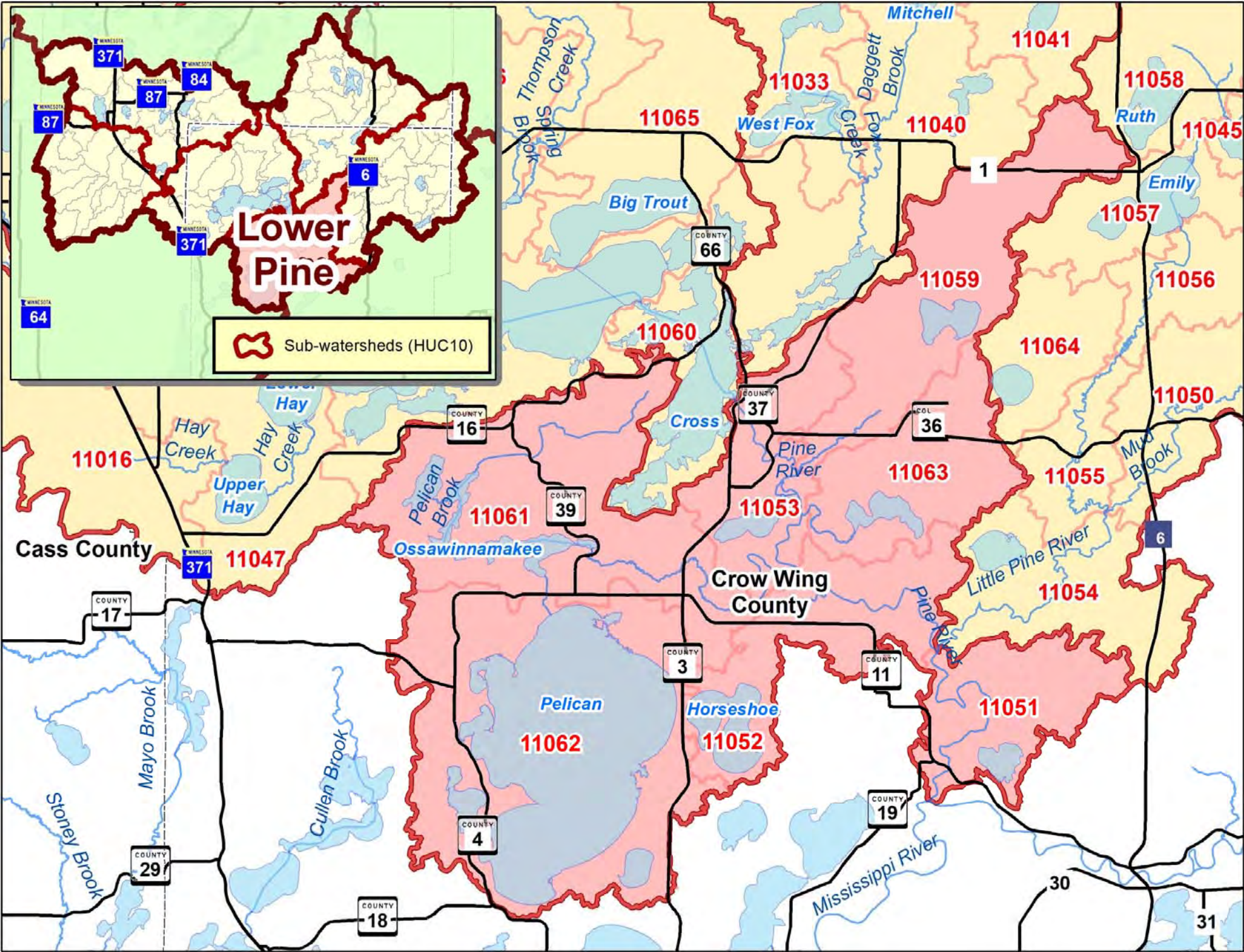


Lower Pine River Sub-watershed

Minor Watershed #	Minor Watershed Name
11051	Pine River / Fool Lake
11052	Pine River / Horseshoe Lake
11053	Pine River / Big Pine Lake
11059	Goodrich / O'Brien Lakes
11061	Lake Ossawinnamakee
11062	Pelican Lake
11063	Greer Lake



Basics			Risk / Disturbed					Outstanding Surface Water Resources	Protection					Forests / Biodiversity / Potential Native Plant Community System								
Minor #	Acres	Sq Miles	Risk Factors	Lake Phosphorus Sensitivity	Average % Slope	% Altered Water- courses	% Land Disturb- ance		DNR Lake Protection Classification*	% Protected	Land Value / Ac (20+ ac parcels)	Acres Needed for 75%	Potential to Protect (ac)	% Forest Cover	% Forest Steward- ship Plans	FFF Composite Mean Score	Terrestrial Biodiversity	% Fire Dependent (FD)	% Mesic Hardwood (MH)	% Wet Meadow (WM)	% Other Systems	
11051	4,919	8		High	10.9%	0.0%	14%	Lakes of Biodiversity Significance	Protection	66%	\$1,302	460	1365	<div><div>52%</div></div>	<div><div></div></div> 8%	73.9	Moderate	<div><div>22%</div></div>	<div><div>44%</div></div>	<div><div>8%</div></div>	<div><div>21%</div></div>	
11052	6,562	10		Highest	7.1%	0.0%	15%		Protection / Vigilance	78%	\$1,323	Goal Met	1499	<div><div>42%</div></div>	<div><div></div></div> 4%	76.9	Moderate	<div><div>60%</div></div>	<div><div>12%</div></div>	<div><div>9%</div></div>	<div><div>4%</div></div>	
11053	5,025	8		High	8.6%	0.0%	20%	Lakes of Biodiversity Significance, Wild Rice	Protection	49%	\$991	1330	866	<div><div>42%</div></div>	<div><div></div></div> 2%	88.9	Moderate	<div><div>52%</div></div>	<div><div>26%</div></div>	<div><div>9%</div></div>	<div><div>2%</div></div>	
11059	8,354	13		Higher	8.1%	0.0%	9%	Lakes of Biodiversity Significance, Wild Rice	Protection	54%	\$1,470	1756	2333	<div><div>51%</div></div>	<div><div></div></div> 16%	89.0	Moderate	<div><div>46%</div></div>	<div><div>27%</div></div>	<div><div>9%</div></div>	<div><div>4%</div></div>	
11061	12,893	20		Higher and Highest	12.9%	3.2%	13%	Cisco, Lakes of Biodiversity Significance, Trout, Wild Rice	Protection	34%	\$1,556	5298	3780	<div><div>50%</div></div>	<div><div></div></div> 13%	91.9	Moderate	<div><div>44%</div></div>	<div><div>31%</div></div>	<div><div>7%</div></div>	<div><div>2%</div></div>	
11062	17,816	28	Feedlots (1)	Higher and Highest	6.0%	68.2%	12%	Lakes of Biodiversity Significance, Wild Rice, Cisco	Protection	63%	\$1,138	2169	1867	<div><div>22%</div></div>	<div><div></div></div> 7%	86.1	High	<div><div>29%</div></div>	<div><div>14%</div></div>	<div><div>3%</div></div>	<div><div>1%</div></div>	
11063	5,518	9	Feedlots (1)	Higher	7.5%	0.0%	10%	Lakes of Biodiversity Significance, Wild Rice	Protection / Vigilance	63%	\$1,226	662	1378	<div><div>46%</div></div>	<div><div></div></div> 9%	87.2	Moderate	<div><div>53%</div></div>	<div><div>10%</div></div>	<div><div>10%</div></div>	<div><div>10%</div></div>	

Sub-watershed (HUC10): Lower Pine

Geomorphology: Outwash + some moraine till
Primary Land Cover: Mixed Conifer and Mesic-Hardwood Forest
Primary Land Uses: Water-based Tourism, Hunting/Recreation, Forestry
Lake or Stream Based: Lake
Quality: Numerous small to mid-size high quality lakes
Risks: Residential Development
Management Mode(s): Opportunism/Active
Acres Needed for Goal: 11,675 acres
Cost to Achieve Goal: \$11,669,133 Cost /minor watershed = \$1,667,019

Minor Watershed Summary			Resource Context / Management Goals								Managing for: <i>High Quality Resources</i>										Managing for: <i>Risk</i>						Managing by: <i>Implementation Focus / Applicable Tool</i>									
Minor Watershed #	Minor Watershed Name	Minor Wshd Acres	Lake or Stream Based	Protection Goal	% Protected	Acres Needed for 75%	Potential To Protect (ac)	Cost	Protection Framework (DNR)		Mgmt Mode	Forest Type (FD/MH)	Forests	Lakes	Streams/ Source-water	Ground-water	Fish Habitat	Wildlife Habitat	Other High Quality Habitat	Avg. RAQ Score	Private Lands: Large Tract	Private Lands: Shoreline <i>(small tract)</i>	Open Land Issues: Grazing, Hay/Pasture	Open Land Issues: Row Crops	Aquatic Threats (Phosphorus, Declining WQ Trend, Impaired)	Other Risk (Noted Below):	Forest Stewardship Plans, Advice	Grants and Cost-share Projects: Near-shore	Grants and Cost-share Projects: Watershed	Private Forest Management	Conveyance Systems	Local Land Use	Land Swaps / Trust Land Mgmt (Public Lands)	Incentive Programs (SFIA, 2C, CRP)	Conservation Easements	Fee Title Acquisition
11051	Pine River / Fool Lake	4,919	Lake/Stream	75%	66%	460	1365	\$450,233	Protection		Active	MH		X	X	?	X	?	Hig h Bio-diversity	3.3	X						X	X	X	X	?	X		X	X	Local Decision
11052	Pine River / Horseshoe Lake	6,562	Lake/Stream	75%	78%	Goal Met	1499	\$0	Protection	Vigilance	Opportunism	FD		X	X	X	X	?	?	3.1		X			X		X	X	X	X		X	X	X		
11053	Pine River / Big Pine Lake	5,025	Lake/Stream	75%	49%	1330	866	\$1,177,160	Protection		Active	FD/MH		X	X	X	X	X	Hig h Bio-diversity	3.85	X	X					X	X	X	X	X	X	X	X	X	Local Decision
11059	Goodrich / O'Brien Lakes	8,354	Lake	75%	54%	1756	2333	\$1,806,588	Protection		Active: Near-Shore Priority	FD/MH		X	X	X	X	X	Hig h Bio-diversity	3.85	X	X			X		X	X	X	X		X		X	X	Local Decision
11061	Lake Ossawinnamakee	12,893	Lake/Stream	75%	34%	5298	3780	\$5,586,940	Protection		Active: Large-Tract PFM Priority	FD/MH		X	X	X	X	X	Hig h Bio-diversity	3.25	X	X			X		X	X	X	X		X	X	X	X	Local Decision
11062	Pelican Lake	17,816	Lake	75%	63%	2169	1867	\$2,015,913	Protection		Active: Fisheries Priority	FD	X	X		X	X	X	Hig h Bio-diversity	3.65	X	X			X		X	X	X	X	X	X		X	X	Local Decision
11063	Greer Lake	5,518	Lake	75%	63%	662	1378	\$632,299	Protection	Vigilance	Opportunism	FD	X	X	X	X	X	X	Hig h Bio-diversity	3.85	X	X			X		X	X	X	X		X	X	X	X	Local Decision

Above is checked if FFF score is >94.7 (mean for Pine R. Watershed) or High/Outstanding, WM = Wet Meadow

MH = Mesic Hardwoods, FD = Fire Dependent, WM = Wet Meadow

X = if there is a discernable outlet to the watershed that would contribute surface water downstream

X = wellhead protection area or outwash soils are present

X = trout, cisco/tullibee, game fish, etc.

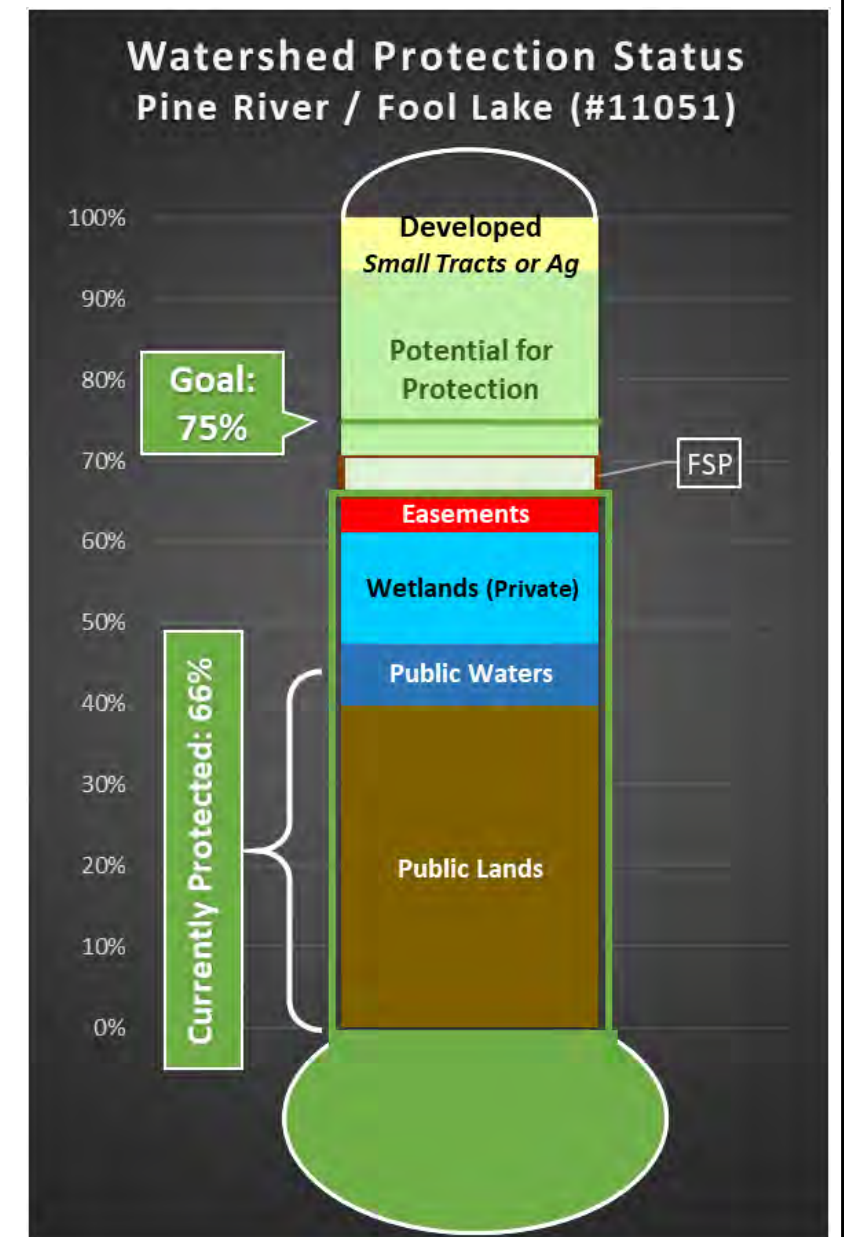
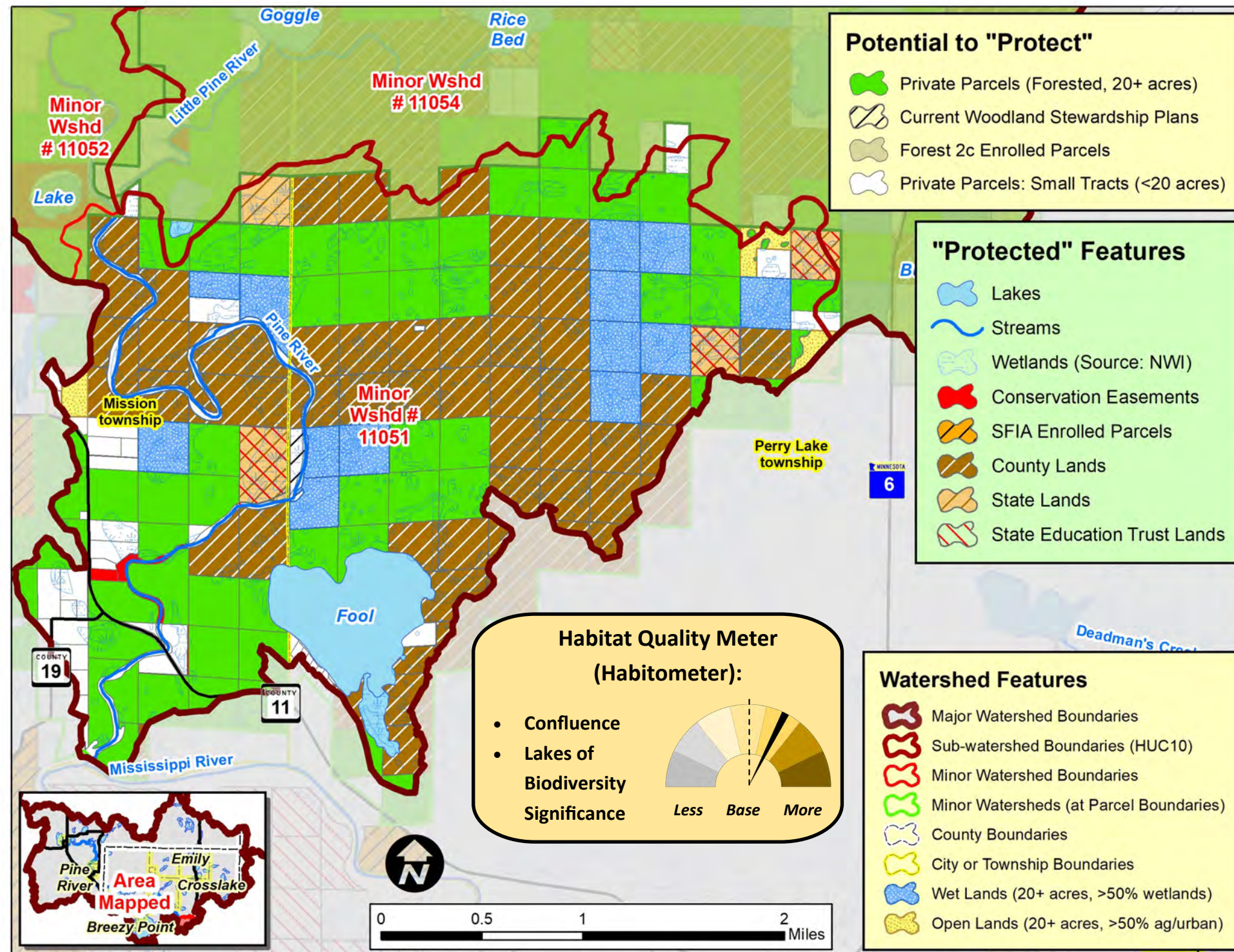
Score = Average Composite of Riparian, Adjacency, Quality across the wshd

X = High land use disturbance (>25%) or known grazing/cattle concerns

X = 'Higher' or 'Highest' Phos. Sensitivity Score OR Declining trend in water quality

B = Beaver Issues, C = Downcutting by Culverts, CH = channelization

What is the Potential to Protect the Pine River / Fool L. Minor Watershed (Minor 11051)?

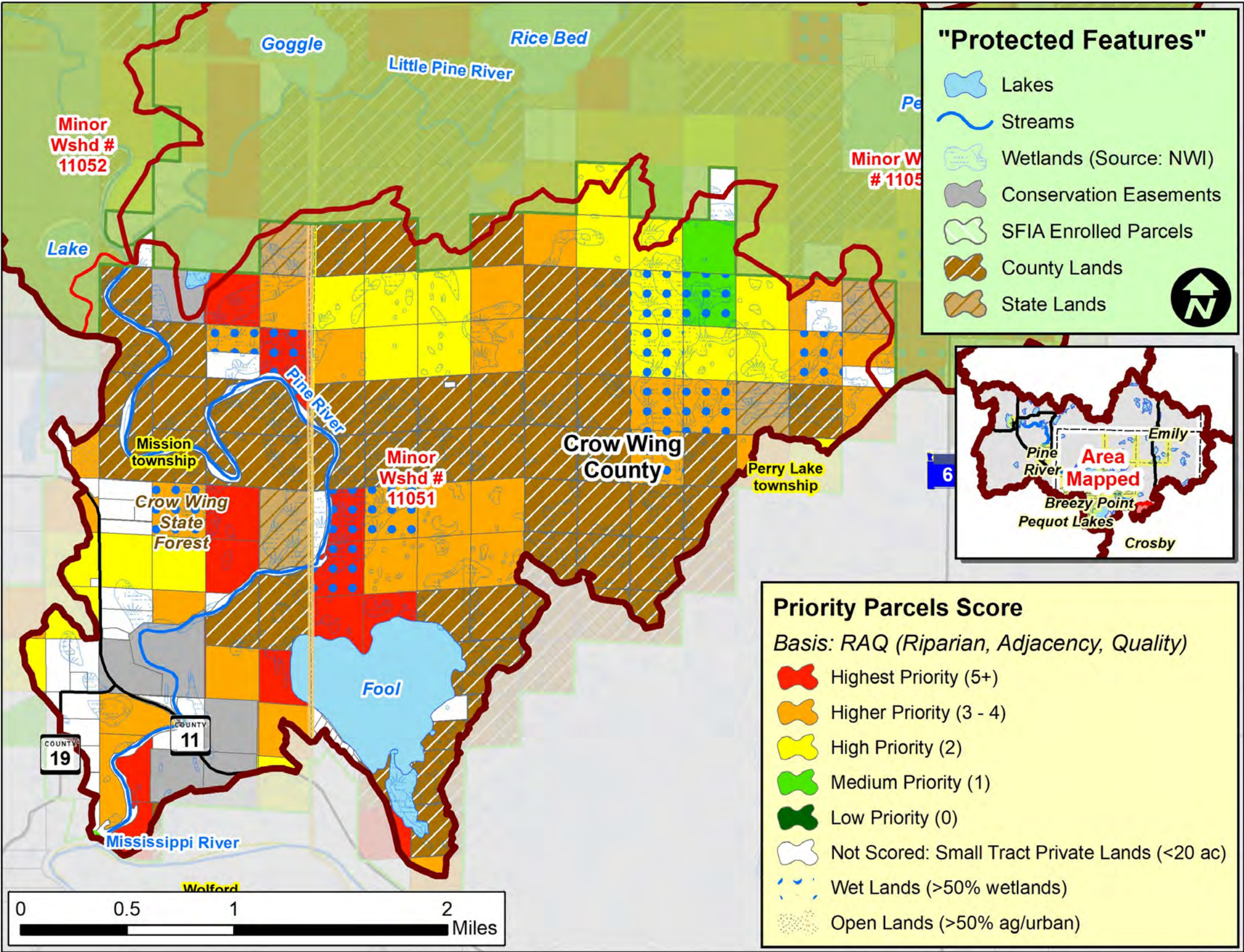


Implementation Toolbox

Plan It!	Improve It!	Manage It!	Buy It!
General Advice & Assistance <ul style="list-style-type: none"> Factsheets Poster / Mailers Workshops Website / Social Media 	Specific Advice & Assistance <ul style="list-style-type: none"> Plans: <ul style="list-style-type: none"> Landscaping Forest Stewardship Projects Site Visits 	Grants & Cost-share Projects <ul style="list-style-type: none"> Tree Planting Bud Capping Timber Stand Improvement (Thinning) Forest Management <ul style="list-style-type: none"> Timber Sales High Priority Areas: Clean Water/Habitat Fund 	Local Land Use <ul style="list-style-type: none"> Riparian Buffers Voluntary Site Level Guidelines Zoning & Official Controls Incentive Programs to Enroll Land <ul style="list-style-type: none"> SFIA 2C Forest CRP Conservation Easements <ul style="list-style-type: none"> Donated Purchased Fee Title Public Land Acquisition <ul style="list-style-type: none"> Federal State County

Lower Costs, Less Permanent Options Higher Costs, More Permanent

RAQ Scoring for Parcels in the Pine R. / Fool Lake Minor Watershed (Minor #11051)



Scoring Criteria:		
Riparian	3	Riparian
	2	Non-riparian: Shoreland (1 parcel back)
	1	2 parcels back
Adjacency	3	2 sides touching public land
	2	1 side touching public land
	1	One parcel removed from public land or touching parcel with SFIA or Easement
Quality*	3	1 point for each feature that the parcel touches: such as High or Outstanding Biodiversity (upl. or aqu.), Wild Rice L, Cisco L, Trout L/Streams, etc.
	2	
	1	

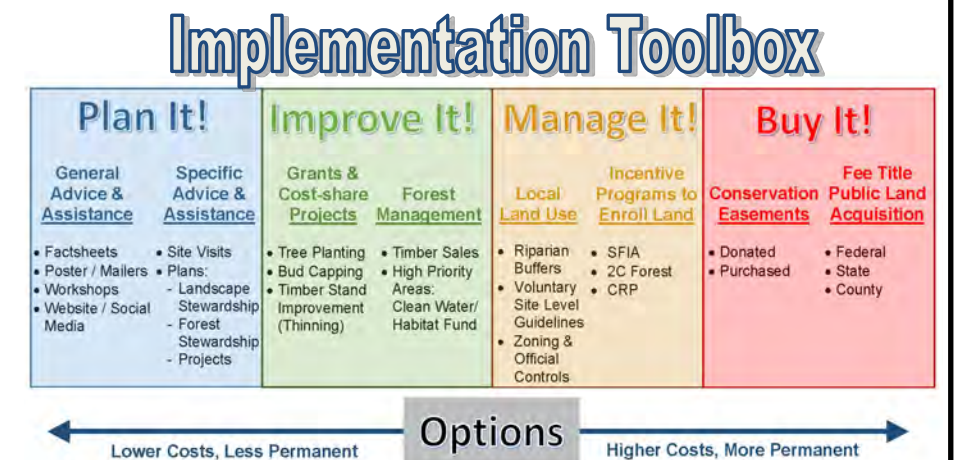
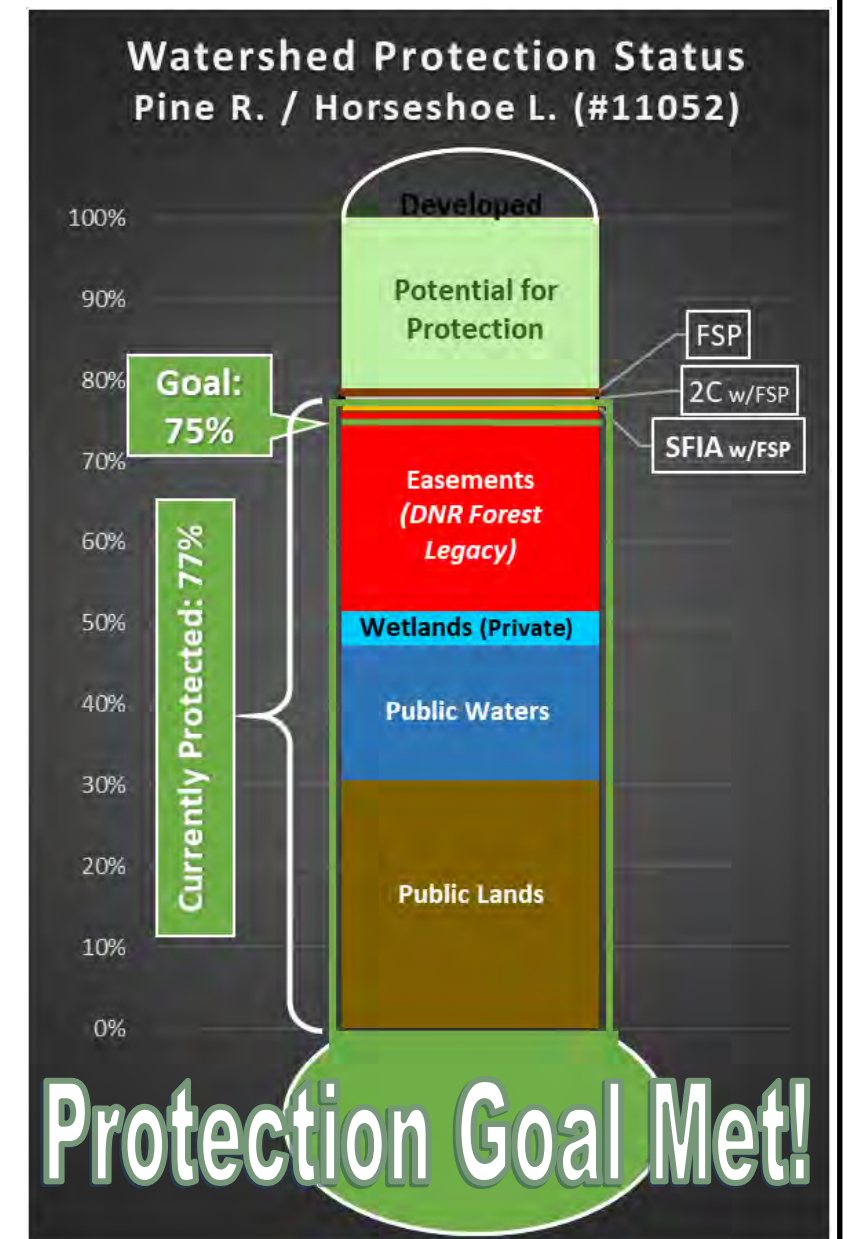
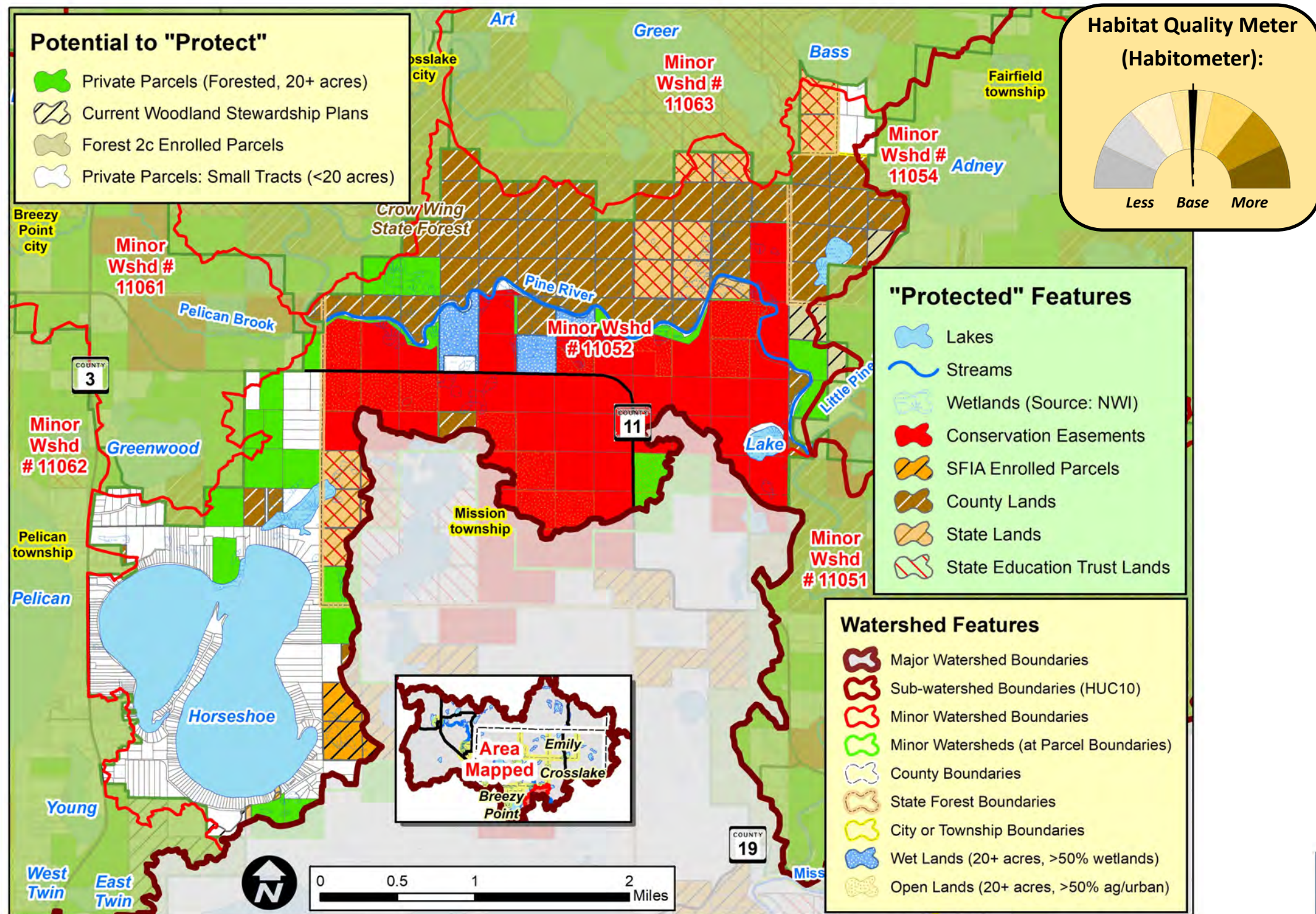
* Quality is locally determined and can include other features, including groundwater resources. For this project, quality also included:

- Outstanding Resource Value Resources (MPCA)
- Old Growth Forests (DNR)
- Lakes with Exceptional IBI Scores (DNR)
- Drinking Water Supply Management Areas (MDH)
- High or Outstanding Wildlife Action Network Score (DNR)

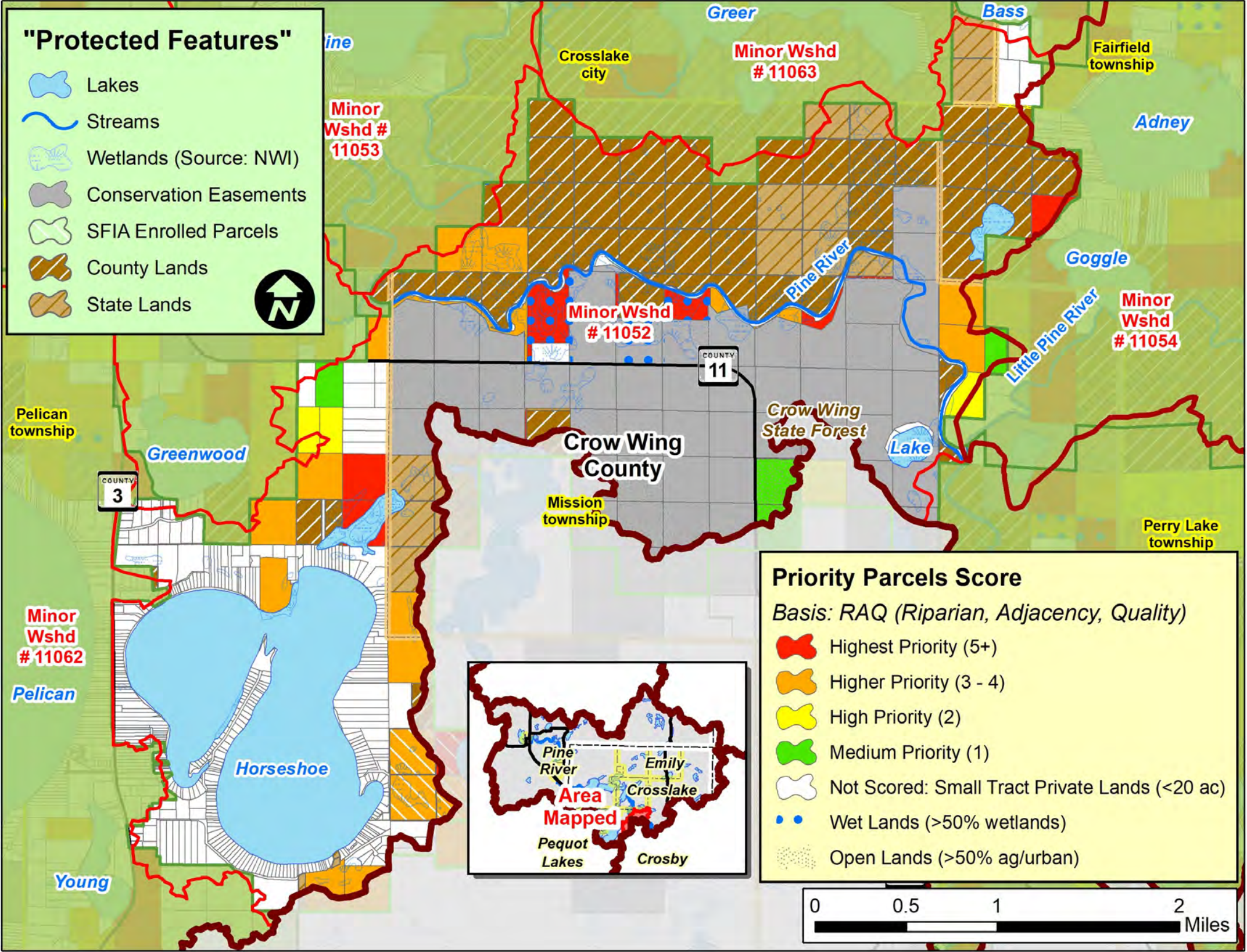
Implementation Toolbox

Plan It!	Improve It!	Manage It!	Buy It!
General Advice & Assistance <ul style="list-style-type: none">FactsheetsPoster / MailersWorkshopsWebsite / Social Media	Specific Advice & Assistance <ul style="list-style-type: none">Site VisitsPlans: Landscape Stewardship, Forest Stewardship Projects	Grants & Cost-share Projects <ul style="list-style-type: none">Tree PlantingBud CappingTimber Stand Improvement (Thinning) Forest Management <ul style="list-style-type: none">Timber SalesHigh Priority AreasClean Water/Habitat Fund	Local Land Use <ul style="list-style-type: none">Riparian BuffersVoluntary Site Level GuidelinesZoning & Official Controls Incentive Programs to Enroll Land <ul style="list-style-type: none">SFIA2C ForestCRP Conservation Easements <ul style="list-style-type: none">DonatedPurchased Fee Title Public Land Acquisition <ul style="list-style-type: none">FederalStateCounty
Options			
Lower Costs, Less Permanent		Higher Costs, More Permanent	

What is the Potential to Protect the Pine R. / Horseshoe L. Minor Watershed (Minor 11052)?



RAQ Scoring for Parcels in the Pine R. / Horseshoe Lake Minor Watershed (Minor #11052)

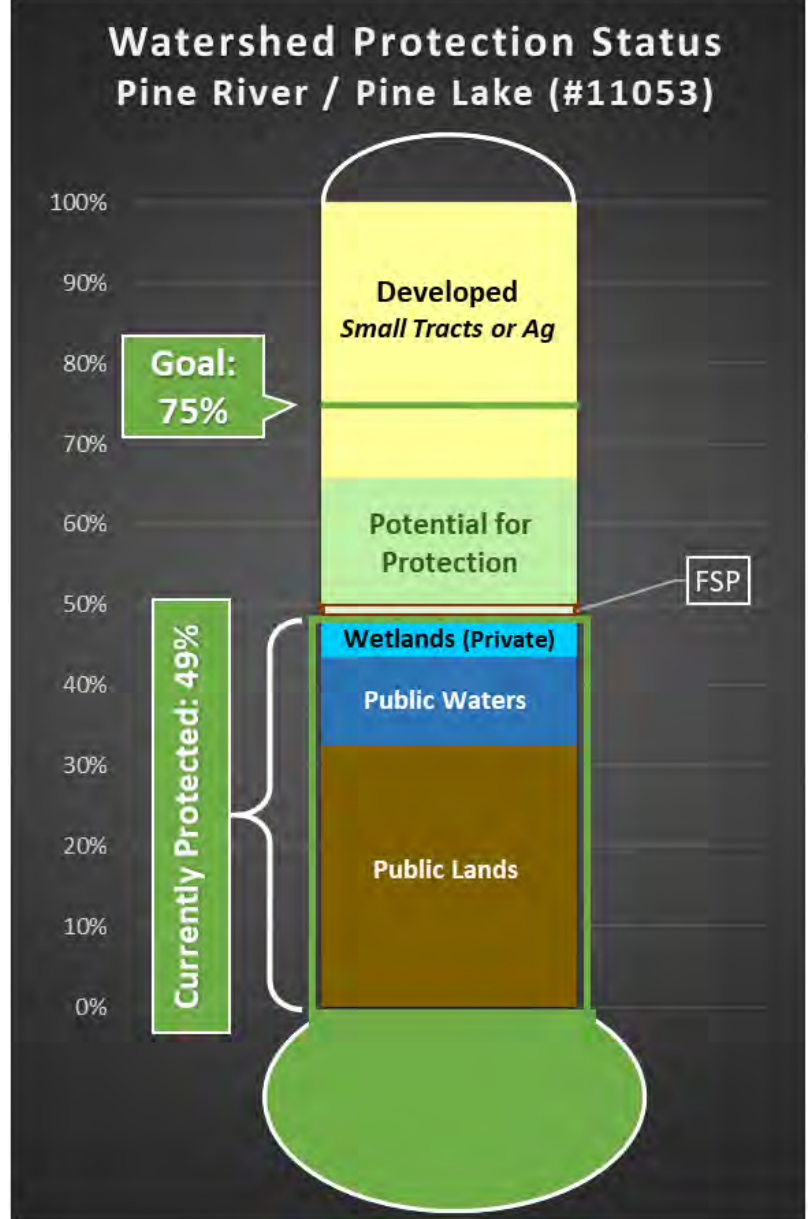
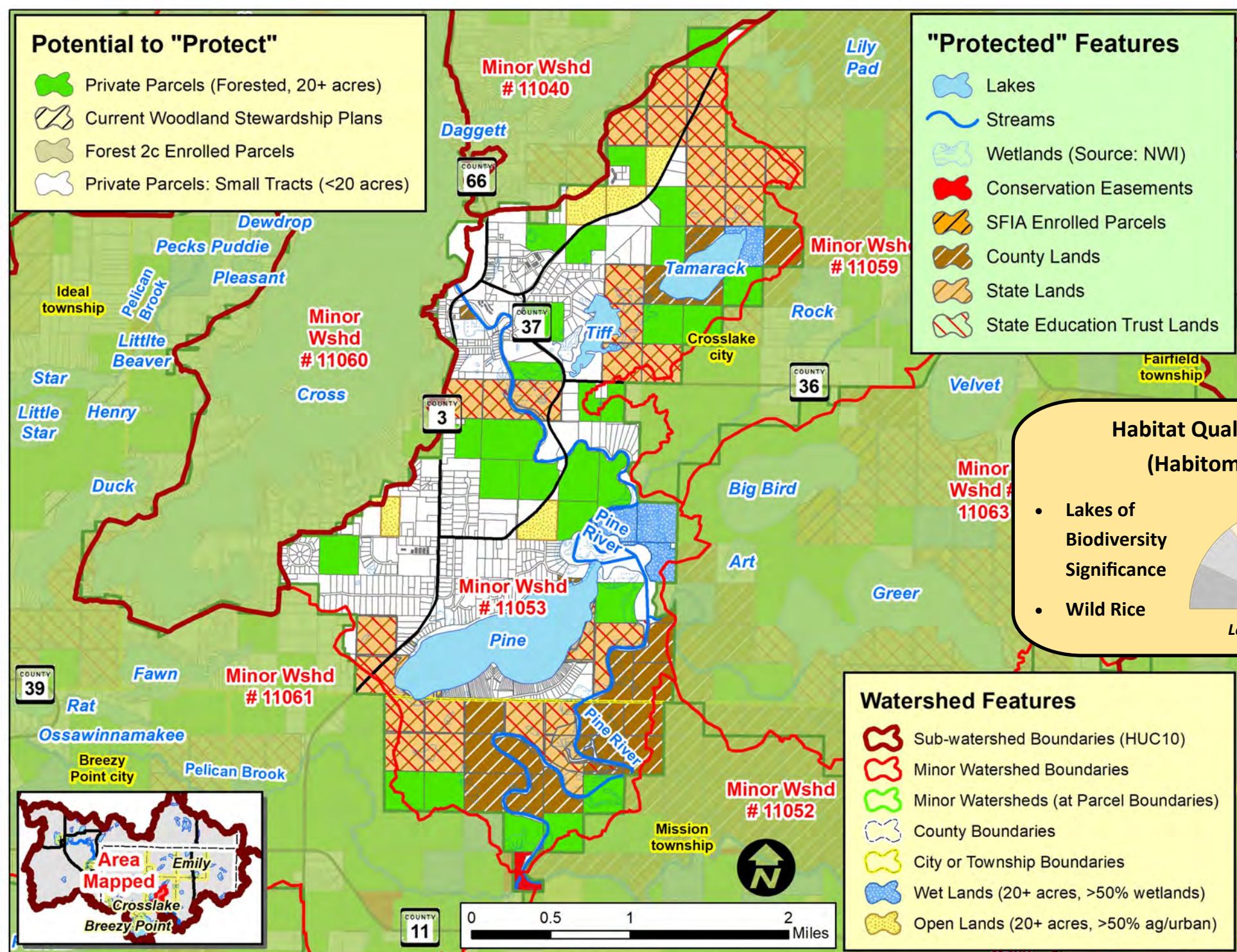


Scoring Criteria:		
Riparian	3	Riparian
	2	Non-riparian: Shoreland (1 parcel back)
	1	2 parcels back
Adjacency	3	2 sides touching public land
	2	1 side touching public land
	1	One parcel removed from public land or touching parcel with SFIA or Easement
Quality*	3	1 point for each feature that the parcel touches: such as High or Outstanding Biodiversity (upl. or aqu.), Wild Rice L, Cisco L, Trout L/Streams, etc.
	2	
	1	

* Quality is locally determined and can include other features, including groundwater resources. For this project, quality also included:

- Outstanding Resource Value Resources (MPCA)
- Old Growth Forests (DNR)
- Lakes with Exceptional IBI Scores (DNR)
- Drinking Water Supply Management Areas (MDH)
- High or Outstanding Wildlife Action Network Score (DNR)

What is the Potential to Protect the Pine R. / Pine L. Minor Watershed (Minor 11053)?

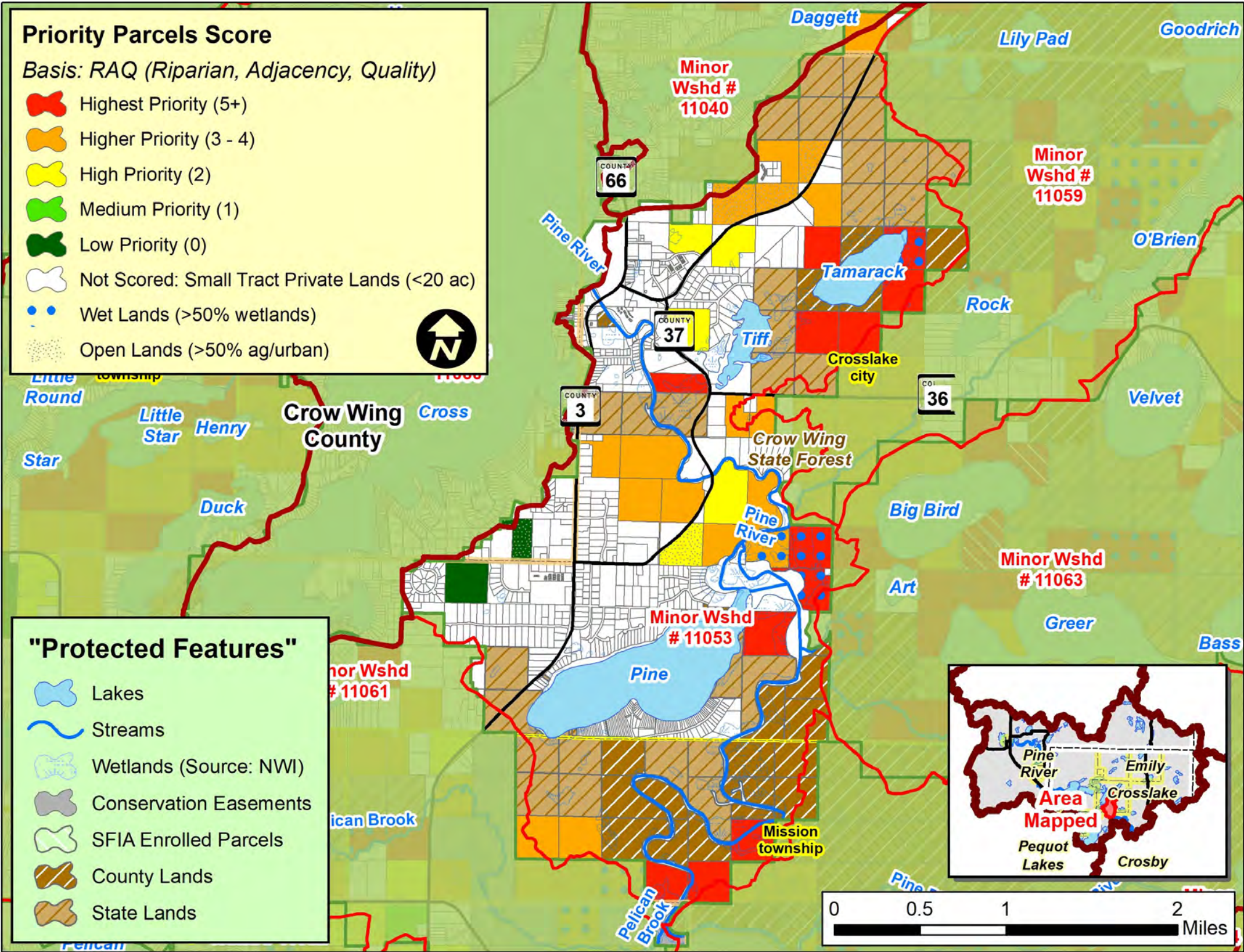


Implementation Toolbox

Plan It!	Improve It!	Manage It!	Buy It!
General Advice & Assistance <ul style="list-style-type: none">FactsheetsPoster / MailersWorkshopsWebsite / Social Media	Specific Advice & Assistance <ul style="list-style-type: none">Site VisitsPlans:<ul style="list-style-type: none">LandscapingStewardshipForest Stewardship Projects	Grants & Cost-share Projects <ul style="list-style-type: none">Tree PlantingBud CappingTimber Stand Improvement (Thinning) Forest Management <ul style="list-style-type: none">Timber SalesHigh Priority Areas: Clean Water/Habitat Fund	Local Land Use <ul style="list-style-type: none">Riparian BuffersVoluntary Site Level GuidelinesZoning & Official Controls Incentive Programs to Enroll Land <ul style="list-style-type: none">SFIA2C ForestCRP Conservation Easements <ul style="list-style-type: none">DonatedPurchased Fee Title Public Land Acquisition <ul style="list-style-type: none">FederalStateCounty

Options: Lower Costs, Less Permanent → Higher Costs, More Permanent

RAQ Scoring for Parcels in the Pine R. / Pine Lake Minor Watershed (Minor #11053)



Scoring Criteria:		
Riparian	3	Riparian
	2	Non-riparian: Shoreland (1 parcel back)
	1	2 parcels back
Adjacency	3	2 sides touching public land
	2	1 side touching public land
	1	One parcel removed from public land or touching parcel with SFIA or Easement
Quality*	3	1 point for each feature that the parcel touches: such as High or Outstanding Biodiversity (upl. or aqu.), Wild Rice L, Cisco L, Trout L/Streams, etc.
	2	
	1	

* Quality is locally determined and can include other features, including groundwater resources. For this project, quality also included:

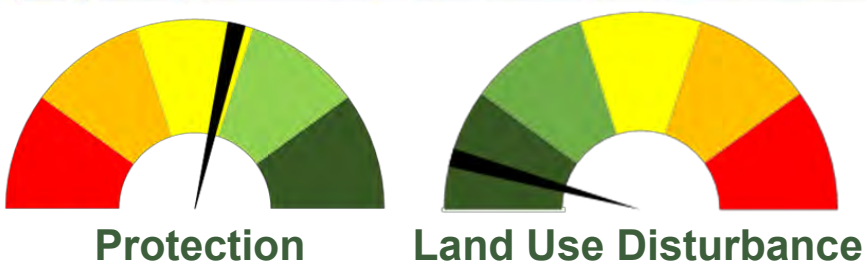
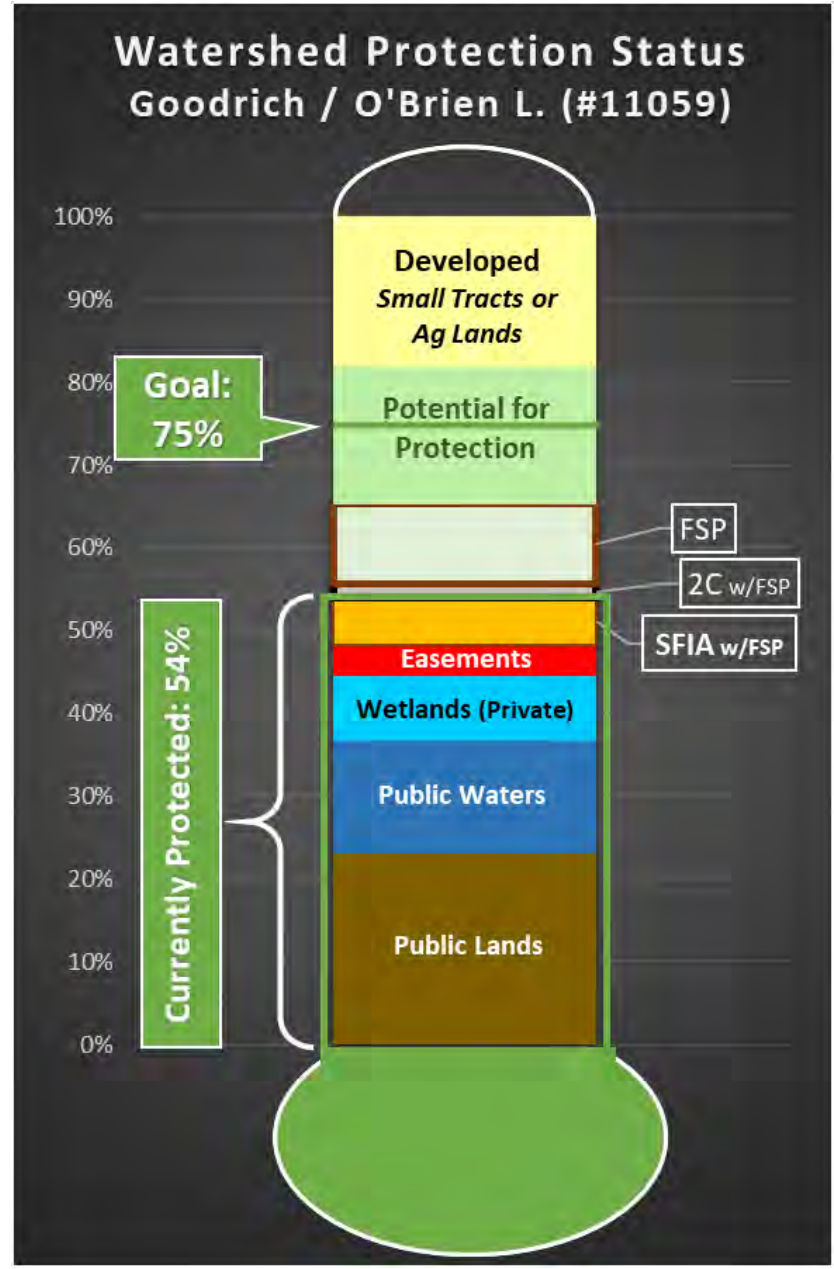
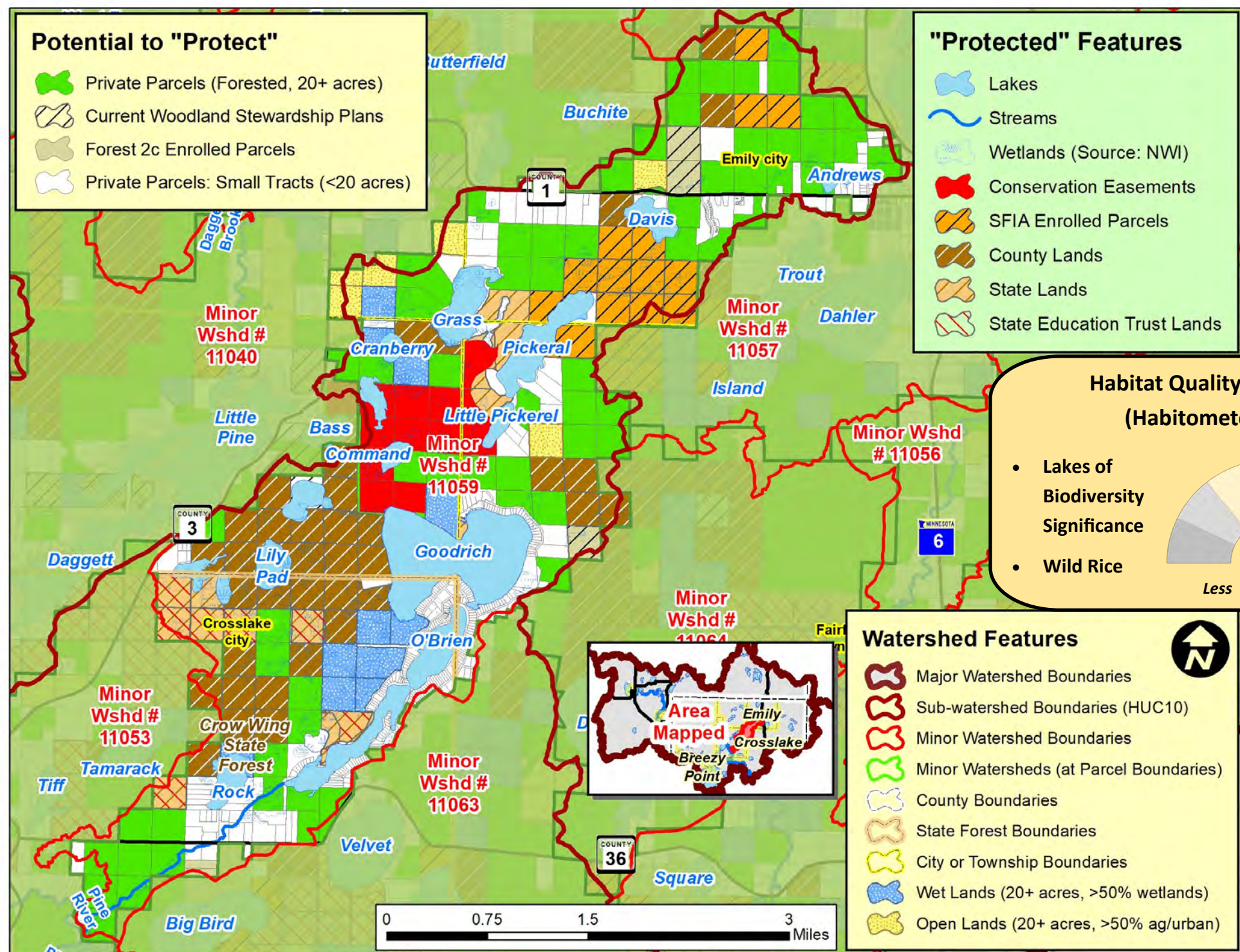
- Outstanding Resource Value Resources (MPCA)
- Old Growth Forests (DNR)
- Lakes with Exceptional IBI Scores (DNR)
- Drinking Water Supply Management Areas (MDH)
- High or Outstanding Wildlife Action Network Score (DNR)

Implementation Toolbox

Plan It!	Improve It!	Manage It!	Buy It!
General Advice & Assistance	Specific Advice & Assistance	Grants & Cost-share Projects	Local Land Use
Factsheets Poster / Mailers Workshops Website / Social Media	Site Visits Plans Landscape Stewardship Forest Stewardship Projects	Tree Planting Bud Capping Timber Stand Improvement (Thinning)	Timber Sales High Priority Areas Clean Water/Habitat Fund
		Riparian Buffers Voluntary Site Level Guidelines Zoning & Official Controls	Incentive Programs to Enroll Land
		SFIA 2C Forest CRP	Conservation Easements
		Donated Purchased	Fee Title Public Land Acquisition
			Federal State County

Options: Lower Costs, Less Permanent → Higher Costs, More Permanent

What is the Potential to Protect the Goodrich / O'Brien L. Minor Watershed (Minor 11059)?



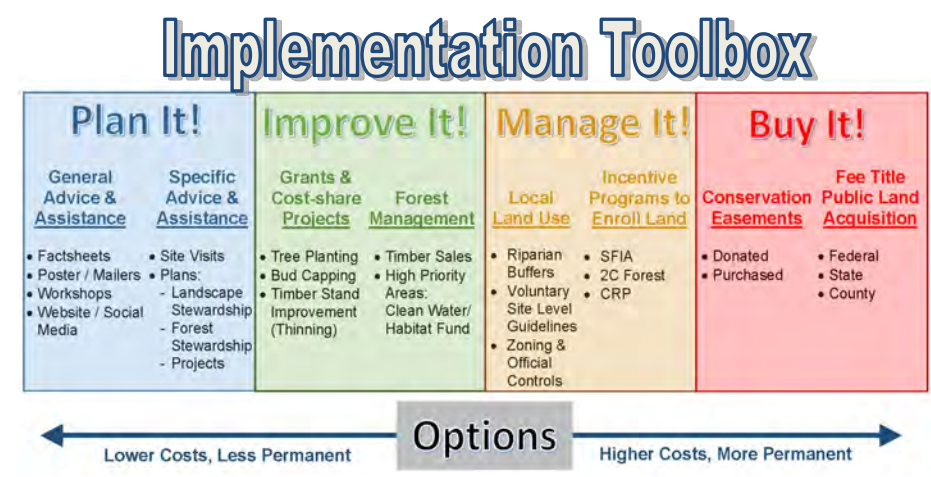
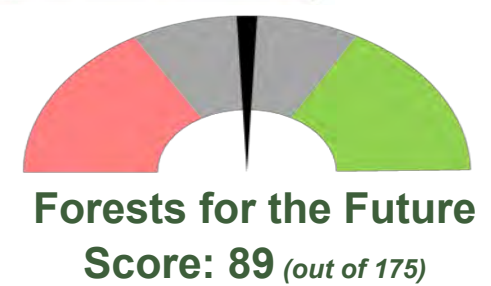
Water Quality Trends / Impairments:

Improving: Goodrich L., O'Brien L.

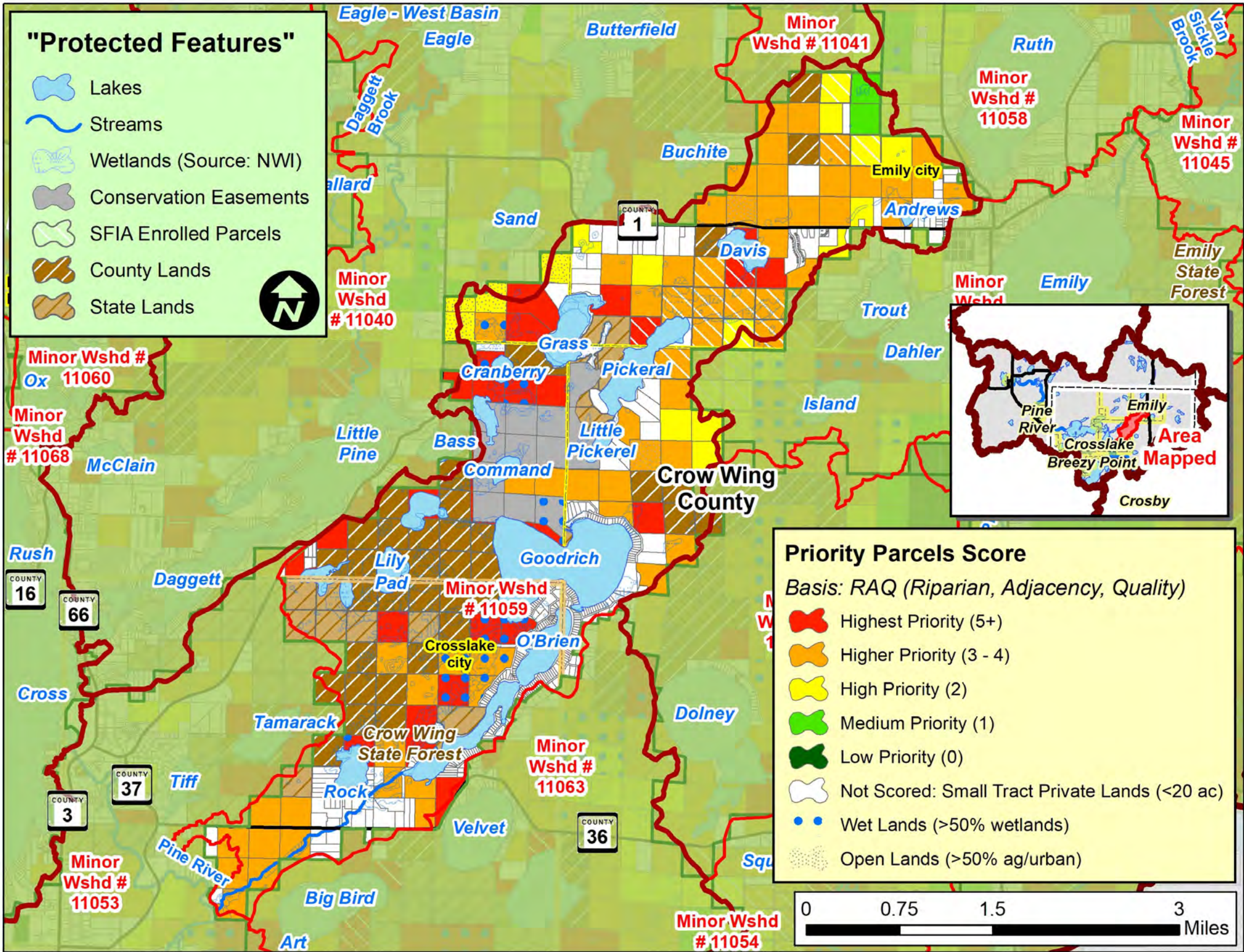
Declining: None

Impaired: None

Stable (No Trend): None



RAQ Scoring for Parcels in the Goodrich / O'Brien L. Minor Watershed (Minor #11059)



Scoring Criteria:		
<u>Riparian</u>	3	Riparian
	2	Non-riparian: Shoreland (1 parcel back)
	1	2 parcels back
<u>Adjacency</u>	3	2 sides touching public land
	2	1 side touching public land
	1	One parcel removed from public land or touching parcel with SFIA or Easement
<u>Quality*</u>	3	1 point for each feature that the parcel touches: such as High or Outstanding Biodiversity (upl. or aqu.), Wild Rice L, Cisco L, Trout L/Streams, etc.
	2	
	1	

* Quality is locally determined and can include other features, including groundwater resources. For this project, quality also included:

- Outstanding Resource Value Resources (MPCA)
- Old Growth Forests (DNR)
- Lakes with Exceptional IBI Scores (DNR)
- Drinking Water Supply Management Areas (MDH)
- High or Outstanding Wildlife Action Network Score (DNR)

Implementation Toolbox

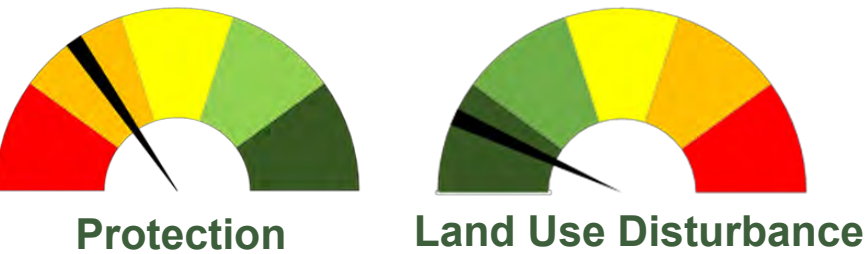
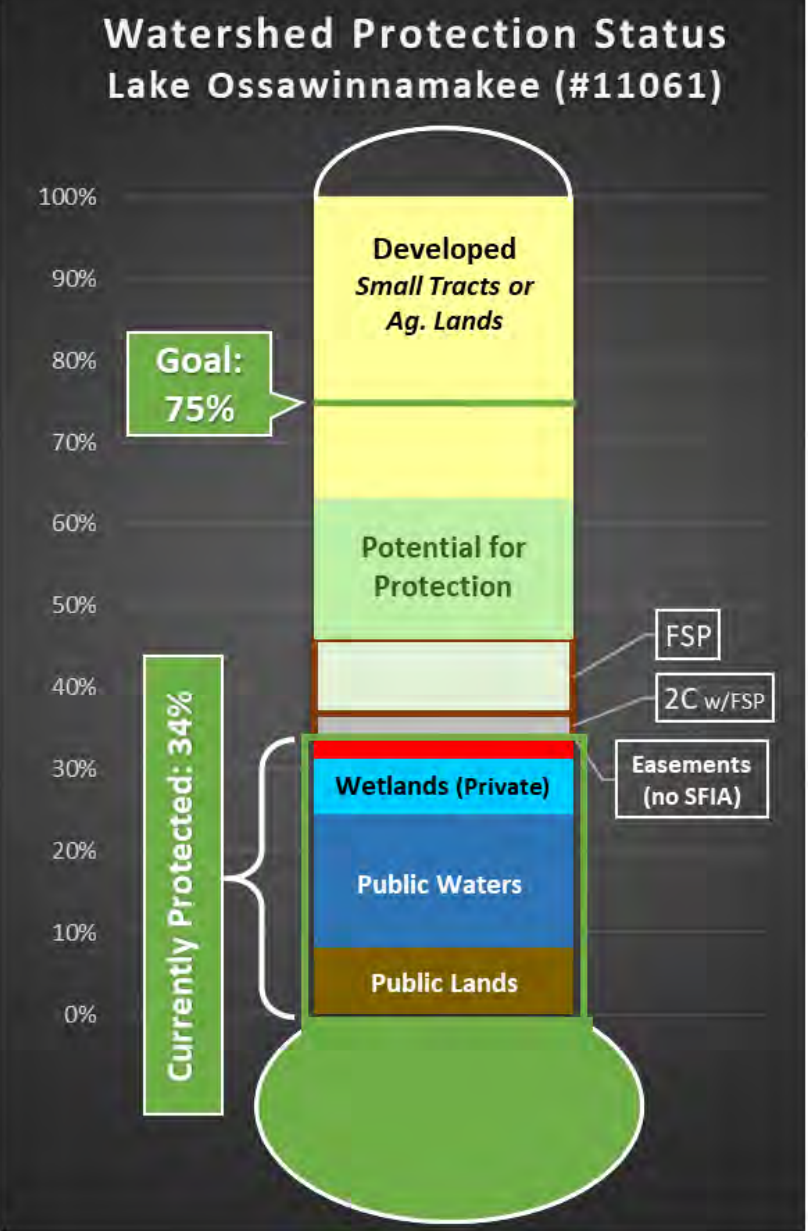
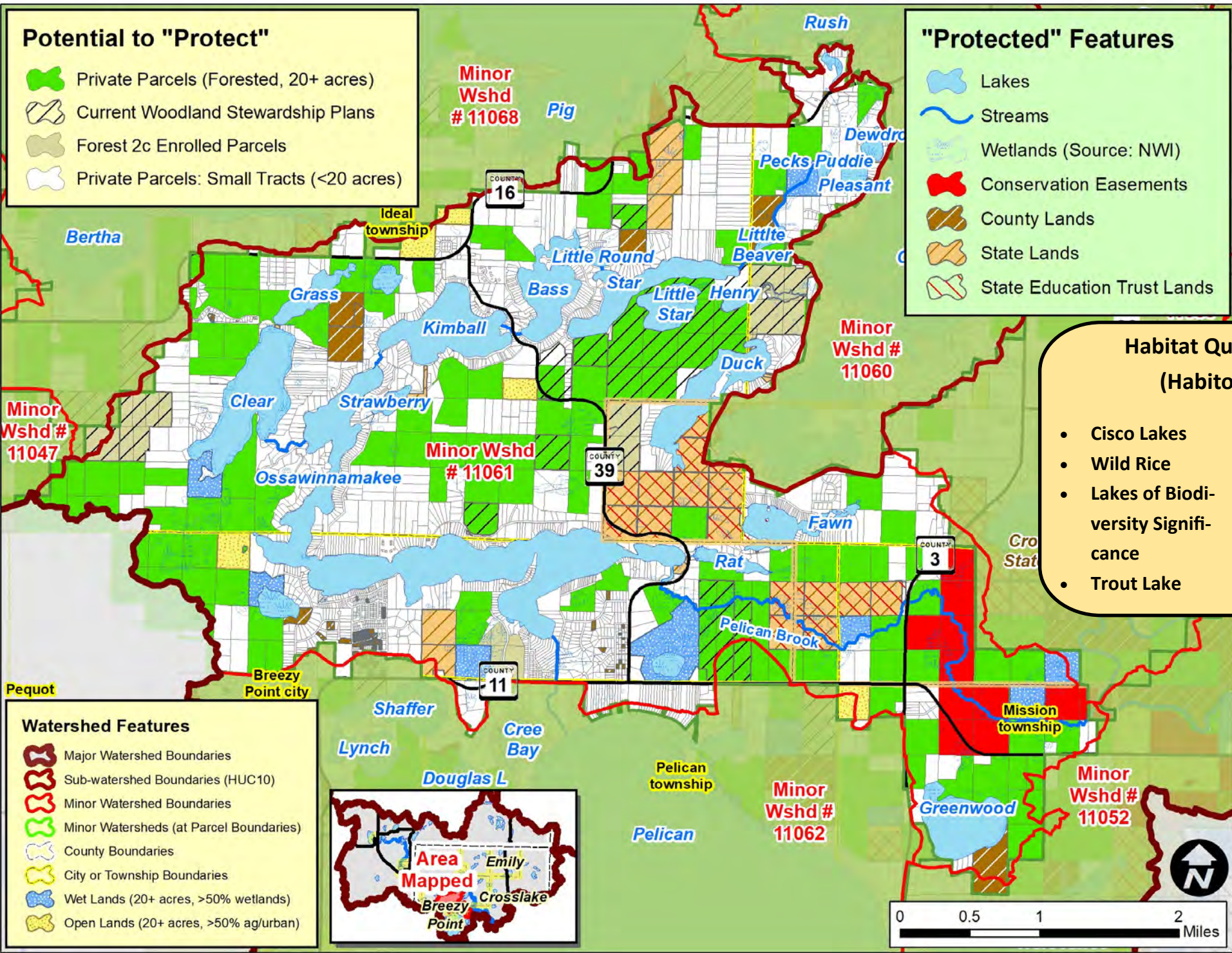
Plan It!		Improve It!		Manage It!		Buy It!	
General Advice & Assistance	Specific Advice & Assistance	Grants & Cost-share Projects	Forest Management	Local Land Use	Incentive Programs to Enroll Land	Conservation Easements	Fee Title Public Land Acquisition
<ul style="list-style-type: none"> • Factsheets • Poster / Mailers • Workshops • Website / Social Media 	<ul style="list-style-type: none"> • Site Visits • Plans - Landscape Stewardship - Forest Stewardship Projects 	<ul style="list-style-type: none"> • Tree Planting • Bud Capping • Timber Stand Improvement (Thinning) 	<ul style="list-style-type: none"> • Timber Sales • High Priority Areas • Clean Water/ Habitat Fund 	<ul style="list-style-type: none"> • Riparian Buffers • Voluntary Site Level Guidelines • Zoning & Official Controls 	<ul style="list-style-type: none"> • SFIA • 2C Forest • CRP 	<ul style="list-style-type: none"> • Donated • Purchased 	<ul style="list-style-type: none"> • Federal • State • County

Option

Lower Costs, Less Permanent

Higher Costs, More Permanent

What is the Potential to Protect the Lake Ossawinnamakee Minor Watershed (Minor 11061) ?

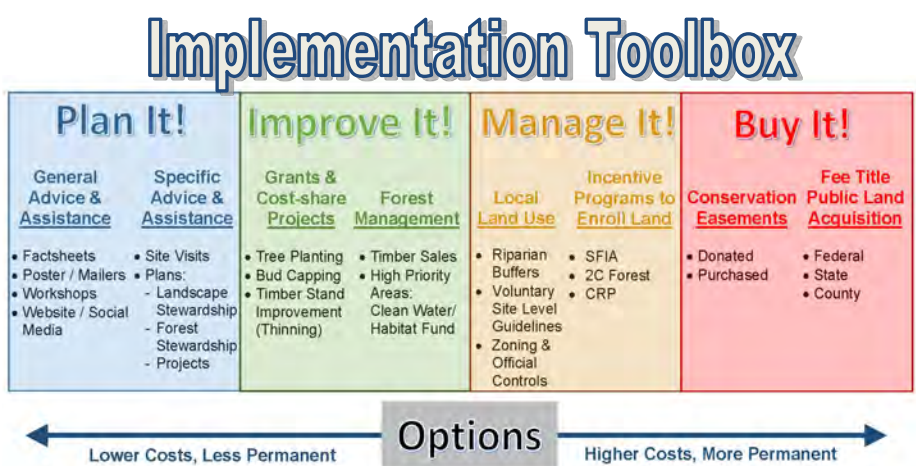
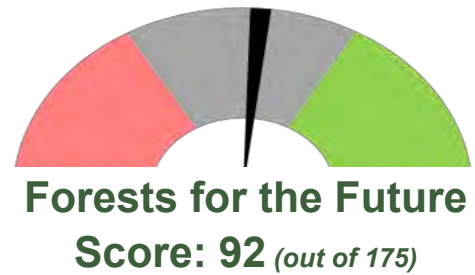


Water Quality Trends / Impairments:

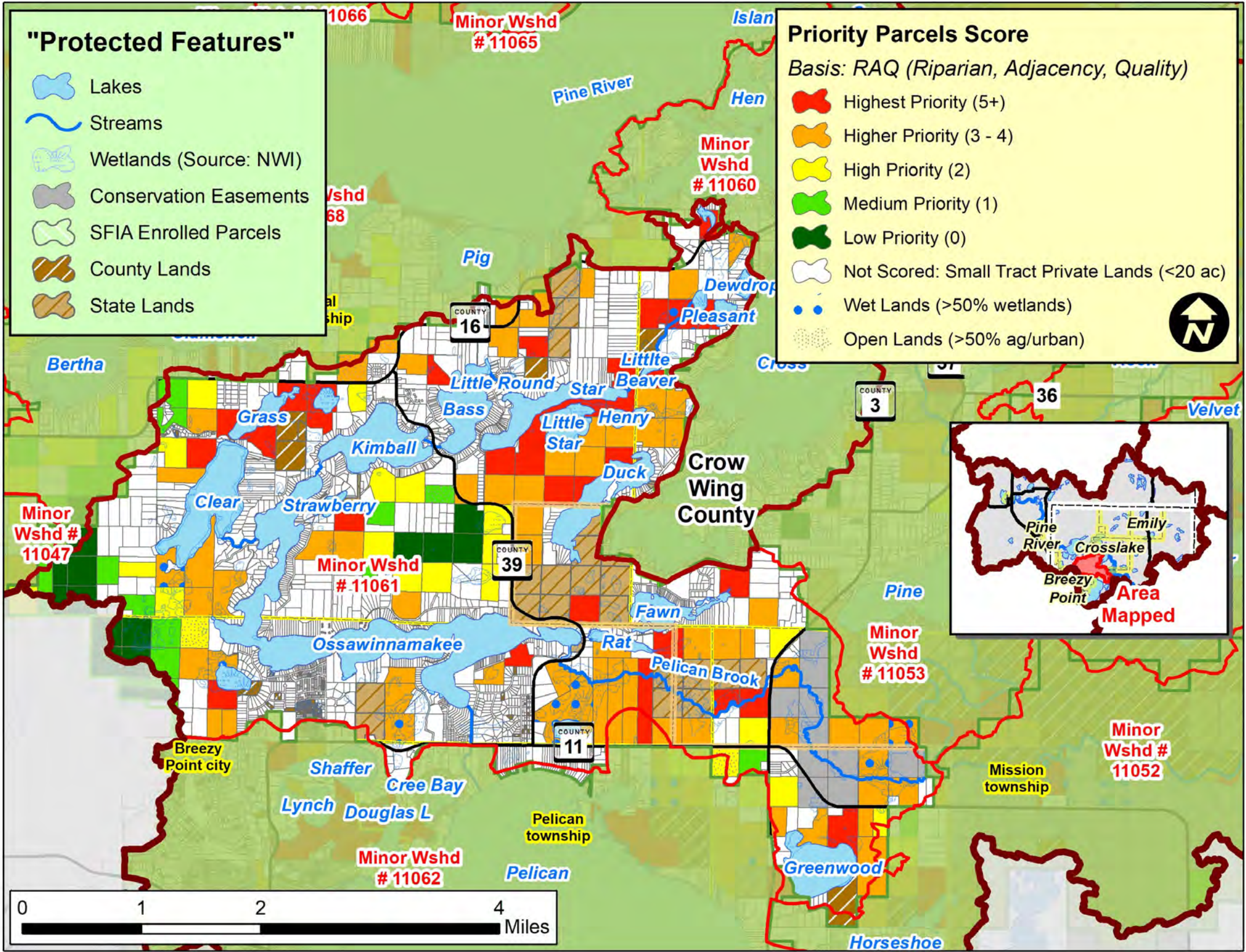
Improving: Clear, Ossi, Star, Little Star

Declining: None, Impaired: None

Stable (No Trend): Kimball, Bass



RAQ Scoring for Parcels in the Lake Ossawinnamakee Minor Watershed (Minor #11061)



Scoring Criteria:		
Riparian	3	Riparian
	2	Non-riparian: Shoreland (1 parcel back)
	1	2 parcels back
Adjacency	3	2 sides touching public land
	2	1 side touching public land
	1	One parcel removed from public land or touching parcel with SFIA or Easement
Quality*	3	1 point for each feature that the parcel touches: such as High or Outstanding Biodiversity (upl. or aqu.), Wild Rice L, Cisco L, Trout L/Streams, etc.
	2	
	1	

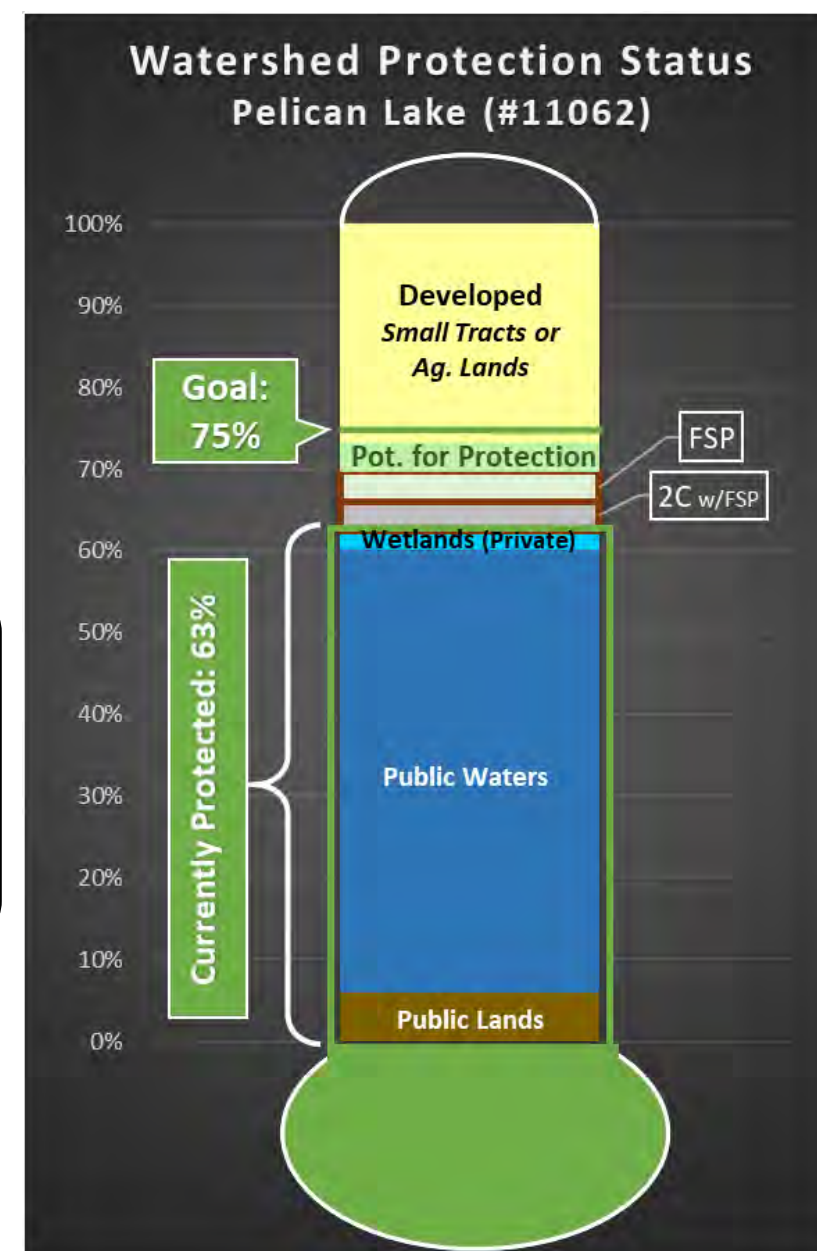
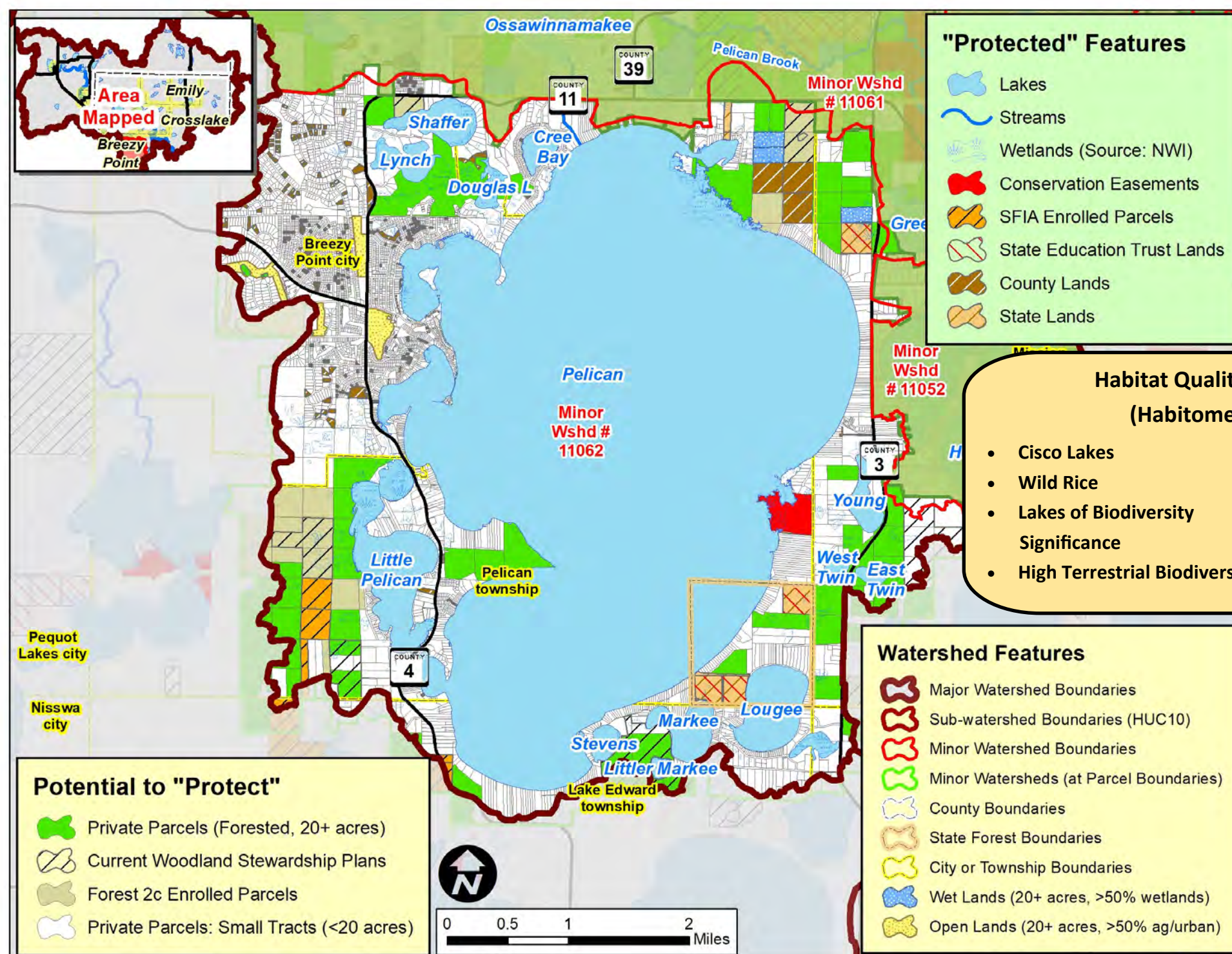
* Quality is locally determined and can include other features, including groundwater resources. For this project, quality also included:

- Outstanding Resource Value Resources (MPCA)
- Old Growth Forests (DNR)
- Lakes with Exceptional IBI Scores (DNR)
- Drinking Water Supply Management Areas (MDH)
- High or Outstanding Wildlife Action Network Score (DNR)

Implementation Toolbox

Plan It!	Improve It!	Manage It!	Buy It!
General Advice & Assistance • Factsheets • Poster / Mailers • Workshops • Website / Social Media	Specific Advice & Assistance • Site Visits • Plans • Landscape Stewardship • Forest Stewardship Projects	Grants & Cost-share Projects • Tree Planting • Bud Capping • Timber Stand Improvement • Forest Management • Timber Sales • High Priority Areas • Clean Water/Habitat Fund	Local Land Use • Riparian Buffers • Voluntary Site Level Guidelines • Zoning & Official Controls
	Incentive Programs to Enroll Land • SFIA • 2C Forest • CRP	Conservation Easements • Donated • Purchased	Fee Title Public Land Acquisition • Federal • State • County
Options			
Lower Costs, Less Permanent		Higher Costs, More Permanent	

What is the Potential to Protect the Pelican Lake Minor Watershed (Minor 11062) ?



Water Quality Trends / Impairments:

Improving: Pelican, L. Pelican, Lougee, Markee, Horseshoe (East Bay)

Declining: None, **Impaired:** None

Stable (No Trend): Young, Horseshoe (W)



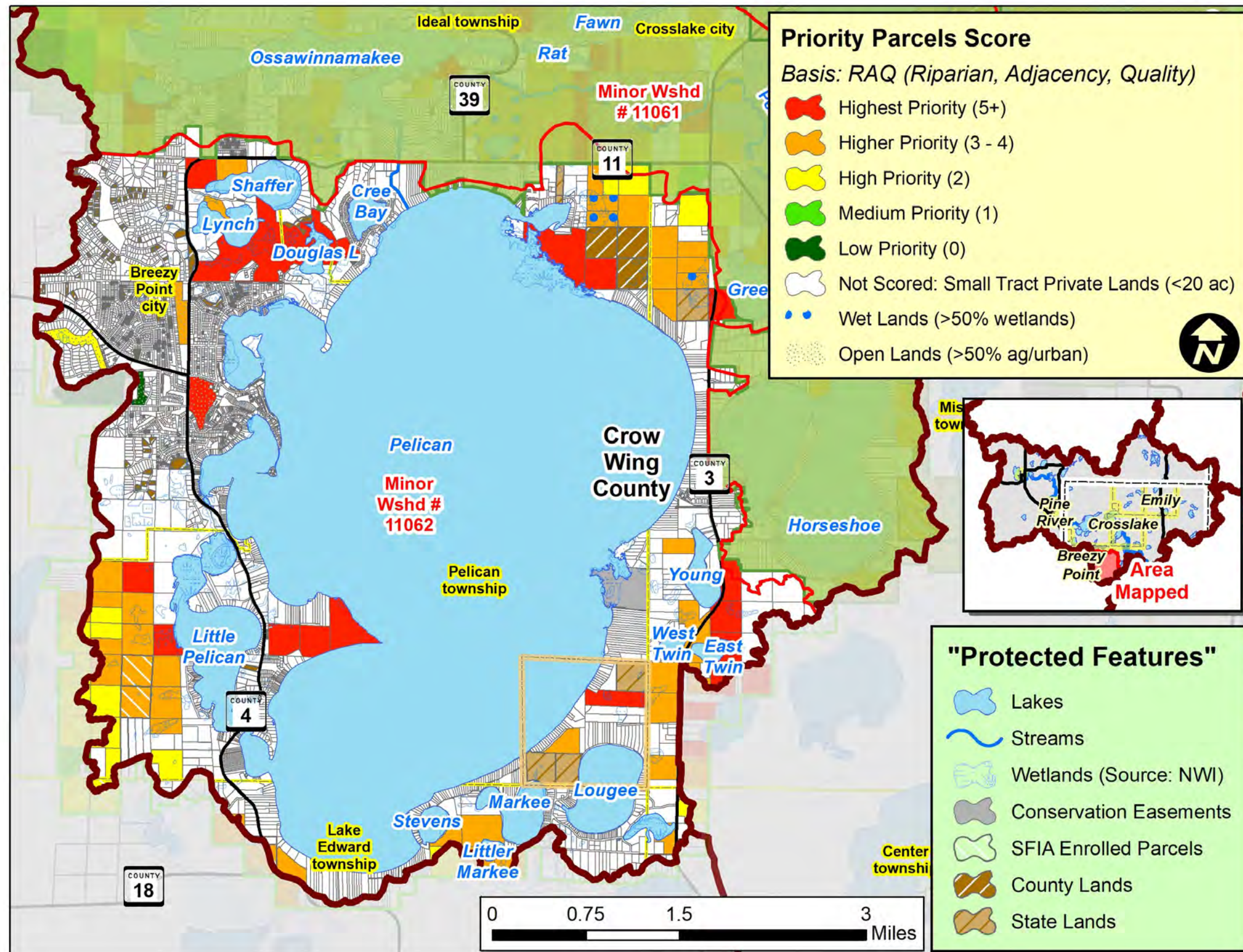
Implementation Toolbox

Plan It!	Improve It!	Manage It!	Buy It!
General Advice & Assistance <ul style="list-style-type: none"> Factsheets Poster / Mailers Workshops Website / Social Media 	Specific Advice & Assistance <ul style="list-style-type: none"> Site Visits Plans: <ul style="list-style-type: none"> Landscaping Forest Stewardship Forest Stewardship - Projects 	Grants & Cost-share Projects <ul style="list-style-type: none"> Tree Planting Bud Capping Timber Stand Improvement (Thinning) Forest Management <ul style="list-style-type: none"> Timber Sales High Priority Areas: <ul style="list-style-type: none"> Clean Water/Habitat Fund 	Local Land Use <ul style="list-style-type: none"> Riparian Buffers Voluntary Site Level Guidelines Zoning & Official Controls Incentive Programs to Enroll Land <ul style="list-style-type: none"> SFIA 2C Forest CRP
			Conservation Easements <ul style="list-style-type: none"> Donated Purchased Fee Title Public Land Acquisition <ul style="list-style-type: none"> Federal State County

Options

Lower Costs, Less Permanent → Higher Costs, More Permanent

RAQ Scoring for Parcels in the Pelican Lake Minor Watershed (Minor #11062)



Scoring Criteria:		
Riparian	3	Riparian
	2	Non-riparian: Shoreland (1 parcel back)
	1	2 parcels back
Adjacency	3	2 sides touching public land
	2	1 side touching public land
	1	One parcel removed from public land or touching parcel with SFIA or Easement
Quality*	3	1 point for each feature that the parcel touches: such as High or Outstanding Biodiversity (upl. or aqu.), Wild Rice L, Cisco L, Trout L/Streams, etc.
	2	
	1	

* Quality is locally determined and can include other features, including groundwater resources. For this project, quality also included:

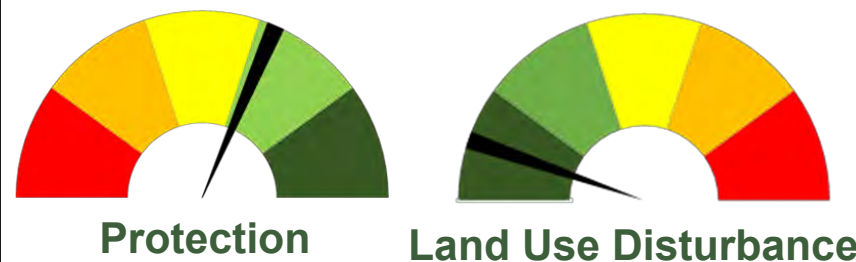
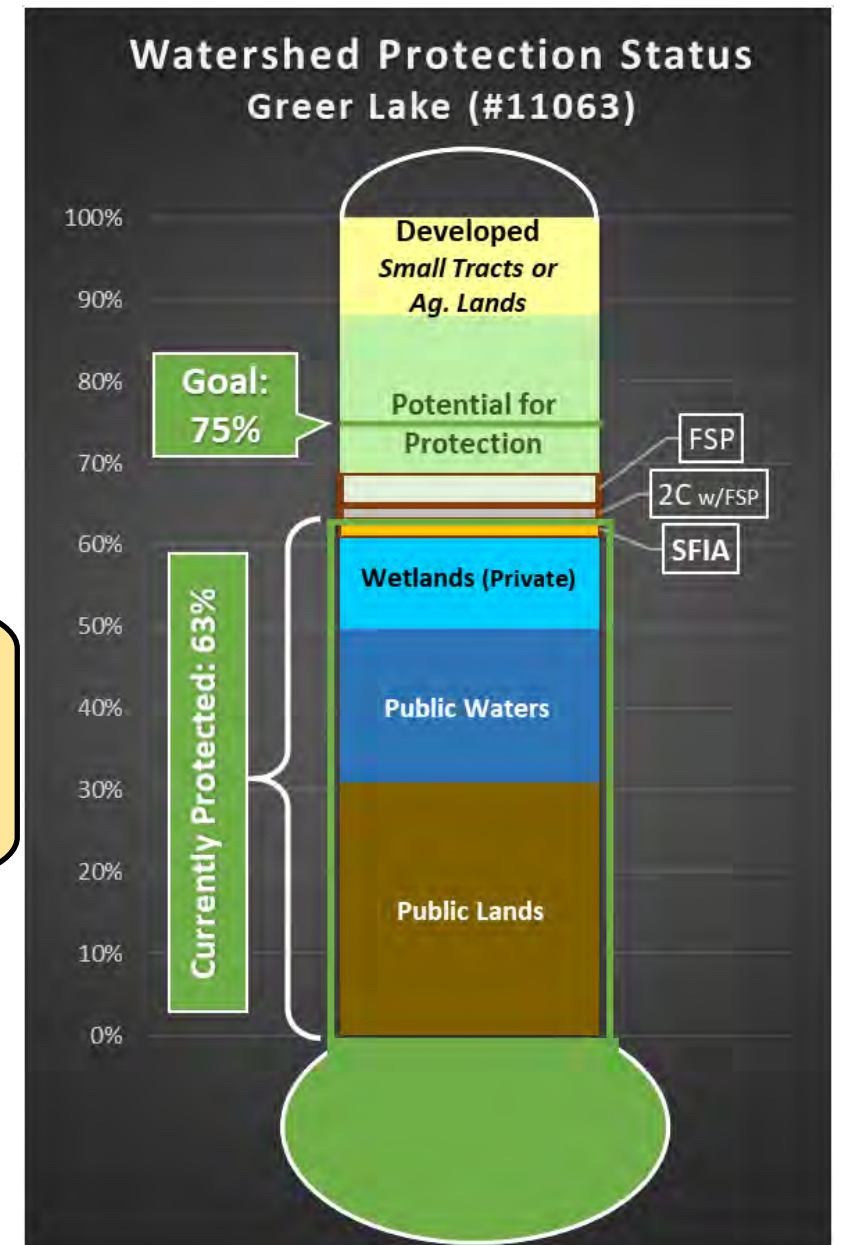
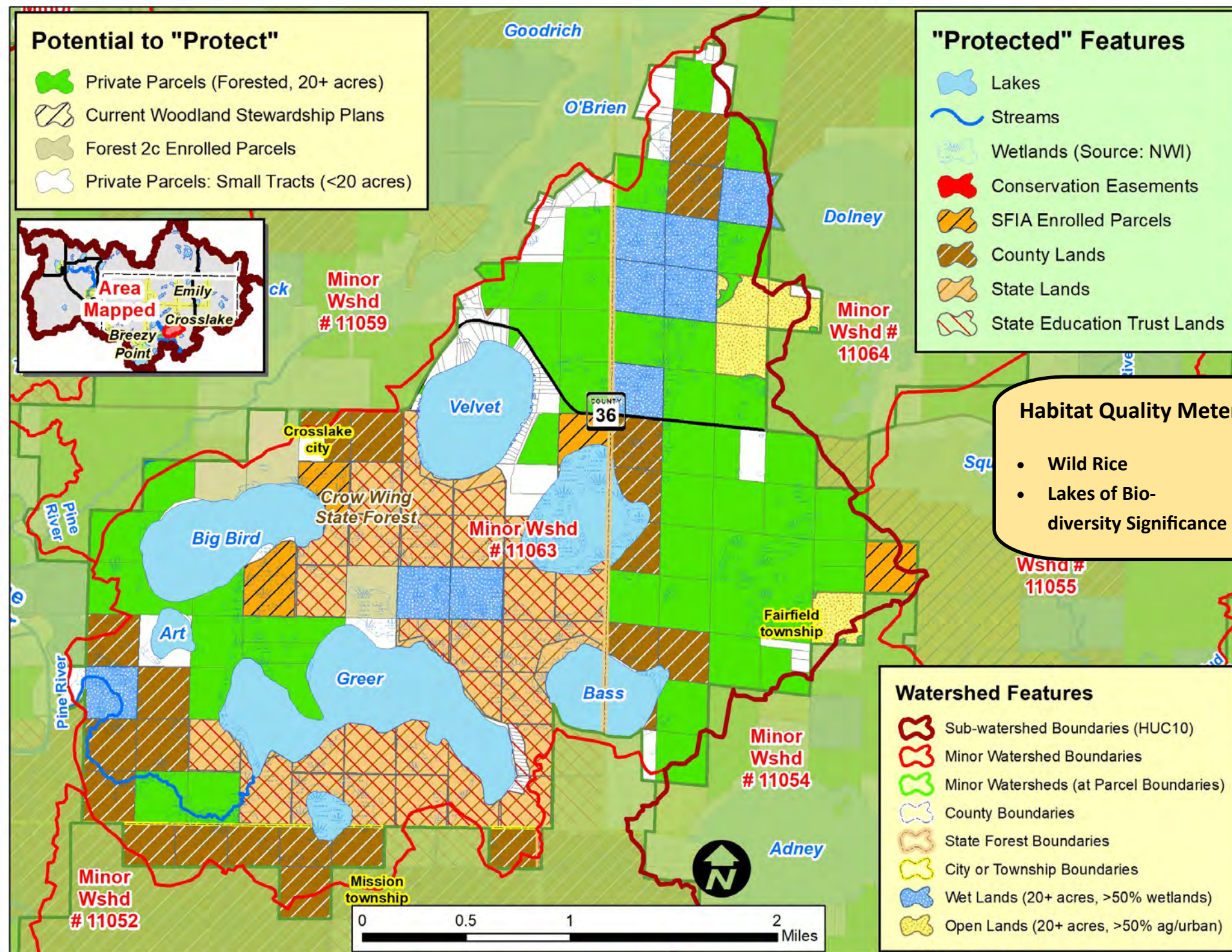
- Outstanding Resource Value Resources (MPCA)
- Old Growth Forests (DNR)
- Lakes with Exceptional IBI Scores (DNR)
- Drinking Water Supply Management Areas (MDH)
- High or Outstanding Wildlife Action Network Score (DNR)

Implementation Toolbox

Plan It!	Improve It!	Manage It!	Buy It!
General Advice & Assistance <ul style="list-style-type: none"> Factsheets Poster / Mailers Workshops Website / Social Media 	Specific Advice & Assistance <ul style="list-style-type: none"> Site Visits Plans Landscaping Stewardship Forest Stewardship Projects 	Grants & Cost-share Projects <ul style="list-style-type: none"> Tree Planting Bud Capping Timber Stand Improvement Forest Thinning Forest Management <ul style="list-style-type: none"> Timber Sales High Priority Areas Clean Water/Habitat Fund 	Local Land Use <ul style="list-style-type: none"> Riparian Buffers Voluntary Site Level Guidelines Zoning & Official Controls Incentive Programs to Enroll Land <ul style="list-style-type: none"> SFIA 2C Forest CRP
			Conservation Easements <ul style="list-style-type: none"> Donated Purchased Fee Title Public Land Acquisition <ul style="list-style-type: none"> Federal State County

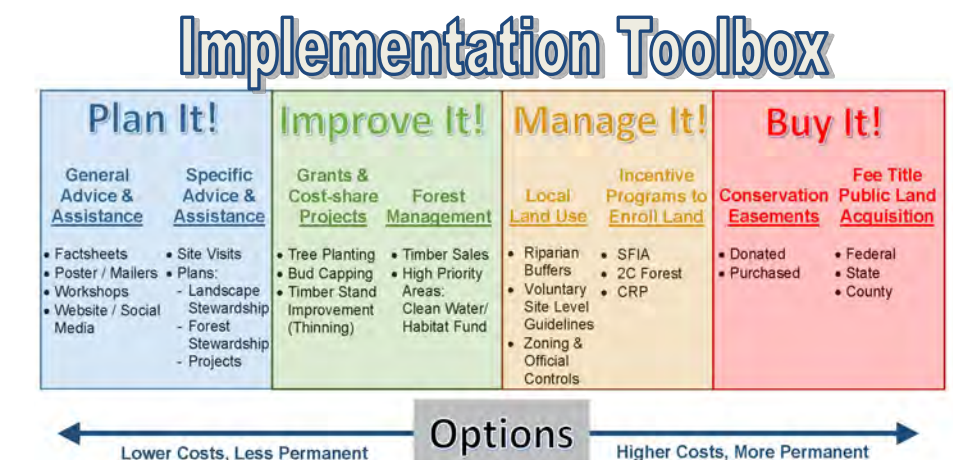
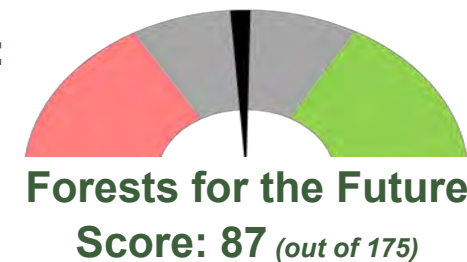
Options: Lower Costs, Less Permanent → Higher Costs, More Permanent

What is the Potential to Protect the Greer Lake Minor Watershed (Minor 11063)?

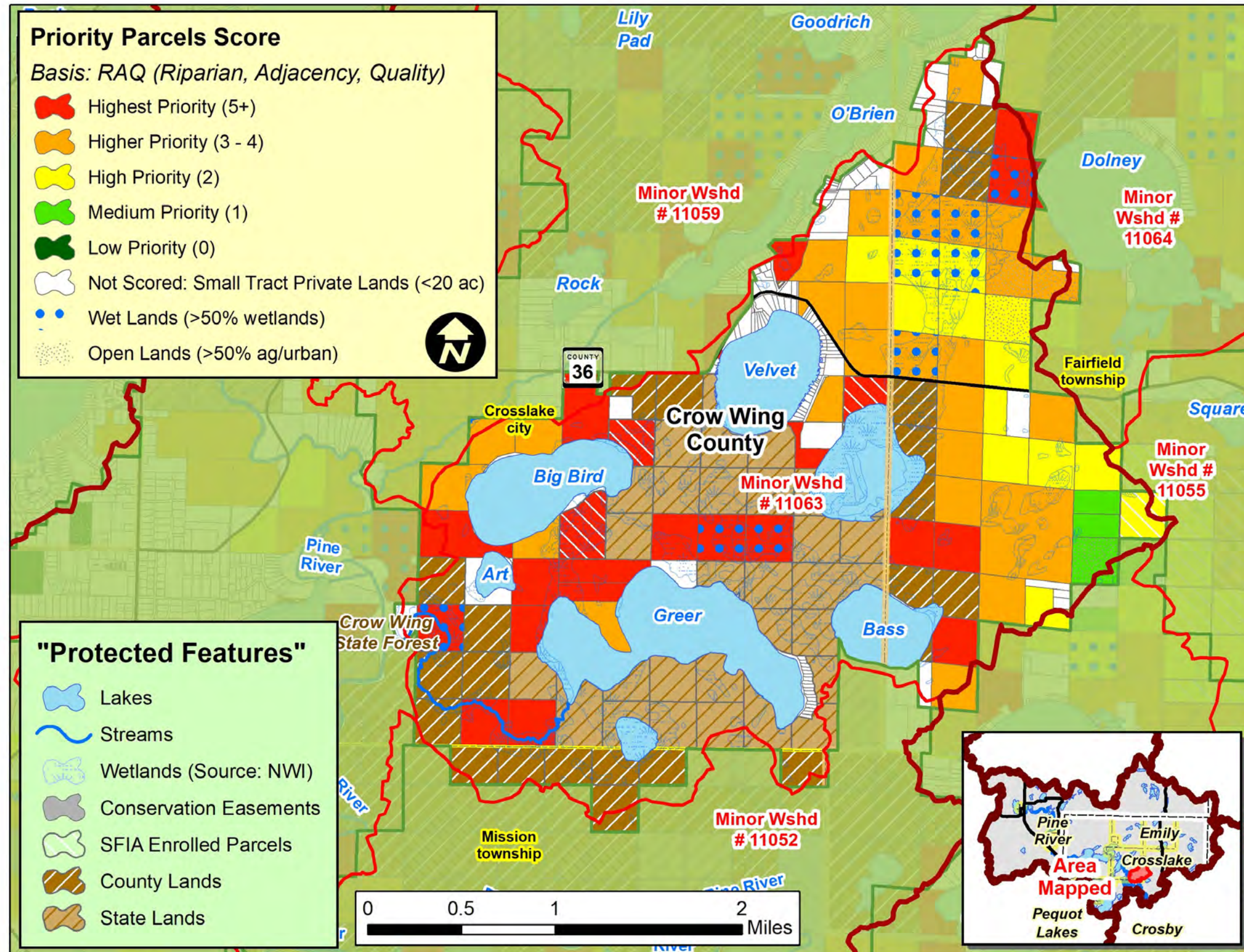


Water Quality Trends / Impairments:

Improving: None
Declining: None, **Impaired:** None
Stable (No Trend): Velvet Lake



RAQ Scoring for Parcels in the Greer Lake Minor Watershed (Minor #11063)



Scoring Criteria:		
Riparian	3	Riparian
	2	Non-riparian: Shoreland (1 parcel back)
	1	2 parcels back
Adjacency	3	2 sides touching public land
	2	1 side touching public land
	1	One parcel removed from public land or touching parcel with SFIA or Easement
Quality*	3	1 point for each feature that the parcel touches: such as High or Outstanding Biodiversity (upl. or aqu.), Wild Rice L, Cisco L, Trout L/Streams, etc.
	2	
	1	

* Quality is locally determined and can include other features, including groundwater resources. For this project, quality also included:

- Outstanding Resource Value Resources (MPCA)
- Old Growth Forests (DNR)
- Lakes with Exceptional IBI Scores (DNR)
- Drinking Water Supply Management Areas (MDH)
- High or Outstanding Wildlife Action Network Score (DNR)

Implementation Toolbox

Plan It!	Improve It!	Manage It!	Buy It!
General Advice & Assistance <ul style="list-style-type: none"> Factsheets Poster / Mailers Workshops Website / Social Media 	Specific Advice & Assistance <ul style="list-style-type: none"> Site Visits Plans Landscaping Stewardship Forest Stewardship Projects 	Grants & Cost-share Projects <ul style="list-style-type: none"> Tree Planting Bud Capping Timber Stand Improvement (Thinning) Forest Management <ul style="list-style-type: none"> Timber Sales High Priority Areas Clean Water/Habitat Fund 	Local Land Use <ul style="list-style-type: none"> Riparian Buffers Voluntary Site Level Guidelines Zoning & Official Controls Incentive Programs to Enroll Land <ul style="list-style-type: none"> SFIA 2C Forest CRP
Conservation Easements <ul style="list-style-type: none"> Donated Purchased 	Public Land Acquisition <ul style="list-style-type: none"> Federal State County 	Options <p>Lower Costs, Less Permanent → Higher Costs, More Permanent</p>	