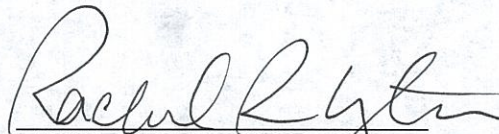


**Buckskin County Forest Road # 3, Crow Wing County, Minnesota**

PARCEL #	RE_CODE	SECTION	TOWNSHIP	RANGE	FEENAME	LEGAL DESCRIPTION
PARCEL 1	120043400B00009	4	137	27	PETERSON BRANDON JOSHUA	W. 1/2 OF SE1/4 OF SW1/4 <i>a</i>
PARCEL 2	120043100000009	4	137	27	TAX FORFEITED	NE1/4 OF SW1/4 <i>a</i>
PARCEL 3	120044200000009	4	137	27	TAX FORFEITED	NW1/4 OF SE1/4 <i>a</i>
PARCEL 4	120044100000009	4	137	27	TAX FORFEITED	NE1/4 OF SE1/4 <i>a</i>
PARCEL 5	120041400000009	3	137	27	TAX FORFEITED	SE1/4 OF NE1/4 <i>a</i>
PARCEL 6	120032300000009	3	137	27	TAX FORFEITED	SW1/4 OF NW1/4 <i>a</i>
PARCEL 7	120032400000009	3	137	27	TAX FORFEITED	SE1/4 OF NW1/4 <i>a</i>
PARCEL 8	120032100000009	3	137	27	TAX FORFEITED	NE1/4 OF NW1/4 <i>a</i>
PARCEL 9	120031200000009	3	137	27	TAX FORFEITED	NW1/4 OF NE1/4 <i>a</i>
PARCEL 11	220343100000009	34	138	27	TAX FORFEITED	NE1/4 OF SW1/4 <i>a</i>
PARCEL 12	220344300000009	34	138	27	TAX FORFEITED	SW1/4 OF SE1/4 <i>a</i>

May 7, 2008

DATE OF PUBLIC HEARING

  
 RACHEL REABE NYSTROM, CHAIR  
 BOARD OF COUNTY COMMISSIONERS  
 CROW WING COUNTY, MINNESOTA

COUNTY RECORDING SPACE BELOW

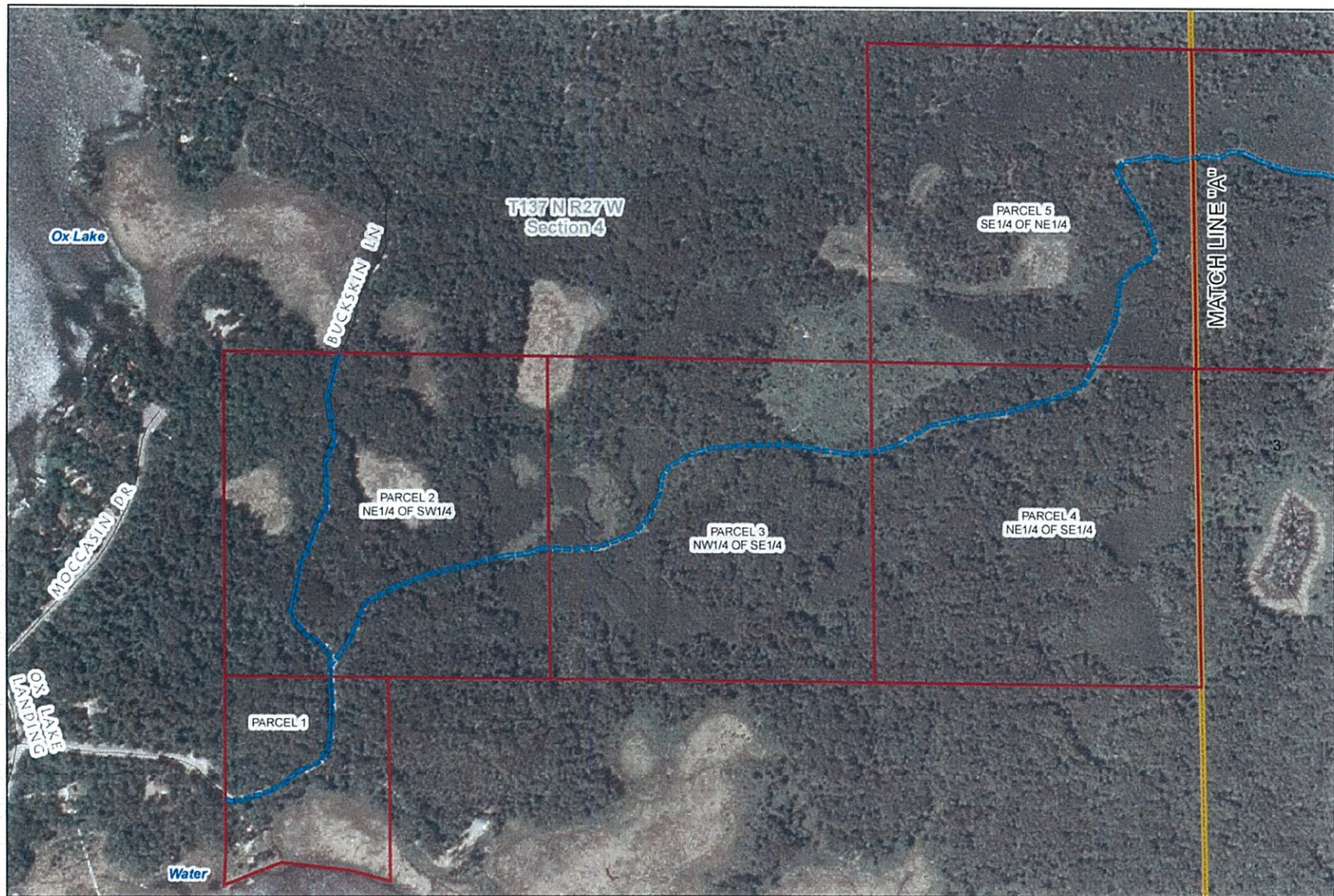
ATTEST:

  
 TIMOTHY J. HOULE, COUNTY ADMINISTRATOR  
 CROW WING COUNTY, MINNESOTA

Adopted at Brainerd, Minnesota, this *20<sup>th</sup>* day of *August*, 2008



# Buckskin County Forest Road #3, Crow Wing County , Minnesota



1 inch equals 567 feet

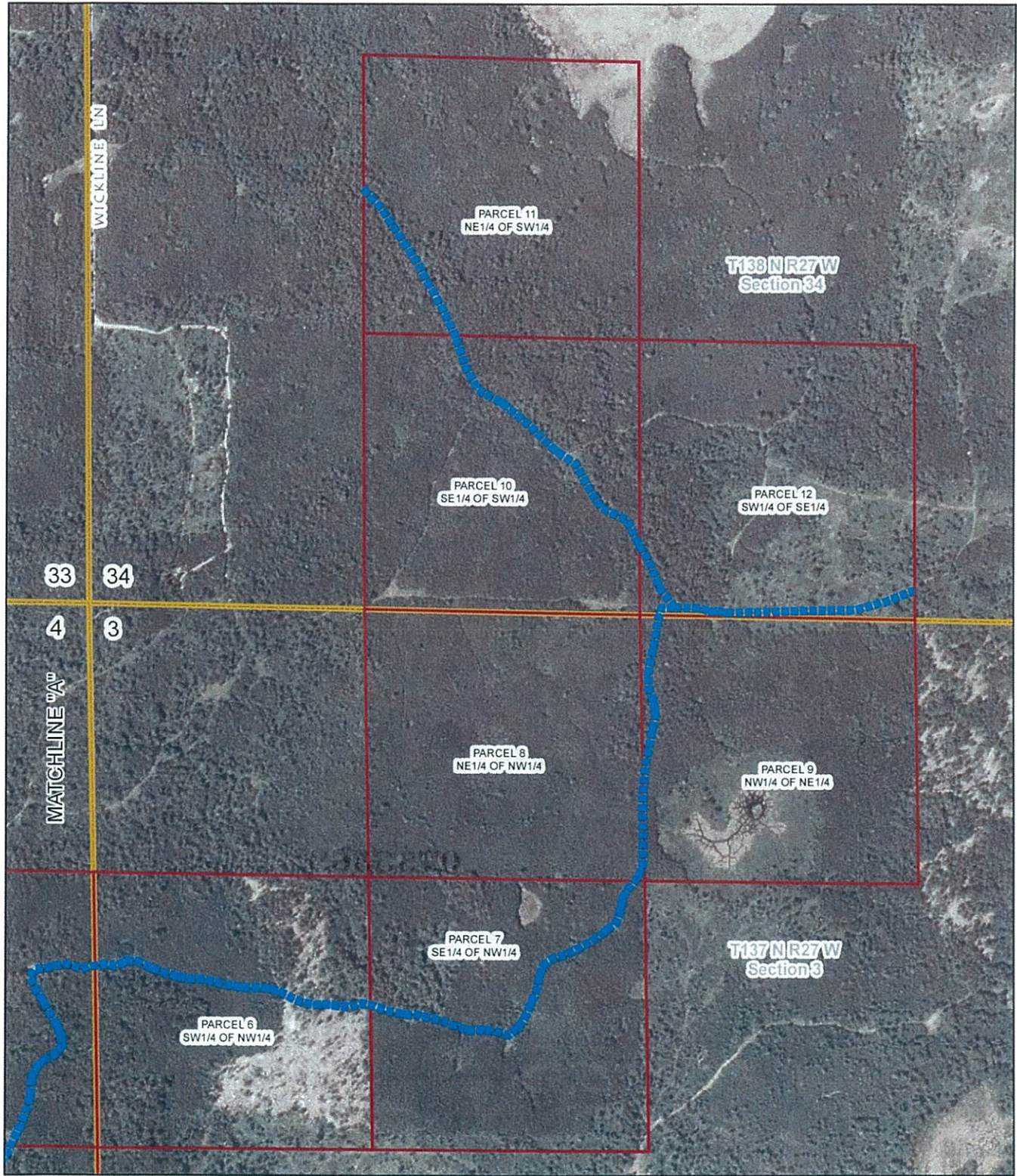
0 0.05 0.1 0.2 0.3 0.4 Miles

MS 89.715 states "the roads to be recorded will be to the width of the actual use including ditches, backslopes, fills, and maintained rights-of-ways". County Forest Roads are variable in width and the map symbol representing the County Forest Roads is intended to represent the location of those County Forest Roads, not the actual width.

■■■■■ Buckskin County Forest Rd

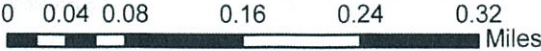


# Buckskin County Forest Road #3, Crow Wing County , Minnesota



1 inch equals 635 feet

Created 9/12/2007  
Updated 7/17/2008



MS 89.715 states "the roads to be recorded will be to the width of the actual use including ditches, backslopes, fills, and maintained rights-of-ways". County Forest Roads are variable in width and the map symbol representing the County Forest Roads is intended to represent the location of those County Forest Roads, not the actual width.

----- Buckskin County Forest Rd



N/e Co. wk.

Office of County Recorder }  
County of Crow Wing, MN }

I hereby certify that the within instrument was filed  
in this office for record on the 12 day of Sept  
A.D. 2008 at 8:30 o'clock 2 M.  
and was duly recorded as Doc. No. **0753369**

[Signature] County Recorder  
By Geraldine M. Mural Deputy